

This guide will help you start using Policy Patrol Archiver as quickly as possible. For more detailed instructions, consult the Policy Patrol manual.

Step 1. Prepare for installation

System requirements

Before installing Policy Patrol, check whether you meet the system requirements:

Policy Patrol Email (32-bit version):

- Windows Server 2003 or Windows 2000 Server/Advanced Server (or Windows XP Professional, Windows 2000 Professional or Windows Vista (apart from the Home edition) for installation on a separate machine)
- Exchange 2003, Exchange 2000, Exchange 5.5 (or Windows Small Business Server), Lotus Domino R5/R6/R7 or other mail server.
- Microsoft .NET Framework 2.0 (If you do not have this installed the Policy Patrol installation program will install it for you)

Policy Patrol Email for Exchange 2007 (64-bit version):

- Windows Server 2003 or Windows Server 2008 (64-bit).
- Microsoft Exchange Server 2007 (or Windows Small Business Server 2008)
- Microsoft .NET Framework 2.0 (If you do not have this installed the Policy Patrol installation program will install it for you)

Do I need the 32-bit version or the 64-bit version?

- If you do not have Exchange 2007, you need the 32-bit version.
- If you are installing Policy Patrol on Exchange 2007, you need the 64-bit version.
- If you have Exchange 2007 but are installing Policy Patrol on a separate machine, you need the 32-bit version.

⇒ If you have **Exchange 2007**, you must install Policy Patrol for Exchange 2007 (64 bit). Policy Patrol for Exchange 2007 can be installed on the following roles (there is no difference in functionality for either role):

- Edge Transport Role
- Hub Transport Role

If you are not installing Policy Patrol on the same machine as Exchange 2007, you must download the 32-bit version and follow the instructions for installing Policy Patrol on a separate machine:



[Installing Policy Patrol on a separate machine](http://www.policypatrol.com/docs/PP5-SeparateMachine.pdf)

(<http://www.policypatrol.com/docs/PP5-SeparateMachine.pdf>)

⇒ If you have **Exchange 2000/Exchange 2003** you can install Policy Patrol on the Exchange server machine (recommended) or on a separate machine. If you are installing Policy Patrol on the same machine as Exchange, skip this section and proceed to 'Step 2. Install Policy Patrol'. If you install Policy Patrol on a non-Exchange Server machine, Policy Patrol will not process internal mails. Download the following document for instructions on how to install Policy Patrol on a separate machine:



[Installing Policy Patrol on a separate machine](http://www.policypatrol.com/docs/PP5-SeparateMachine.pdf)

(<http://www.policypatrol.com/docs/PP5-SeparateMachine.pdf>)

⇒ If you have **Exchange 5.5**, you must install Policy Patrol on a separate Windows 2000/2003/XP machine and forward your mail to the Windows SMTP service on the Policy Patrol machine. Policy Patrol does not offer internal mail filtering for Exchange 5.5. Policy Patrol can retrieve your users & groups from Active Directory or Exchange 5.5. Download the following document for instructions on how to install Policy Patrol with Exchange 5.5:



[Installing Policy Patrol with Exchange 5.5](http://www.policypatrol.com/docs/PP5-Exchange55.pdf)

(<http://www.policypatrol.com/docs/PP5-Exchange55.pdf>)

⇒ If you have **Lotus Domino R5/R6/R7 Mail Server** (or another mail server), you must install Policy Patrol on a separate Windows 2000/2003/XP machine. Policy Patrol does not offer internal mail filtering for Lotus Domino. Policy Patrol can retrieve Lotus Domino users & groups and their user properties for the user merge fields. Download the following document for instructions on how to install Policy Patrol with Lotus Domino:



[Installing Policy Patrol with Lotus Domino](http://www.policypatrol.com/docs/PP5-LotusDomino.pdf)

(<http://www.policypatrol.com/docs/PP5-LotusDomino.pdf>)

⇒ Policy Patrol (32-bit and 64-bit) can be installed in a **clustered** environment. If you wish to install Policy Patrol 32-bit in an Active/Passive cluster, download the document below for further instructions (Policy Patrol 32-bit does not support Active/Active clusters):



[Installing Policy Patrol in a cluster](http://www.policypatrol.com/docs/PP5-Clustering.pdf)

(<http://www.policypatrol.com/docs/PP5-Clustering.pdf>)

Note: You need to purchase an additional server license for the clustered node. The additional server license cost is found in the price list at <http://www.policypatrol.com/pricing.htm>.

⇒ If you have **frontend and backend** Exchange servers, you must always install Policy Patrol on the backend server. However if you use email clients that are using the frontend server to relay their email, you must install Policy Patrol on the frontend server as well as the backend server.

Note: You need to purchase an additional server license for each additional Policy Patrol server installation. The additional server license cost is found in the price list at <http://www.policypatrol.com/pricing.htm>.

⇒ If you have **Policy Patrol 4.x** installed, you can perform an upgrade to version 5 whilst keeping your existing configuration. For further instructions on this, please consult the following document:



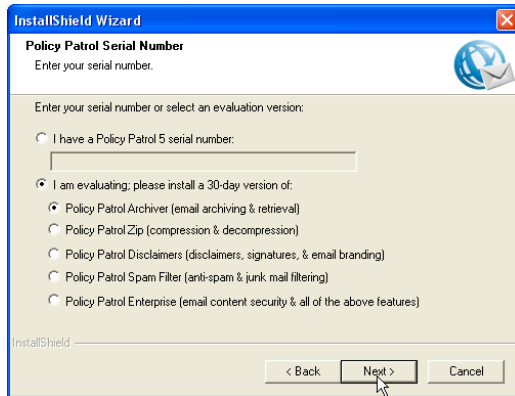
[Policy Patrol 5 Upgrade Guide](http://www.policypatrol.com/docs/PP5-UpgradeGuide.pdf)

(<http://www.policypatrol.com/docs/PP5-UpgradeGuide.pdf>)

⇒ If you have **Policy Patrol 1, 2 or 3** installed, it is not possible to use your existing configuration files in version 5. To migrate your existing configuration to version 5, please consult our migration guide at <http://www.policypatrol.com/pp5migrationguide.htm> and follow the instructions on the page.

Step 2. Install Policy Patrol

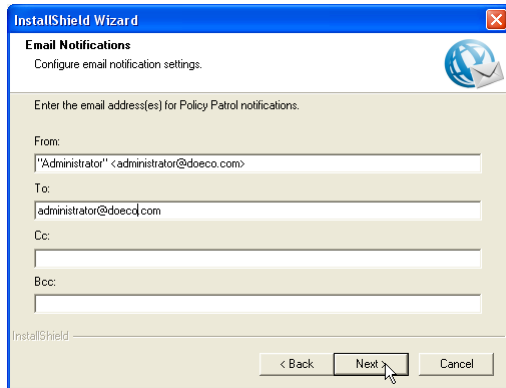
1. Double-click on **PolicyPatrol.exe** (32-bit version) or **PolicyPatrol2k7.exe** (64-bit version). The Install Program will start up. If you do not have Microsoft .NET Framework installed, the Policy Patrol installation program will download it for you.
2. Select your language and click **OK**.
3. In the Welcome screen, click **Next**.
4. Read the License Agreement and select **Yes** to accept the agreement
5. Select the installation type. If you select **Complete**, the complete program will be installed. If you only wish to install the Administration console (for remote administration), select **Administration console only**.
6. Enter your Policy Patrol serial number. If you are evaluating Policy Patrol, select the 30-day evaluation version of **Policy Patrol Archiver**. Click **Next**.



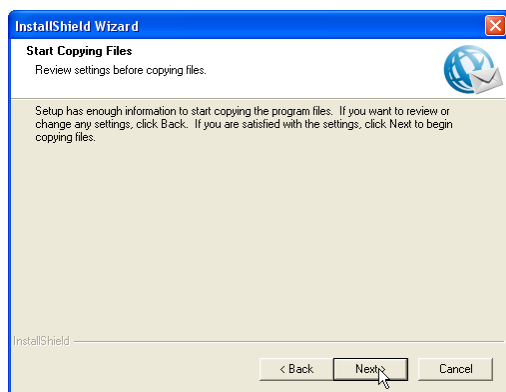
Note: If you are evaluating Policy Patrol and later wish to try out a different Policy Patrol edition you can go to **<server name> > Security > Licenses**, select the license and click **Remove** and **Close**. Policy Patrol will disconnect from the installation. When you connect again, Policy Patrol will allow you to select a new evaluation license type.

If you entered a Policy Patrol Archiver serial number, a message will pop up confirming that the serial number was validated and that Policy Patrol Archiver will be installed.

7. Enter your user name and company name. Select whether you wish to make the program available to anyone or only yourself. Click **Next**.
8. Select the destination folder for the Policy Patrol installation. By default the program will be installed in C:\Program Files\Red Earth Software\Policy Patrol Email (32-bit version) or C:\Program Files\Red Earth Software\Policy Patrol Email for Exchange 2007 (64-bit version). If you wish to change the location, click **Browse** and select another folder. When you are ready, click **Next**.
9. Specify the notification settings. Enter the From:, To:, Cc: and Bcc: fields for the Policy Patrol notification emails. Policy Patrol notification emails inform you about evaluation expiry dates, over licensing issues and new updates to the program. The display name is pre-configured as Administrator, but you can change this by entering the following: "Display name" <email address>, i.e. "Joe Bloggs" <jbloggs@bloggsco.com>. Click **Next**.



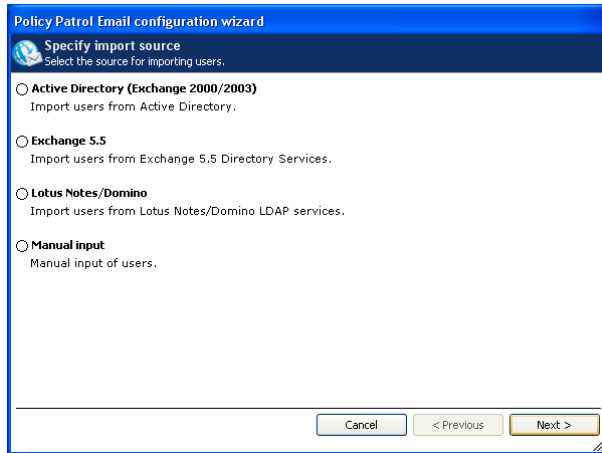
10. Click **Next** to start copying files.



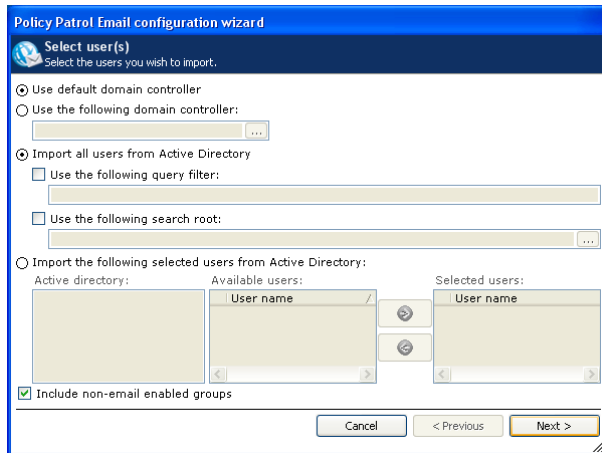
11. When the installation wizard has finished copying the files, click **Finish**.

12. The configuration wizard will now start up. Click **Next** in the Welcome screen.

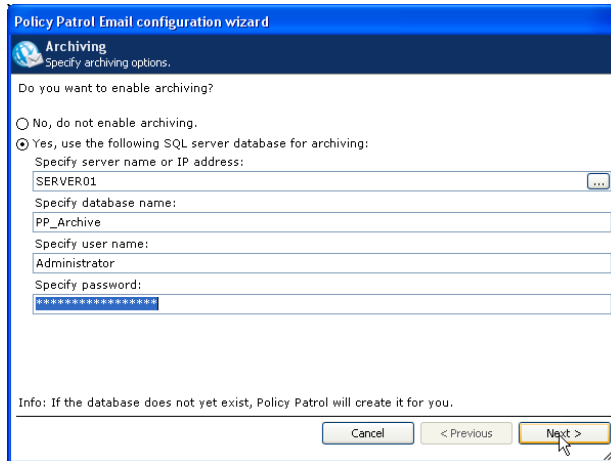
13. Specify the location from where you would like to import your users (Active Directory, Exchange 5.5, Lotus Domino or Manual input) and click **Next**. (Note: the 64-bit version only includes the Active Directory and Manual Input options.)



14. Specify the server or domain controller and select the users that you wish to license. You can either license all users or you can select only certain users to be licensed. For more detailed information on the different options in this dialog, please consult the product manual. Click **Next**.

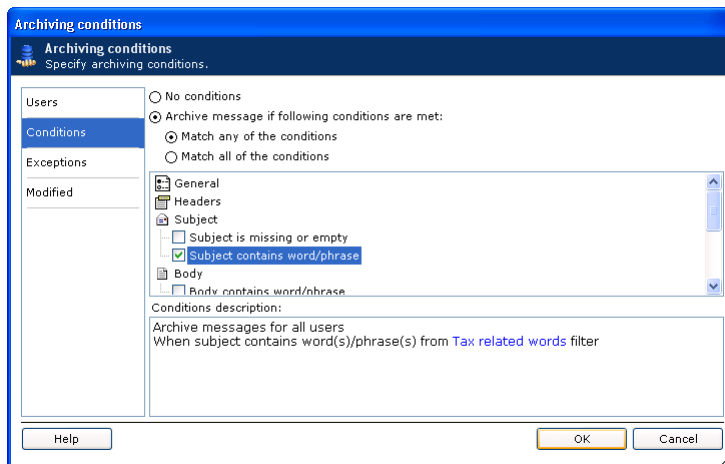


15. Select **Yes, use the following SQL server database for archiving** and specify the SQL Server Database settings; enter the IP address or name of the SQL server or SQL server instance and specify the database name. Enter the user name and password to be used. Policy Patrol will automatically create the database for you. If you do not have SQL Server, you can also specify an MSDE or SQL Server Express database. Click **Next**.



16. In the Configuration complete dialog, click **Finish**.

Step 3. Archiving options



If you do not want all emails to be archived, you can click on the link **Configure archiving conditions** and select users, conditions or exceptions in order to specify which emails should be archived.

By default all messages in the archive are compressed. You can uncheck the option **Compress messages when storing to database** if you want to disable this.

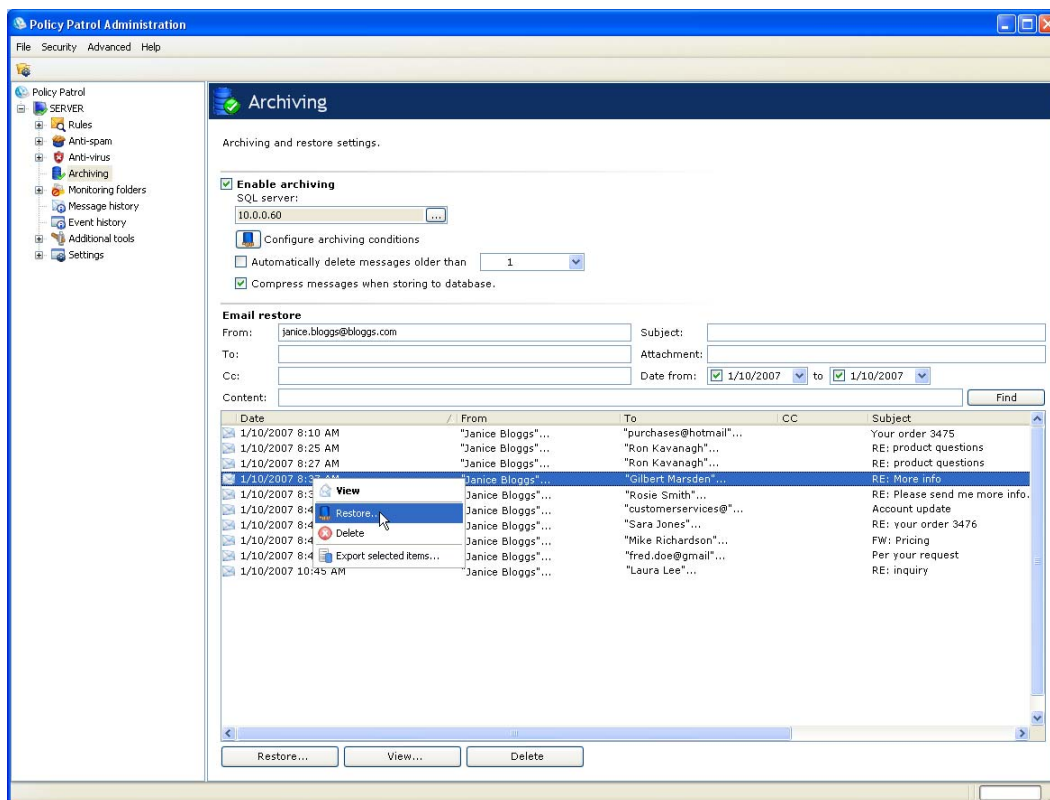
If you wish to automatically purge emails, you can select the option **Automatically delete messages older than** and then specify the number of days, months or years.

Step 4. Retrieve emails

Emails can be retrieved from the Policy Patrol Administration console as well as from the Email restore client. All emails are available in the Administration console, whereas the user can only access their own emails from the Email restore client.

=> To retrieve emails from the Administration console, go to the **Archiving** node and enter your search query. Click **Find**. To restore messages, select the message(s) and click on the **Restore** button or right-click and select **Restore**.

=> To retrieve emails from the Email restore client, the Email restore client must be installed on the client machine. The program can be downloaded from <http://www.policypatrol.com/download.htm>. For further instructions on how to configure the program, please consult the product manual.



Step 5. More information

- ⇒ For more information on how to configure Policy Patrol, please download the product manual from: <http://www.policypatrol.com/download.htm>.
- ⇒ For frequently asked questions, consult our online knowledge base at: <http://www.policypatrol.com/kb.asp>.
- ⇒ If you have any technical or configuration questions please send an email to: support@redearthsoftware.com.

⇒ If you require any assistance, please contact us at one of the following offices:

Red Earth Software, Inc.

595 Millich Drive, Suite 210
Campbell, CA 95008
United States

Toll-free: 1-800-921-8215

Phone: (408) 370 9527

Fax: (408) 608 1958

Sales: sales@reearthsoftware.com

Support: support@reearthsoftware.com

Red Earth Software (UK) Ltd

20 Market Place
Kingston-upon-Thames
Surrey KT1 1JP
United Kingdom

Tel: +44-(0)20-8328 9830

Fax: +44-(0)20-8711 5771

Sales: sales@reearthsoftware.co.uk

Support: support@reearthsoftware.co.uk

Red Earth Software Ltd

Sonic House, Suite 301
43 Artemidos Avenue
6025 Larnaca
Cyprus

Cyprus

Tel: +357-24 828515

Fax: +357-24-828516

Sales: sales@reearthsoftware.com

Support: support@reearthsoftware.com

Policy Patrol® is a registered trademark of Red Earth Software®. Copyright © 2001- 2009 by Red Earth Software.

