

Installing Policy Patrol on a separate machine

If you have Microsoft Exchange Server 2000 or 2003 it is recommended to install Policy Patrol on the same machine, since this will allow you to filter your internal mails and will provide additional functionality such as folder management. However, you can also install Policy Patrol on a separate machine if you prefer. In this case you will need to forward your mails to the Windows SMTP service on the Policy Patrol machine. If you have Microsoft Exchange 2007, you must currently install Policy Patrol on separate machine according to the instructions in this document.

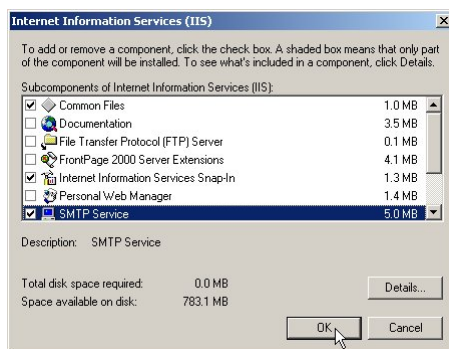
To install Policy Patrol on a separate machine, follow the steps described below.

Step 1. Preparing for installation

System requirements

Before you install Policy Patrol make sure that the following is installed on the machine:

- Windows 2000 Professional/Server/Advanced Server, Windows Server 2003 or Windows XP Professional.
- Windows SMTP service (part of Internet Information Services): This is installed by default on Windows 2000 (Advanced) Server and is an option on Windows Server 2003, Windows 2000 Professional and Windows XP Professional. To install the SMTP service, go to **Start > Settings > Control Panel > Add/Remove Programs > Add/Remove Windows Components**. Select **Internet Information Services** and click on **Details**. Check **SMTP service**. Any other required components are checked automatically. Click **OK**. Click **Next** to install the SMTP service.



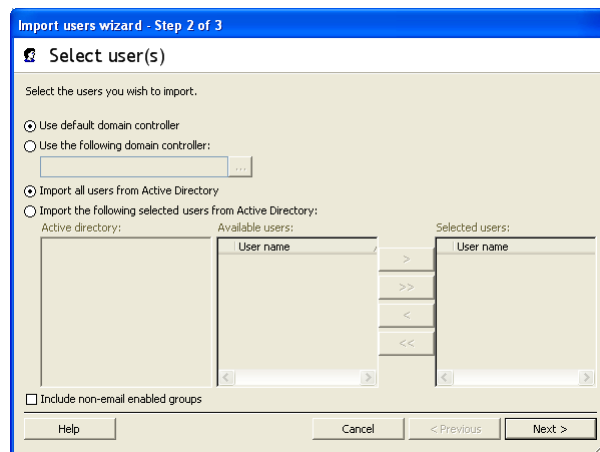
- Microsoft .NET Framework 1.1: If you do not have Microsoft .NET Framework 1.1 installed, the Policy Patrol installation program will download and install this for you.

Step 2. Install Policy Patrol

Install Policy Patrol according to the instructions below:

1. Double-click on **PolicyPatrol.exe**. The Install Program will start up. If you do not have Microsoft .NET Framework 1.1 installed, the Policy Patrol installation program will download it for you.
2. In the Welcome screen, click **Next**.
3. Read the License Agreement and select **Yes** to accept the agreement.
4. Enter the user name and company name. Click **Next**.
5. Select the setup type. If you select **Complete**, the complete program will be installed. If you only wish to install the Administration console (for remote administration), select **Administration only**. If you wish to install only certain components of the program, select **Custom**. Click **Next** to continue.
6. **If you selected Custom:** A list of features will appear. Select which features you wish to install and click **Next**.
7. Select the destination folder for the Policy Patrol installation. By default the program is installed in C:\Program Files\Red Earth Software\Policy Patrol Email 4. If you wish to change the location, click **Browse** and select another folder. When you are ready, click **Next**.
8. Select **Separate machine** and click **Next**. You will be asked to verify the location of your SMTP pickup directory. Policy Patrol automatically enters the path to the default pickup folder. If your pickup directory is located elsewhere, browse to the correct folder. Click **OK**.
9. A message will pop up saying that folder agents are disabled since Policy Patrol is not installed on an Exchange 2000 or 2003 machine. Click **OK**.
10. **If you have multiple virtual SMTP servers an additional dialog will be shown:** Select the virtual SMTP server that you wish Policy Patrol to monitor. Click **Next**.
11. Verify the location of your SMTP pickup directory. Policy Patrol automatically enters the path to the default pickup folder. If your pickup directory is located elsewhere, browse to the correct folder. Click **OK**.
12. Specify the notification settings. Enter the From:, To:, Cc: and Bcc: fields for the Policy Patrol notification emails. Reports will also be sent to these email addresses. The display name is already configured as Administrator, but you can change this as follows: "Display name" <email address>, i.e. "Joe Bloggs" <jbloggs@bloggsco.com>. Click **Next**.

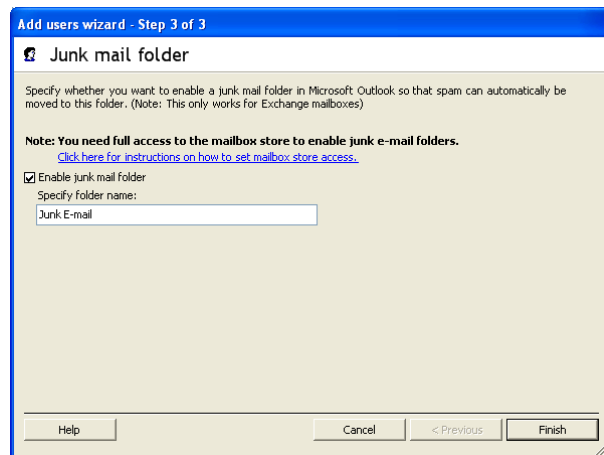
13. Enter the external IP address and port number of the Internet Information Services (IIS) Default Web site in the following format: IP address:port number, i.e. 10.0.0.24:80. This website will be used for the challenge/response system (if you do not want to install the challenge/response website you can go back and select **Custom** as the setup type). Click **Next**.
14. A list with your installation settings will appear. Confirm that you wish to proceed with the installation by clicking **Next**.
15. Policy Patrol will now start copying the files. When Policy Patrol is ready, click **Finish** to exit the wizard.
16. If you selected to run the Policy Patrol Administration console, a screen will pop up asking you to select a license. If you are evaluating Policy Patrol, select one of the 30-day evaluation versions (If you later wish to try out a different Policy Patrol version you can go to <server name> > **Security** > **Licenses**, select the license and click **Remove** and **Close**. Policy Patrol will disconnect from the installation. When you connect again, Policy Patrol will allow you to select a new evaluation license type). If you have purchased Policy Patrol, enter your serial number or click on the **Paste** button to paste it from clipboard. Click **OK**.
17. The Import users wizard will pop up (unless you selected Policy Patrol Archiver as the license type). Follow the next steps:
 - Select **Active Directory (Exchange 2000/2003/2007)** and click **Next**.
 - Leave the option **Use default domain controller** selected, or if you wish to retrieve users from another domain controller, select **Use the following domain controller**. Click ..., select the domain controller you wish to retrieve your users from and click **OK**.



If you wish to create rules based on Active Directory Groups, you must check the option **Include non-email enabled groups** (not applicable to the Spam Filter edition since spam checking is performed for all licensed users). This will for instance allow you to select the sales group when configuring a rule, so that Policy Patrol will automatically apply the rule to all members of the sales group. If you don't tick this check box, Policy Patrol will only retrieve and license email enabled groups. For instance if the sales group uses the email

address sales@company.com, this group will automatically be licensed. If you specified to only license selected users, Policy Patrol will only include non-email enabled groups that the selected users are members of. When you are done, click **Next**.

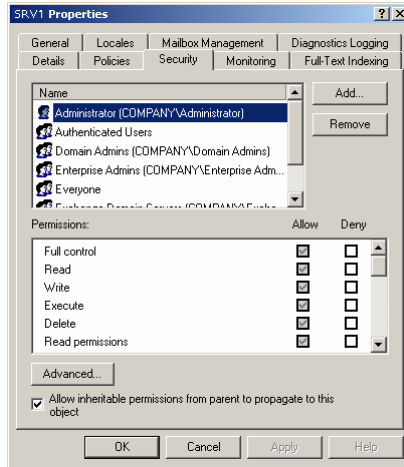
- Specify whether you wish to enable junk mail folders in Microsoft Outlook. If you select this option, Policy Patrol will automatically add a junk mail folder with the specified name to the selected users' Outlook folder list. If the folder name already exists (e.g. Outlook 2003 already includes a Junk E-mail folder), the existing folder will be used by Policy Patrol to forward spam to.



Important: In order to successfully create the junk mail folder, the account that you are logged on with must have access to the user's mailbox store. To check this, follow the next steps:

1. Go to **Start > Programs > Microsoft Exchange > System Manager**.
2. Go to **Servers > <Server name> > <storage group> > Mailbox store**. Right click and select **Properties**.

Select the **Security** tab. Make sure that the account you are logged on with is listed and has **Allow** checked for all permissions. If the account is not listed, click on **Add**.



3. Select the account that you are logged on with and click on **Add**. Click **OK**.
4. Select the account you just added and check **Allow** for each permission. Click **OK**. Now you will be able to create the junk e-mail folder for the users.
 - When you are ready, click **Finish**. You will now see your users in the Licensed user list.

Step 3. Configure Policy Patrol as a mail gateway

Before Policy Patrol can actually filter your emails, you must ensure that your mail flows through Policy Patrol. The following deployment scenarios are possible:

- Scenario 1: Policy Patrol processes inbound and outbound mail
- Scenario 2: Policy Patrol processes only outbound mail
- Scenario 3: Policy Patrol processes only inbound mail

The instructions for each scenario differ depending on whether you have a single Exchange Server or a Bridgehead Exchange Server topology.

Topology A: If you have a single Exchange Server

If you are running a single Exchange Server, select the scenario that applies to your needs and follow the instructions below.

Scenario 1: Policy Patrol processes inbound and outbound mails

If you want Policy Patrol to filter all your mails, you will need to route all mail through the Windows SMTP service on the Policy Patrol machine, as per Figure 1 below. To do this, follow the next instructions:

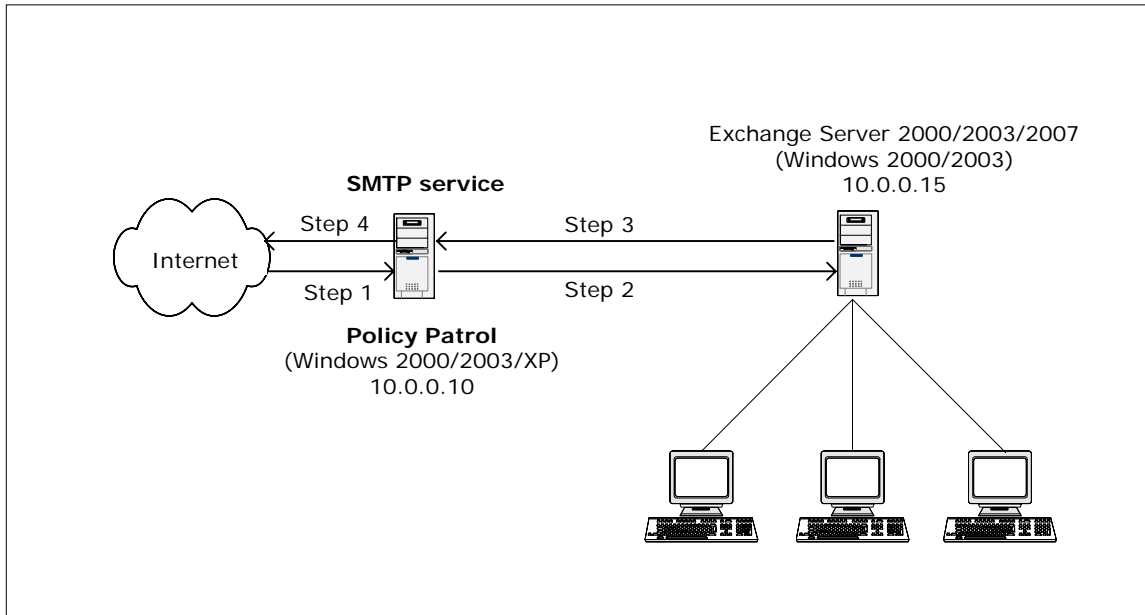
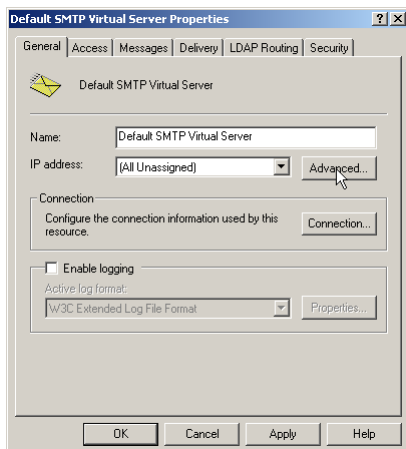


Figure 1 - Policy Patrol processes inbound and outbound mail

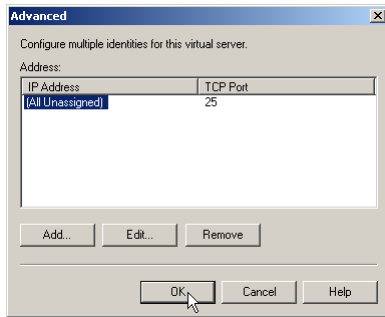
Step 1. Direct incoming mail to the SMTP service on the Policy Patrol machine

Direct your incoming mail to the Windows SMTP service on the Policy Patrol machine (the external DNS servers for your domain must have an mx (mail exchanger) record pointing to the Policy Patrol machine). Furthermore, check the following settings in the Default SMTP Virtual Server:

- On the Policy Patrol machine, go to **Start > Settings > Control Panel > Administrative Tools > Internet Services Manager**.
- Right-click **Default SMTP Virtual Server**, and click **Properties**.
- In the **General** Tab, verify that your IP address is listed as **(All Unassigned)**.

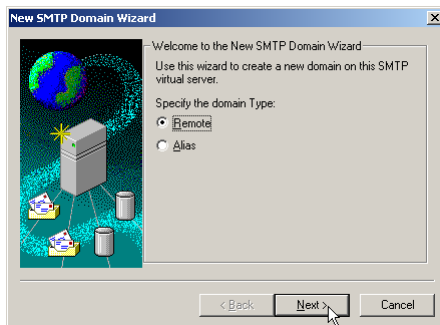


- Click on the **Advanced** button. Verify that the TCP Port is set to 25. Click **OK**.

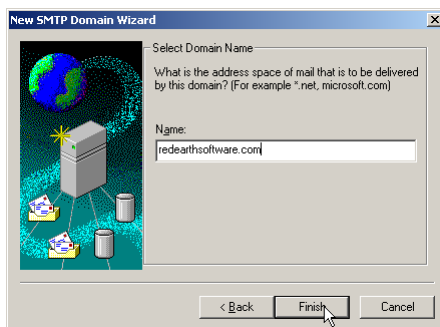


Step 2. Forward mails from the SMTP service to Exchange Server

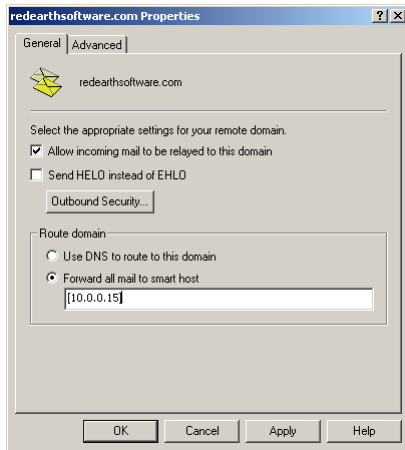
- In the Internet Services Manager, go to **Default SMTP Virtual Server > Domains**.
- Right-click **Domains** and select **New > Domain**.
- The New SMTP Domain Wizard will start up. Select **Remote** and click **Next**.



- Enter the domain name, for instance `reearthsoftware.com`. Click **Finish**.



- Select the newly created domain. Right-click and choose **Properties > General Tab**.

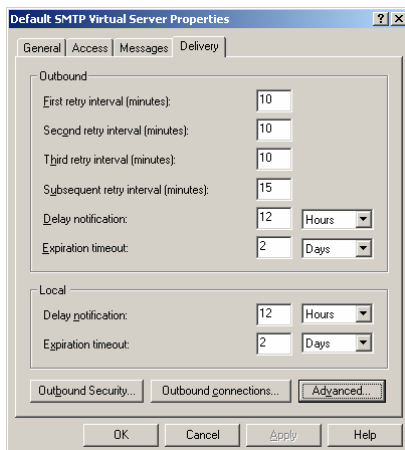


- Tick **Allow incoming mail to be relayed to this domain**. In the 'Route domain' section, select **Forward all mail to smart host** and enter the internal IP address (can be the same as the external IP address) of the Exchange Server in between square brackets, e.g. [10.0.0.15] as per Figure 1. Click **OK**. If you use multiple email domains, repeat step 2 for each email domain.

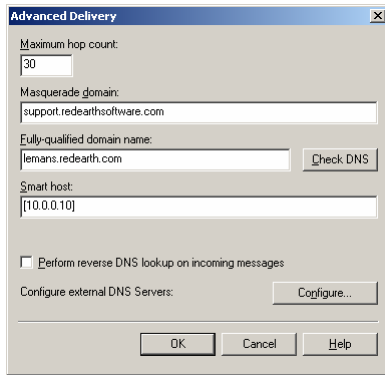
Step 3. Forward your mails from Exchange Server to the SMTP service

If you have Exchange 2000/2003:

- On the Exchange Server machine, open the Exchange System Manager.
- Expand the **Servers** node. Double-click on <Exchange Server name> > **Protocols** > **SMTP**. Right-click **Default SMTP virtual server** and select **Properties**.
- Go to the **Delivery** Tab and click on the **Advanced** button.



- In the **Smart host** dialog box, enter the IP address of the Policy Patrol machine in square brackets, e.g. [10.0.0.10], and click **OK**.

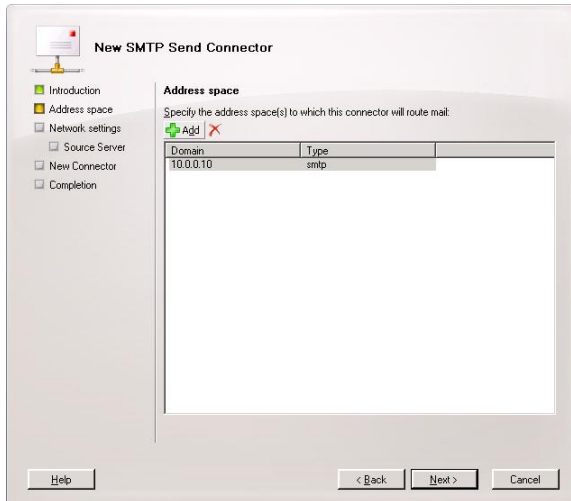


If you have Exchange 2007:

- On the Exchange Server machine, open the Exchange Management Console.
- Expand the **Organization Configuration** node. Click on **Hub Transport**. Open tab **Send Connectors**. Right-click **New Send Connector**.
- Follow the instructions in the connector wizard to set up the send connection to Policy Patrol.



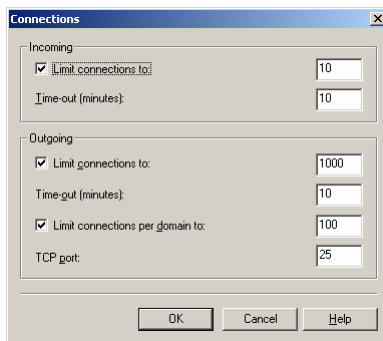
- In the **Address Space**, enter the IP address of the Policy Patrol machine. Click **Next**.



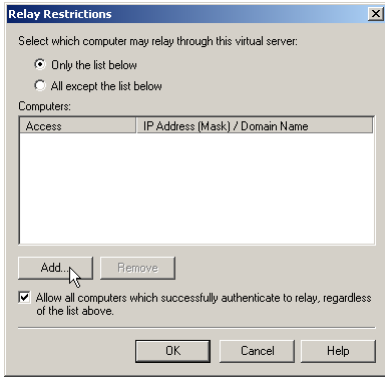
- Check the completion of the wizard and click **Finish**.

Step 4. Configure the SMTP service to send out mails to the Internet

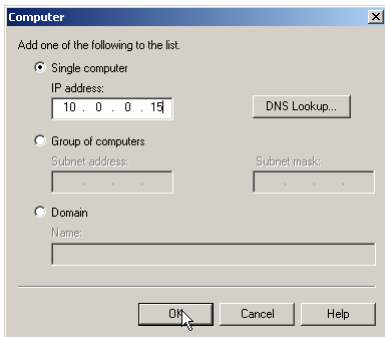
- On the Policy Patrol machine, go to **Start > Settings > Control Panel > Administrative Tools > Internet Services Manager**.
- Right-click **Default SMTP Virtual Server** and select **Properties**.
- In the **General** tab, click on the **Connection** button. Verify that in the 'Outgoing' section, the TCP port is set to 25. Click **OK**.



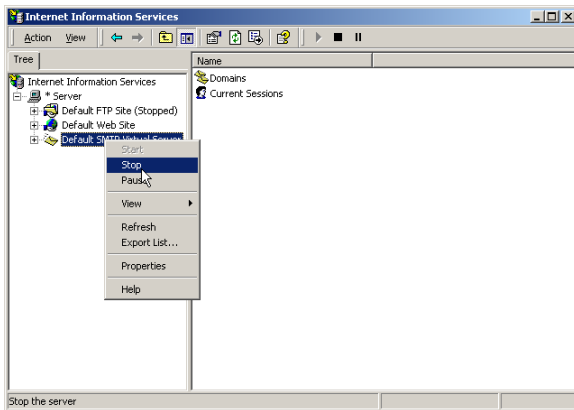
- Go to the **Access** tab and click on the **Relay** button. Select the option **Only the list below** and click on **Add**.



- Enter the internal IP address (can be the same as the external IP address) of the Exchange Server machine in the **Single computer** dialog (in Figure 1 this is 10.0.0.15) and click **OK**. Note: By entering the IP address of the Exchange Server here, you are effectively blocking relaying for all other machines apart from the Exchange Server, therefore ensuring that your relay server cannot be used for spamming.



- Right-click **Default SMTP Virtual Server** and choose **Stop**. Then right-click again and choose **Start**.



You are now ready to start configuring rules in Policy Patrol to filter all your mails.

Scenario 2: Policy Patrol processes only outbound mail

If you only require Policy Patrol to process outbound mails (for instance if you only want to add a disclaimer to outgoing messages), you just need to forward outbound mails to the Windows SMTP service on the Policy Patrol machine, as per Figure 2 below. Your inbound mails will still arrive directly at your Exchange Server. To configure Policy Patrol to process your outbound mails, follow the next steps:

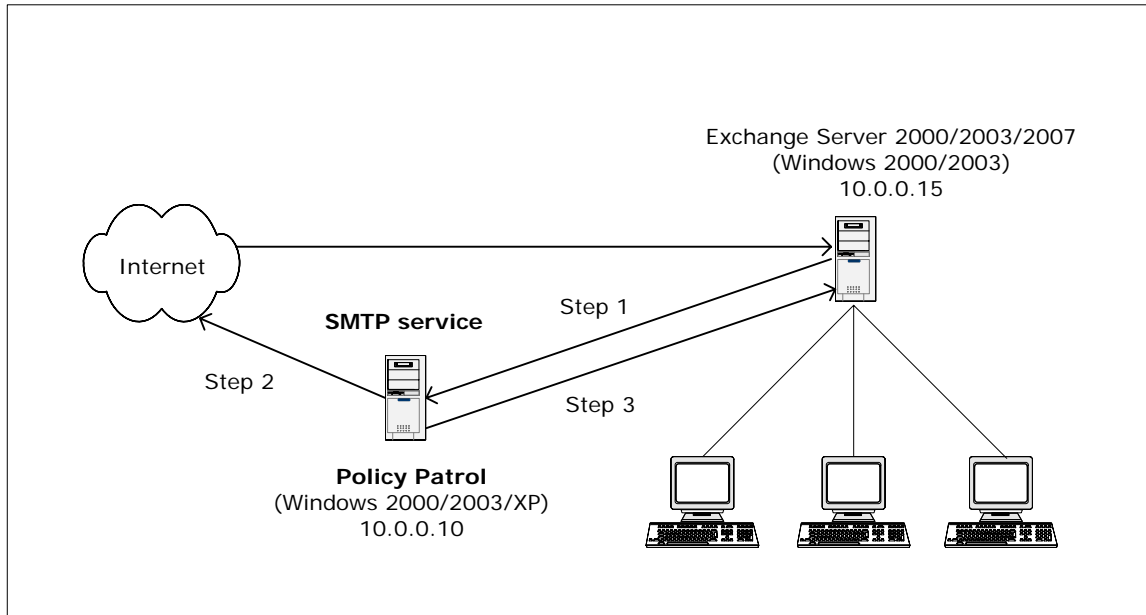
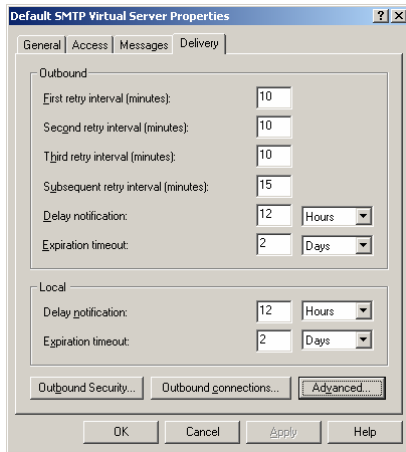


Figure 2 - Policy Patrol processes outbound mail

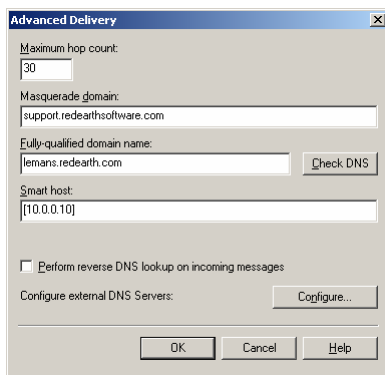
Step 1. Forward your mails from Exchange Server to the SMTP service

If you have Exchange 2000/2003:

- On the Exchange Server machine, open the Exchange System Manager.
- Expand the **Servers** node. Double-click on <Exchange Server name> > **Protocols** > **SMTP**. Right-click **Default SMTP virtual server** and select **Properties**.
- Go to the **Delivery** Tab and click on the **Advanced** button.



- In the **Smart host** dialog box, enter the IP address of the Policy Patrol machine in square brackets, e.g. [10.0.0.10], and click **OK**.

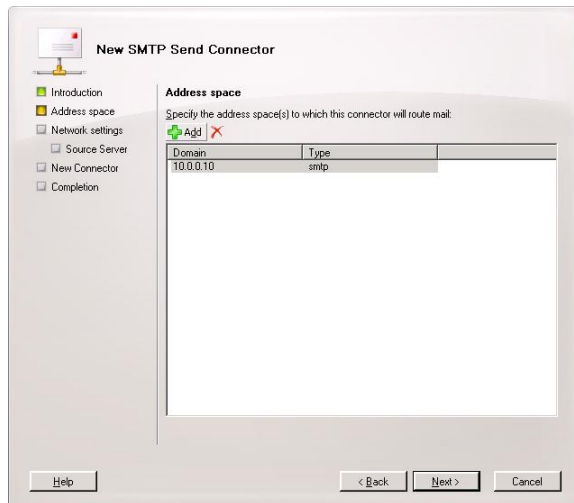


If you have Exchange 2007:

- On the Exchange Server machine, open the Exchange Management Console.
- Expand the **Organization Configuration** node. Click on **Hub Transport**. Open tab **Send Connectors**. Right-click **New Send Connector**.
- Follow the instructions in the connector wizard to set up the send connection to Policy Patrol.



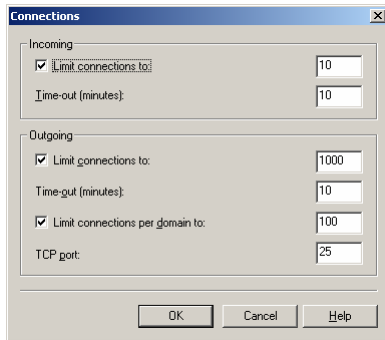
- In the **Address Space**, enter the IP address of the Policy Patrol machine. Click **Next**.



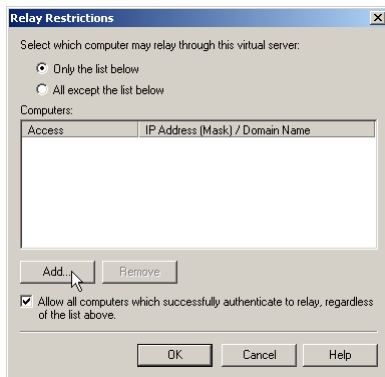
- Check the completion of the wizard and click **Finish**.

Step 2. Configure the SMTP service to send out mails to the Internet

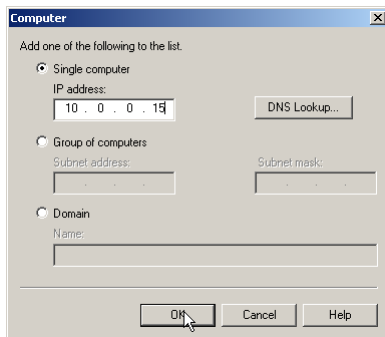
- On the Policy Patrol machine, go to **Start > Settings > Control Panel > Administrative Tools > Internet Services Manager**.
- Right-click **Default SMTP Virtual Server** and select **Properties**.
- In the **General** tab, click on the **Connection** button. Verify that in the 'Outgoing' section, the TCP port is set to 25. Click **OK**.



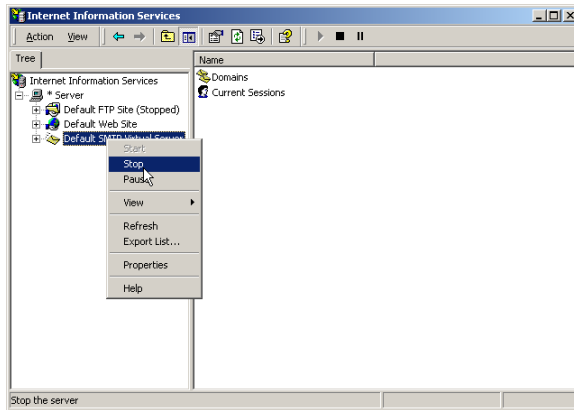
- Go to the **Access** tab and click on the **Relay** button. Select the option **Only the list below** and click on **Add**.



- Enter the internal IP address (can be the same as the external IP address) of the Exchange Server machine in the **Single computer** dialog (in Figure 2 this is 10.0.0.15) and click **OK**. Note: By entering the IP address of the Exchange Server here, you are effectively blocking relaying for all other machines apart from the Exchange Server, therefore ensuring that your relay server cannot be used for spamming.



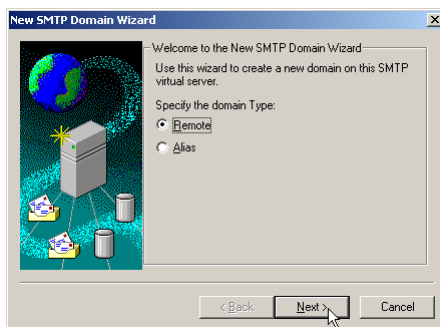
- Right-click **Default SMTP Virtual Server** and choose **Stop**. Then right-click again and choose **Start**.



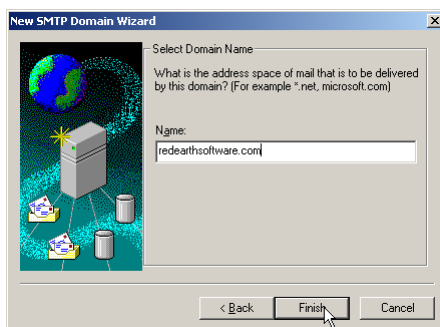
Step 3. Forward mails (NDRs) from the SMTP service to Exchange Server

If the SMTP service cannot deliver a particular message, the Non-delivery messages must be routed back to the Exchange Server. Therefore you must configure the SMTP service to forward messages to the Exchange Server. In this setup, the only messages that will be forwarded are Non-delivery messages.

- In the Internet Services Manager, go to **Default SMTP Virtual Server > Domains**.
- Right-click **Domains** and select **New > Domain**.
- The New SMTP Domain Wizard will start up. Select **Remote** and click **Next**.

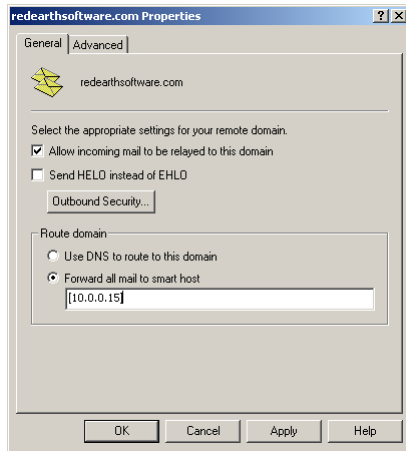


- Enter the domain name, for instance `redearthsoftware.com`. Click **Finish**.



- Select the newly created domain. Right-click and choose **Properties > General Tab**.

- Tick **Allow incoming mail to be relayed to this domain**. In the 'Route domain' section, select **Forward all mail to smart host** and enter the internal address (can be the same as the external IP address) of the Exchange Server in between square brackets, e.g. [10.0.0.15] as per Figure 2. Click **OK**. If you use multiple email domains, repeat step 3 for each email domain.



You are now ready to start configuring rules in Policy Patrol to filter outbound mails.

Scenario 3: Policy Patrol processes only inbound mail

If you only want Policy Patrol to process inbound mails (for instance to stop spam), you just need to forward incoming mails to the Windows SMTP service on the Policy Patrol machine, as per Figure 3 below. Outgoing mails will continue to be sent out by the Exchange Server. To configure Policy Patrol to process your inbound mails, follow the next steps:

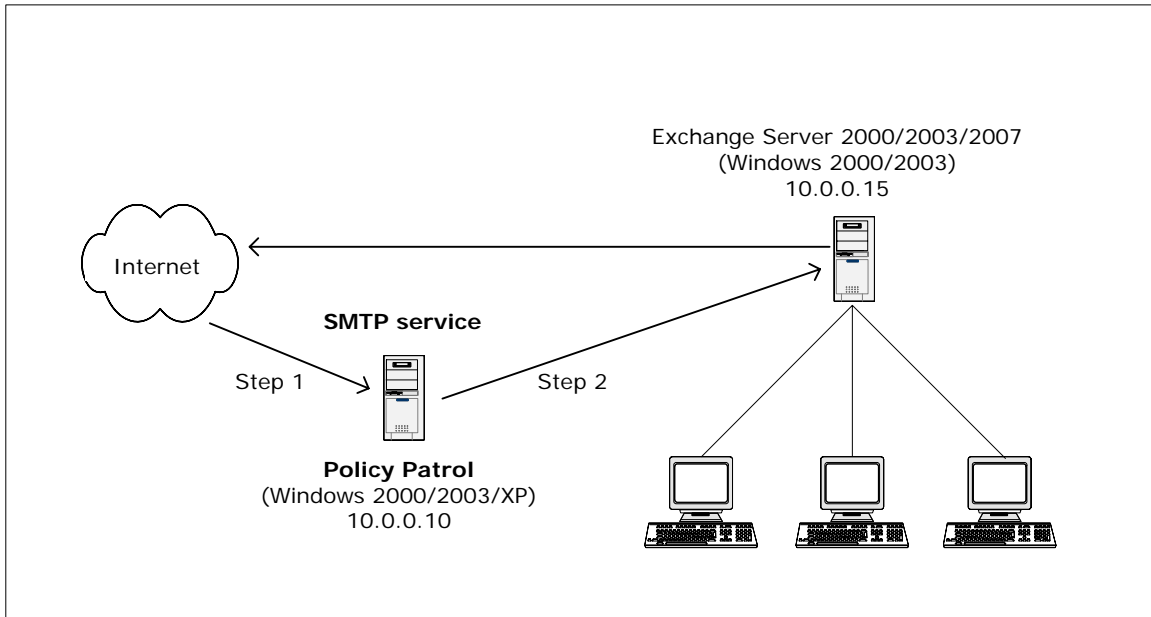
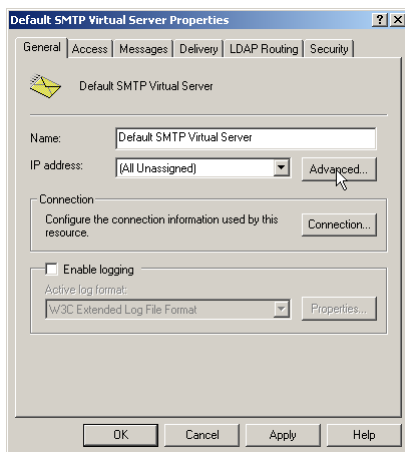


Figure 3 - Policy Patrol processes inbound mail

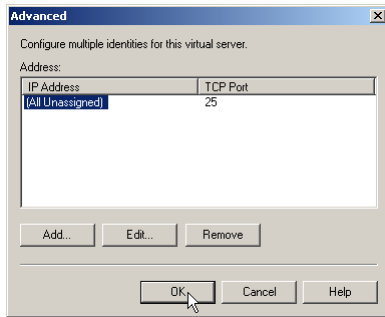
Step 1. Direct incoming mail to the SMTP service on the Policy Patrol machine

Direct your incoming mail to the Windows SMTP service on the Policy Patrol machine (the external DNS servers for your domain must have an mx (mail exchanger) record pointing to the Policy Patrol machine). Furthermore, check the following settings in the Default SMTP Virtual Server:

- On the Policy Patrol machine, go to **Start > Settings > Control Panel > Administrative Tools > Internet Services Manager**.
- Right-click **Default SMTP Virtual Server**, and click **Properties**.
- In the **General** Tab, verify that your IP address is listed as **(All Unassigned)**.

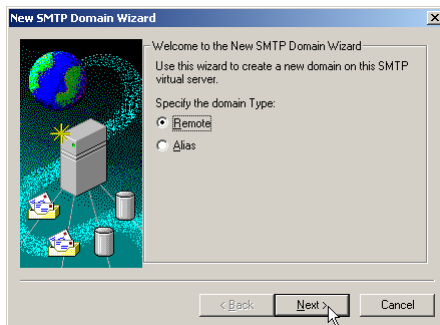


- Click on the **Advanced** button. Verify that the TCP Port is set to 25. Click **OK**.

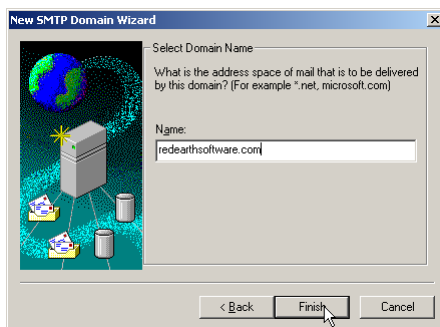


Step 2. Forward mails from the SMTP service to Exchange Server

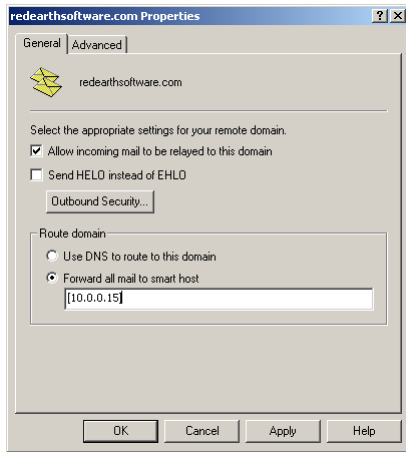
- In the Internet Services Manager, go to **Default SMTP Virtual Server > Domains**.
- Right-click **Domains** and select **New > Domain**.
- The New SMTP Domain Wizard will start up. Select **Remote** and click **Next**.



- Enter the domain name, for instance `redearthsoftware.com`. Click **Finish**.



- Select the newly created domain. Right-click and choose **Properties > General Tab**.
- Tick **Allow incoming mail to be relayed to this domain**. In the 'Route domain' section, select **Forward all mail to smart host** and enter the internal IP address (can be the same as the external IP address) of the Exchange Server in between square brackets, e.g. `[10.0.0.15]` as per Figure 3. Click **OK**. If you use multiple email domains, repeat step 2 for each email domain.



You are now ready to start configuring rules in Policy Patrol to filter inbound mails.

Topology B: If you have a Bridgehead Exchange Server

If you have deployed a bridgehead Exchange Server, select the scenario that applies to your needs and follow the instructions below.

Scenario 1: Policy Patrol processes inbound and outbound mails

If you want Policy Patrol to filter all your mails, you will need to route all mail through the Windows SMTP service on the Policy Patrol machine, as per Figure 4 below. To do this, follow the next instructions:

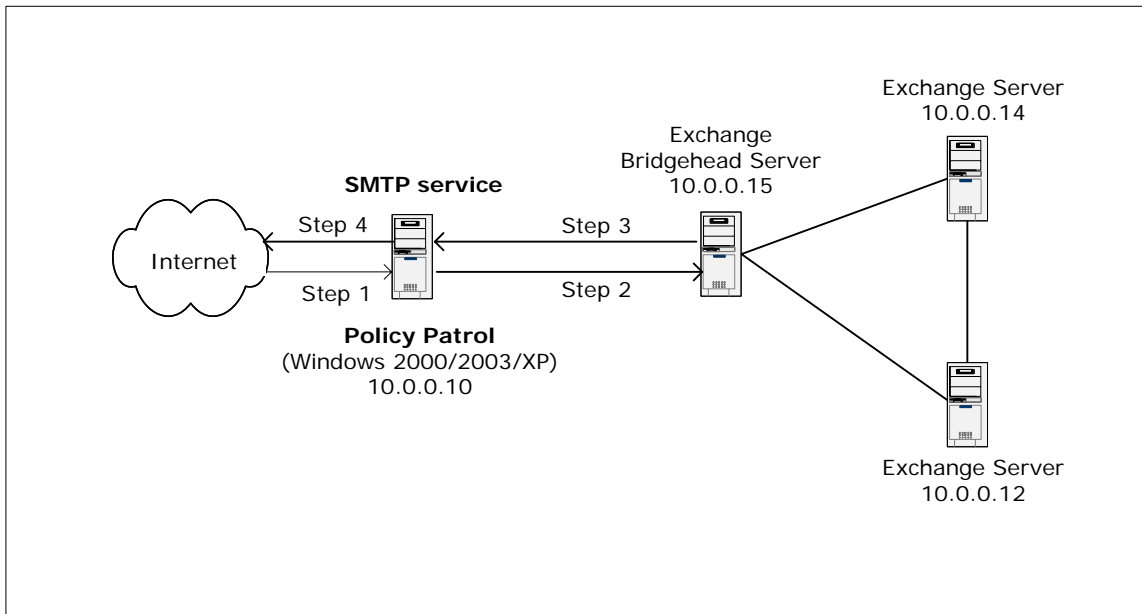
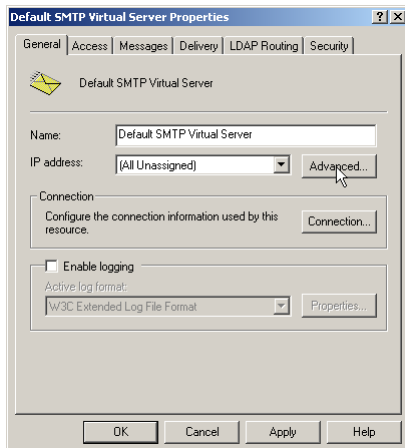


Figure 4 - Policy Patrol processes inbound and outbound mail for the Exchange bridgehead server

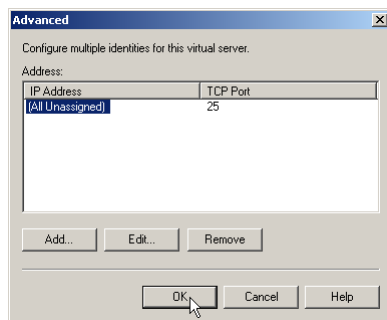
Step 1. Direct incoming mail to the SMTP service on the Policy Patrol machine

Direct your incoming mail to the Windows SMTP service on the Policy Patrol machine (the external DNS servers for your domain must have an mx (mail exchanger) record pointing to the Policy Patrol machine). Furthermore, check the following settings in the Default SMTP Virtual Server:

- On the Policy Patrol machine, go to **Start > Settings > Control Panel > Administrative Tools > Internet Services Manager**.
- Right-click **Default SMTP Virtual Server**, and click **Properties**.
- In the **General** Tab, verify that your IP address is listed as **(All Unassigned)**.

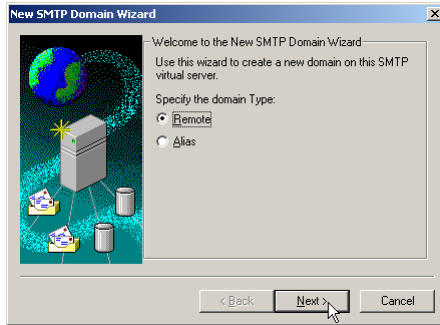


- Click on the **Advanced** button. Verify that the TCP Port is set to 25. Click **OK**.

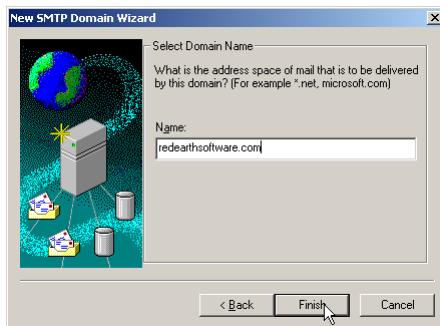


Step 2. Forward mails from the SMTP service to the bridgehead server

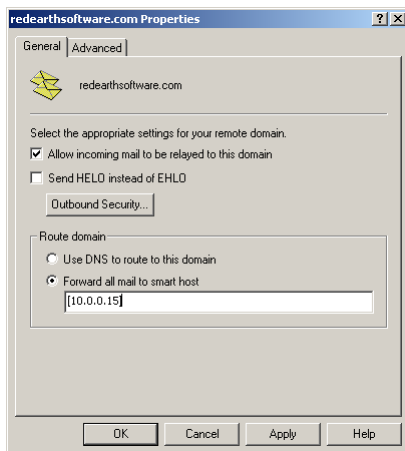
- In the Internet Services Manager, go to **Default SMTP Virtual Server > Domains**.
- Right-click **Domains** and select **New > Domain**.
- The New SMTP Domain Wizard will start up. Select **Remote** and click **Next**.



- Enter the domain name, for instance `redearthsoftware.com`. Click **Finish**.



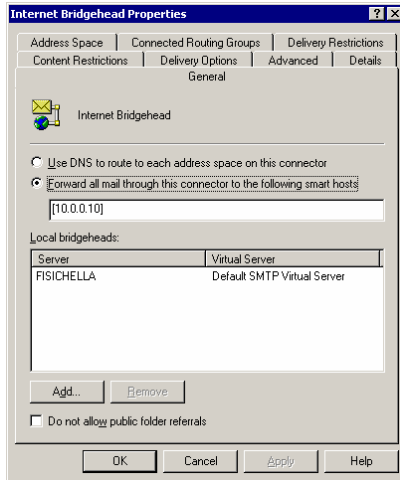
- Select the newly created domain. Right-click and choose **Properties > General Tab**.



- Tick **Allow incoming mail to be relayed to this domain**. In the 'Route domain' section, select **Forward all mail to smart host** and enter the internal IP address (can be the same as the external IP address) of the Bridgehead Exchange Server in between square brackets, e.g. `[10.0.0.15]` as per Figure 4. Click **OK**. If you use multiple email domains, repeat step 2 for each email domain.

Step 3. Forward your mails from the bridgehead server to the SMTP service

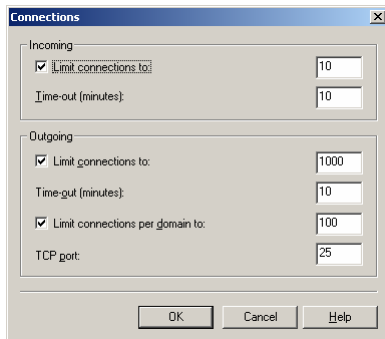
- Open the **Exchange System Manager** and expand the **Connectors** node.
- Right-click **<SMTP Connector name>** and select **Properties**.



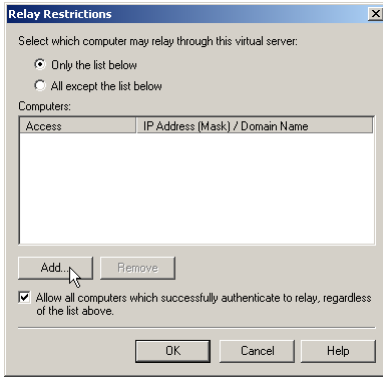
- In the **General** Tab, select **Forward all mail through this connector to the following smart hosts** and enter the IP address of the Policy Patrol machine in square brackets, e.g. [10.0.0.10] as per Figure 4. Click **OK**.

Step 4. Configure the SMTP service to send out mails to the Internet

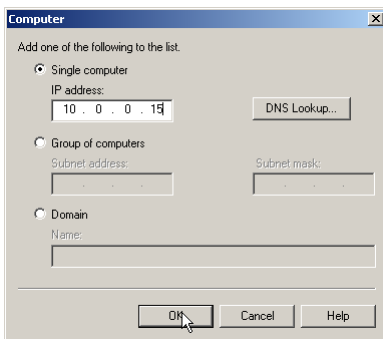
- On the Policy Patrol machine, go to **Start > Settings > Control Panel > Administrative Tools > Internet Services Manager**.
- Right-click **Default SMTP Virtual Server** and select **Properties**.
- In the **General** tab, click on the **Connection** button. Verify that in the 'Outgoing' section, the TCP port is set to 25. Click **OK**.



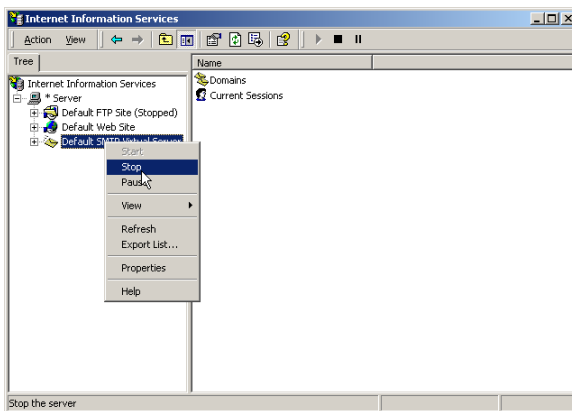
- Go to the **Access** tab and click on the **Relay** button. Select the option **Only the list below** and click on **Add**.



- Enter the internal IP address (can be the same as the external IP address) of the bridgehead server in the **Single computer** dialog (in Figure 4 this is 10.0.0.15) and click **OK**. Note: By entering the IP address of the Exchange bridgehead server here, you are effectively blocking relaying for all other machines apart from the bridgehead server, therefore ensuring that your relay server cannot be used for spamming.



- Right-click **Default SMTP Virtual Server** and choose **Stop**. Then right-click again and choose **Start**.



You are now ready to start configuring rules in Policy Patrol to filter all your mails.

Scenario 2: Policy Patrol processes only outbound mail

If you only require Policy Patrol to process outbound mails (for instance if you only want to add a disclaimer to outgoing messages), you just need to forward outbound mails to

the Windows SMTP service on the Policy Patrol machine, as per Figure 5 below. Your inbound mails will still arrive directly at your bridgehead server. To configure Policy Patrol to process your outbound mails, follow the next steps:

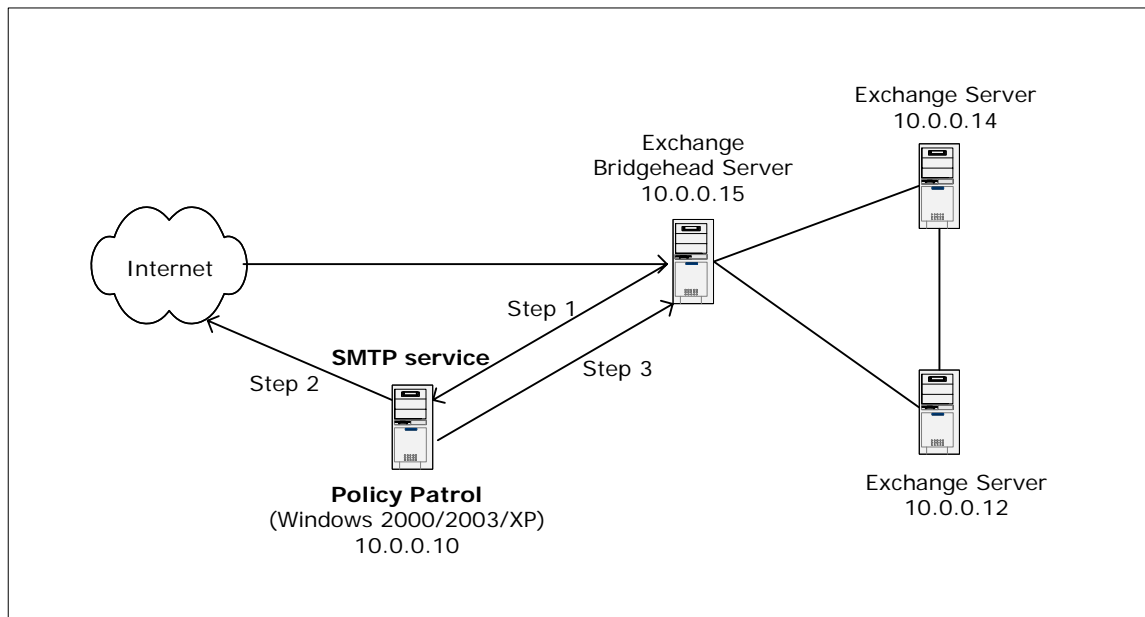
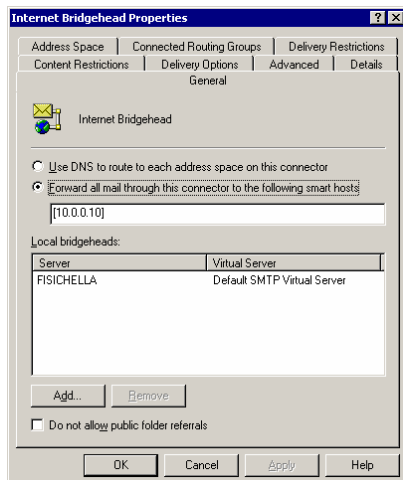


Figure 5 - Policy Patrol processes outbound mail from the Exchange bridgehead server

Step 1. Forward your mails from the bridgehead server to the SMTP service

If you have Exchange 2000/2003:

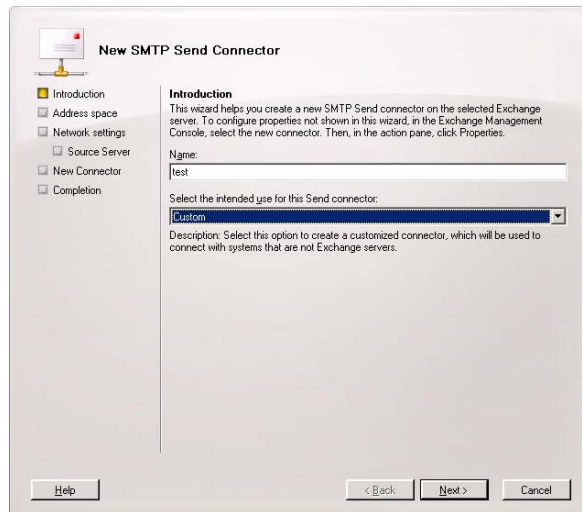
- Open the **Exchange System Manager** and expand the **Connectors** node.
- Right-click **<SMTP Connector name>** and select **Properties**.



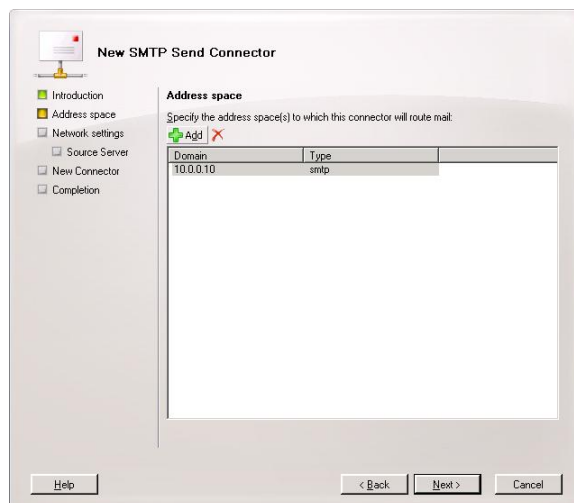
- In the **General** Tab, select **Forward all mail through this connector to the following smart hosts** and enter the IP address of the Policy Patrol machine in square brackets, e.g. [10.0.0.10] as per Figure 5. Click **OK**.

If you have Exchange 2007 Edge Transport Server:

- On the Exchange Server machine, open the Exchange Management Console.
- Expand the **Edge Transport** node. Open the tab **Send Connectors**. Right-click **New Send Connector...**
- Follow the instructions in the connector wizard to set up the send connection to Policy Patrol.



- In the **Address Space**, enter the IP address of the Policy Patrol machine. Click **Next**.

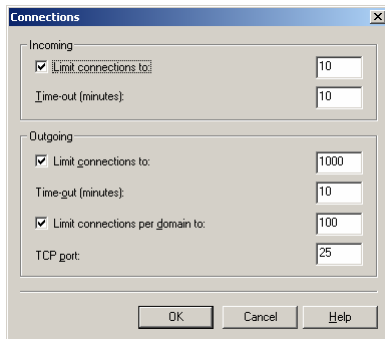


- Check the completion of the wizard and click **Finish**.

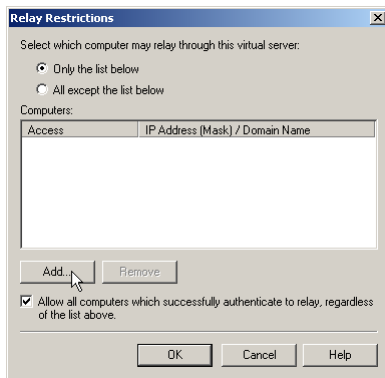
Step 2. Configure the SMTP service to send out mails to the Internet

- On the Policy Patrol machine, go to **Start > Settings > Control Panel > Administrative Tools > Internet Services Manager**.

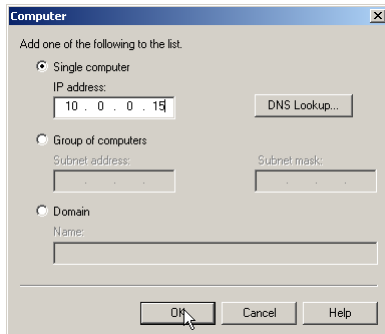
- Right-click **Default SMTP Virtual Server** and select **Properties**.
- In the **General** tab, click on the **Connection** button. Verify that in the 'Outgoing' section, the TCP port is set to 25. Click **OK**.



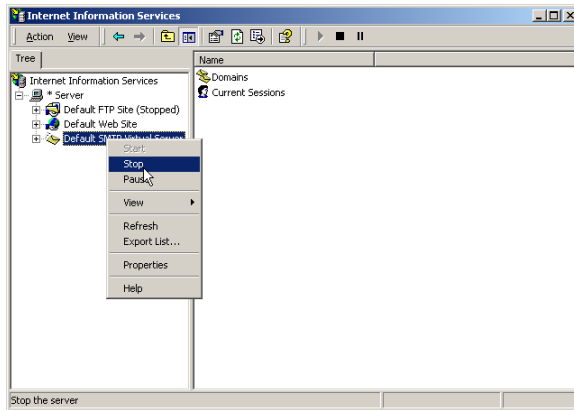
- Go to the **Access** tab and click on the **Relay** button. Select the option **Only the list below** and click on **Add**.



- Enter the internal IP address (can be the same as the external IP address) of the bridgehead server machine in the **Single computer** dialog (in Figure 5 this is 10.0.0.15) and click **OK**. Note: By entering the IP address of the bridgehead server here, you are effectively blocking relaying for all other machines apart from the bridgehead server, therefore ensuring that your relay server cannot be used for spamming.



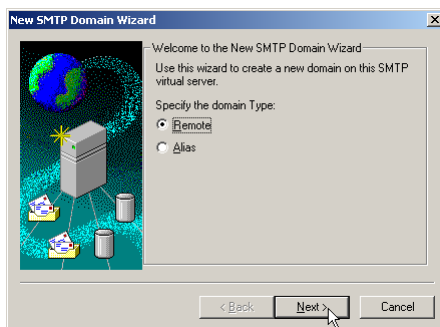
- Right-click **Default SMTP Virtual Server** and choose **Stop**. Then right-click again and choose **Start**.



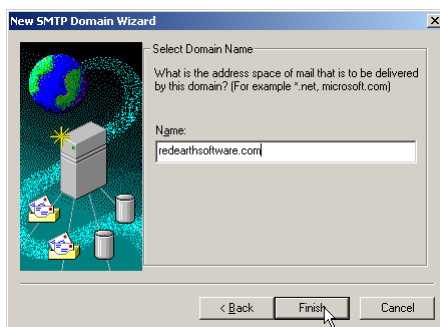
Step 3. Forward NDRs from the SMTP service to the bridgehead server

If the SMTP service cannot deliver a particular message, the Non-delivery messages must be routed back to the bridgehead server. Therefore you must configure the SMTP service to forward messages to the bridgehead server. In this setup, the only messages that will be forwarded are Non-delivery messages.

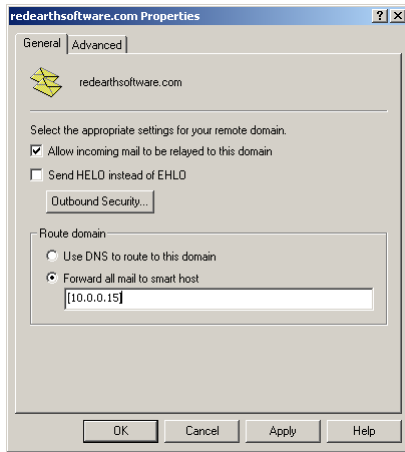
- In the Internet Services Manager, go to **Default SMTP Virtual Server > Domains**.
- Right-click **Domains** and select **New > Domain**.
- The New SMTP Domain Wizard will start up. Select **Remote** and click **Next**.



- Enter the domain name, for instance `redearthsoftware.com`. Click **Finish**.



- Select the newly created domain. Right-click and choose **Properties > General Tab**.



- Tick **Allow incoming mail to be relayed to this domain**. In the 'Route domain' section, select **Forward all mail to smart host** and enter the internal address (can be the same as the external IP address) of the bridgehead server in between square brackets, e.g. [10.0.0.15] as per Figure 5. Click **OK**. If you use multiple email domains, repeat step 3 for each Exchange email domain.

You are now ready to start configuring rules in Policy Patrol to filter outbound mails.

Scenario 3: Policy Patrol processes only inbound mail

If you only want Policy Patrol to process inbound mails (for instance to stop spam), you just need to forward incoming mails to the Windows SMTP service on the Policy Patrol machine, as per Figure 6 below. Outgoing mails will continue to be sent out by the bridgehead server. To configure Policy Patrol to process your inbound mails, follow the next steps:

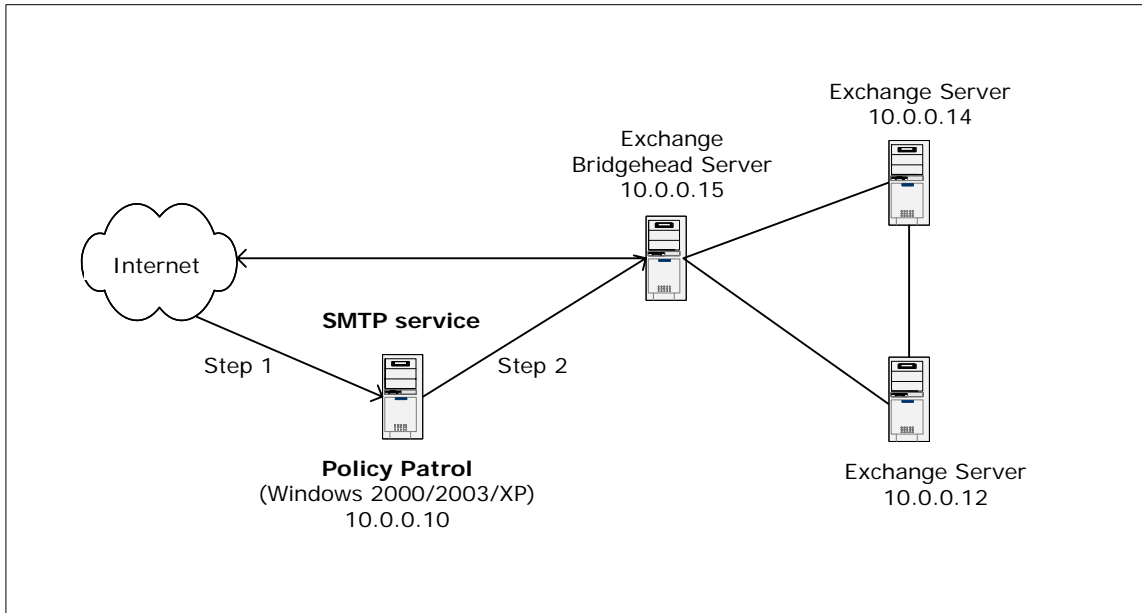
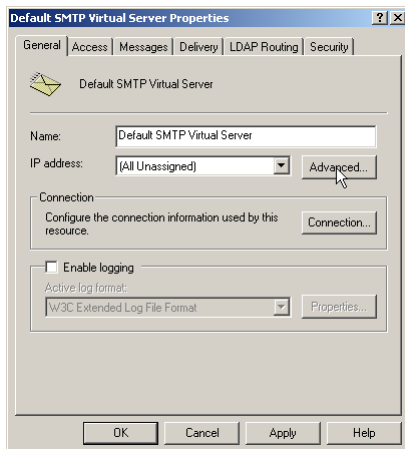


Figure 6 - Policy Patrol processes inbound mail for the Exchange bridgehead server

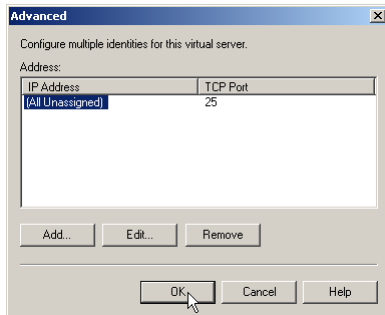
Step 1. Direct incoming mail to the SMTP service on the Policy Patrol machine

Direct your incoming mail to the Windows SMTP service on the Policy Patrol machine (the external DNS servers for your domain must have an mx (mail exchanger) record pointing to the Policy Patrol machine). Furthermore, check the following settings in the Default SMTP Virtual Server:

- On the Policy Patrol machine, go to **Start > Settings > Control Panel > Administrative Tools > Internet Services Manager**.
- Right-click **Default SMTP Virtual Server**, and click **Properties**.
- In the **General** Tab, verify that your IP address is listed as **(All Unassigned)**.

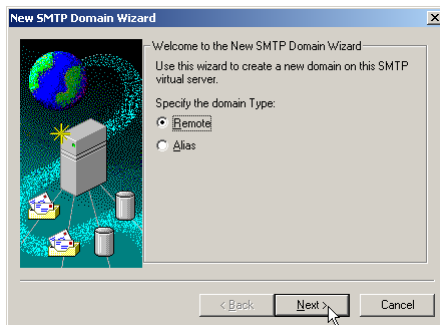


- Click on the **Advanced** button. Verify that the TCP Port is set to 25. Click **OK**.

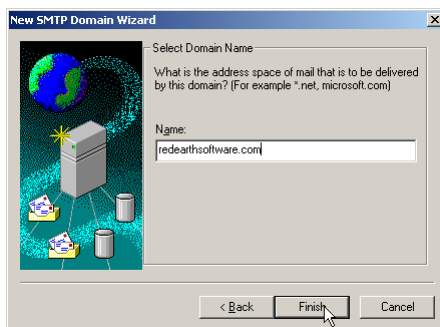


Step 2. Forward mails from the SMTP service to the bridgehead server

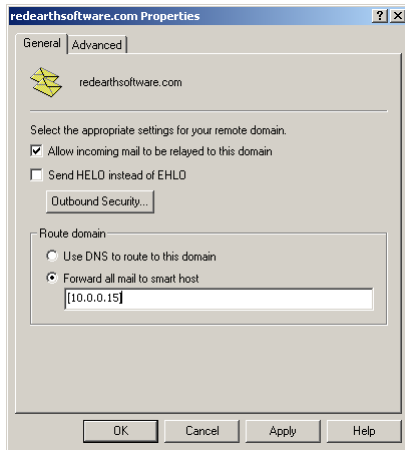
- In the Internet Services Manager, go to **Default SMTP Virtual Server > Domains**.
- Right-click **Domains** and select **New > Domain**.
- The New SMTP Domain Wizard will start up. Select **Remote** and click **Next**.



- Enter the domain name, for instance `reearthsoftware.com`. Click **Finish**.



- Select the newly created domain. Right-click and choose **Properties > General Tab**.



- Tick **Allow incoming mail to be relayed to this domain**. In the 'Route domain' section, select **Forward all mail to smart host** and enter the internal IP address (can be the same as the external IP address) of the bridgehead server in between square brackets, e.g. [10.0.0.15] as per Figure 6. Click **OK**. If you use multiple email domains, repeat step 2 for each email domain.

You are now ready to start configuring rules in Policy Patrol to filter inbound mails.

More information

- ⇒ For more information on how to configure Policy Patrol, please consult the program help or download the product manual from:
<http://www.policypatrol.com/download.htm>.
- ⇒ For more information on relaying your mail through the Windows SMTP service, consult the following Microsoft Knowledge Base article 'XCON: How to set up Windows 2000 as an SMTP Relay Server or Smart Host' at:
<http://support.microsoft.com/default.aspx?scid=kb;en-us;293800>.
- ⇒ If you still have questions after reading this document, please consult our online knowledge base at <http://www.redearthsoftware.com/kb.asp>, or send an email to support@redearthsoftware.com.

Contacting Red Earth Software

Red Earth Software, Inc.

595 Millich Drive
Campbell, CA 95008
United States
Toll-free: 1 (800) 921 8215
Phone: (408) 370 9527
Fax: (408) 608 1958
Sales: sales@redearthsoftware.com
Support: support@redearthsoftware.com

Red Earth Software (UK) Ltd

20 Market Place
Kingston-upon-Thames
Surrey KT1 1JP
United Kingdom
Tel: +44-(0)20-8605 9074
Fax: +44-(0)20-8605 9075
Sales: sales@redearthsoftware.co.uk
Support: support@redearthsoftware.co.uk

Red Earth Software Ltd

Sonic House, Suite 301
43 Artemidos Avenue
6025 Larnaca

Cyprus

Tel: +357-24 828515

Fax: +357-24-828516

Sales: sales@reearthsoftware.com

Support: support@reearthsoftware.com

Policy Patrol® is a registered trademark of Red Earth Software®. Copyright © 2001- 2007 by Red Earth Software.