

Installing Policy Patrol on a separate machine

If you have Microsoft Exchange Server 2000 or 2003 it is recommended to install Policy Patrol on the same machine, since this will allow you to filter your internal mails. However, if you prefer you can also install Policy Patrol on a separate machine. In this case you will need to forward your mails to the Windows SMTP service on the Policy Patrol machine. If installed on a separate machine, Policy Patrol will offer all functionality, apart from internal mail filtering. This is because internal emails will not pass through Policy Patrol if it is not installed on the Exchange 2000/2003 machine.

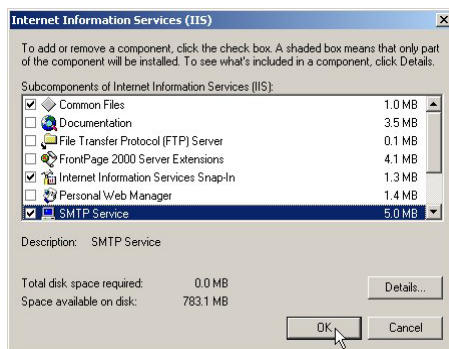
To install Policy Patrol on a separate machine, follow the steps described below.

Step 1. Preparing for installation

System requirements

Before you install Policy Patrol make sure that the following is installed on the machine:

- Windows 2000 Professional/Server/Advanced Server, Windows Server 2003 or Windows XP Professional.
- Windows SMTP service (part of Internet Information Services): This is installed by default on Windows 2000 (Advanced) Server and is an option on Windows Server 2003, Windows 2000 Professional and Windows XP Professional. To install the SMTP service, go to **Start > Settings > Control Panel > Add/Remove Programs > Add/Remove Windows Components**. Select **Internet Information Services** and click on **Details**. Check **SMTP service**. Any other required components are checked automatically. Click **OK**. Click **Next** to install the SMTP service.

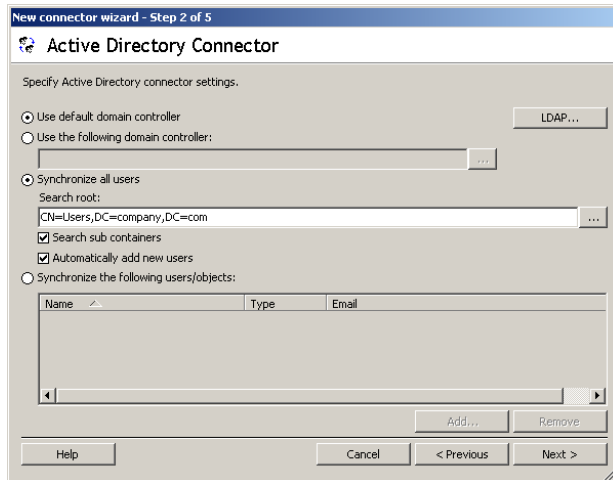


- Microsoft .NET Framework 1.1: If you do not have Microsoft .NET Framework 1.1 installed, you must download Policy Patrol including the .NET Framework or download the Microsoft .NET Framework from the Microsoft website: <http://msdn.microsoft.com/netframework/technologyinfo/howtoget/>.

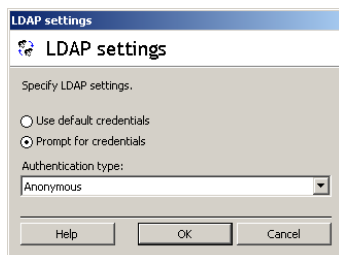
Step 2. Install Policy Patrol

Now install Policy Patrol according to the instructions below:

1. Double-click on **PolicyPatrol.exe**. The Install Program will start up. If you do not have Microsoft .NET Framework 1.1 installed (and the Policy Patrol download did not include it), the installation program will ask you to install it first (see requirements).
2. In the Welcome screen, click **Next**.
3. Read the License Agreement and select **I accept the license agreement**. Click **Next**.
4. Enter the user name and organization name. If you want anyone who is logged on to the computer to be able to access Policy Patrol, select **Anyone who uses this computer (all users)**. If you only wish yourself to be able to access the program, select **Only for me (user name)**. Click **Next**.
5. Select **Complete** as the installation type. Click **Next** to continue.
6. Select the destination folder for the Policy Patrol installation. By default the program is installed in C:\Program Files\Red Earth Software\Policy Patrol 3.0. If you wish to change the location, click **Browse** and select another folder. When you are ready, click **Next**.
7. Select the virtual SMTP server that you wish Policy Patrol to monitor. If you only have one virtual SMTP server installed, leave the default option selected and click **Next**.
8. Confirm that you wish to proceed with the installation by clicking **Next**.
9. Policy Patrol will now start copying the files. When Policy Patrol is ready, click **Finish** to exit the wizard.
10. Open the Policy Patrol Administration console by going to Start > Programs > Policy Patrol 3.0 > Administration. Select **<server name>** and click **Connect**. Select the license type that you wish to install. If you are evaluating, select an evaluation license type. If you have purchased Policy Patrol, enter your serial number. Click **OK**.
11. Create a connector that retrieves your licensed users:
 - Go to **Users > Licensed Users > Connectors** and click on the **New** button.
 - Select **Active Directory (Exchange 2000/2003)** as the connector type and click **Next**.
 - Leave the option **Use default domain controller** enabled, or if you wish to retrieve users from another domain controller, select **Use the following domain controller** and enter the name or IP address of the machine. Alternatively, click **...** and select the domain controller you wish to retrieve your users from and click **OK**.



If, to access the Active Directory, you require a different user log on than the one you are currently logged on with, you can configure Policy Patrol to request user credentials. This might be required if you are configuring a Connector to retrieve users from a different domain. To specify different user credentials, click on the **LDAP** button and select **Prompt for credentials** so that Policy Patrol will request a user name and password before the Active Directory is accessed. In Authentication type, select **None**, **Anonymous** or **Secure Sockets Layer**. If you do not want Policy Patrol to prompt for credentials, leave **Use default credentials** enabled. Note: Remember that if you configure Policy Patrol to prompt for credentials, Policy Patrol will not be able to replace user fields since it will require a log in name and password in order to access Active Directory.



Now select the users that you wish to license:

All users: To license all users in the Active Directory, select **Synchronize all users** and click on **...** to browse to the search root in the Active Directory from which all users must be licensed. If you also wish to license the users in sub containers, tick the option **Search sub containers**. If you wish new users to be automatically licensed, tick the check box **Automatically add new users**. This means that when a new user sends an email for the first time, the user will be licensed and any rule(s) applying to all users or groups that the user is a member of (if the option **Resolve group memberships** is ticked in the connector), will be automatically applied. Note that if you select to automatically add new users you must make sure that you have purchased enough licenses to cover your users. You can also configure a custom query filter that licenses all users that have a certain Active Directory attribute. More information about this can be found in the Policy Patrol manual. Click **Next**.

Selected users: If you only wish to license certain users, select the option **Synchronize the following users/objects** and click on **Add**. In the left pane, select the Active Directory folder that contains the users, select the users you

wish to license and click on the > button. If you wish to license all users in the folder, click >>. When you have selected all users to be licensed, click **OK**. Click **Next**.

- Select the objects to be retrieved. You only need to select the objects that you wish to apply rules to. Click **Next**.
- The user list will now be displayed. All entries with an email address will be counted as a license. Click **Next**.
- Enter a connector name and click **Finish**.

12. Go to <server name> > **Advanced** > **System Configuration** > **System notifications**. Enter the email addresses for the Policy Patrol Administrator(s). These addresses will be used for Policy Patrol system notifications and Administrator notifications configured in rules. You must enter a From: address and at least one To:, Cc: or Bcc: email address.

Step 3. Configure Policy Patrol as a mail gateway

Before Policy Patrol can actually filter your emails, you must ensure that your mail flows through Policy Patrol. The following deployment scenarios are possible:

- Scenario 1: Policy Patrol processes inbound and outbound mail
- Scenario 2: Policy Patrol processes only outbound mail
- Scenario 3: Policy Patrol processes only inbound mail

The instructions for each scenario differ depending on whether you have a single Exchange Server or a Bridgehead Exchange Server topology.

Topology A: If you have a single Exchange Server

If you are running a single Exchange Server, select the scenario that applies to your needs and follow the instructions below.

Scenario 1: Policy Patrol processes inbound and outbound mails

If you want Policy Patrol to filter all your mails, you will need to route all mail through the Windows SMTP service on the Policy Patrol machine, as per Figure 1 below. To do this, follow the next instructions:

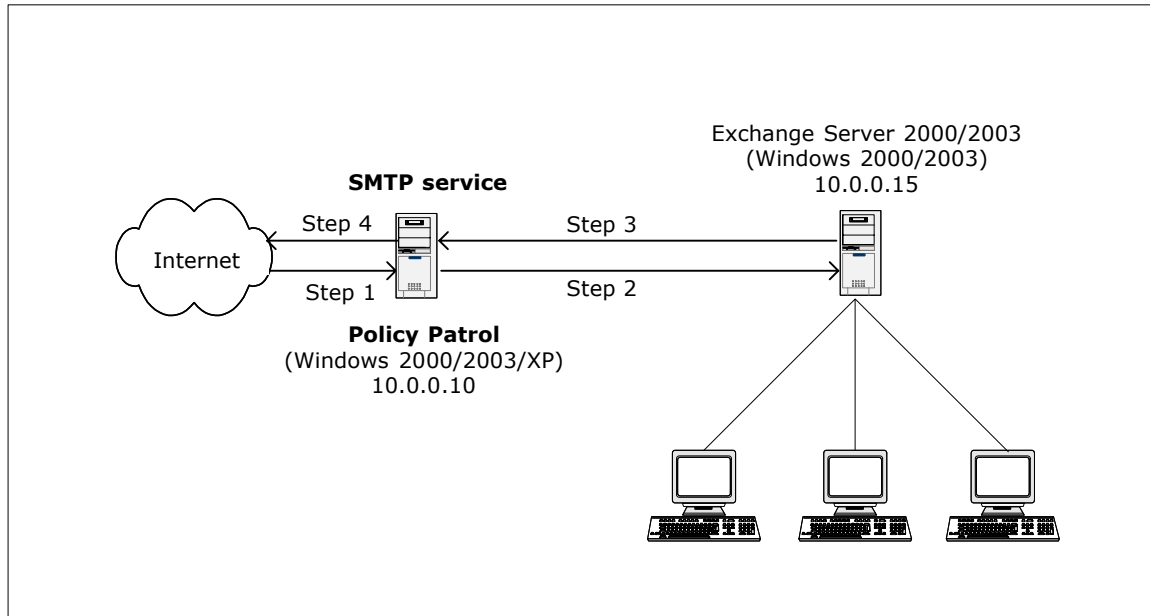
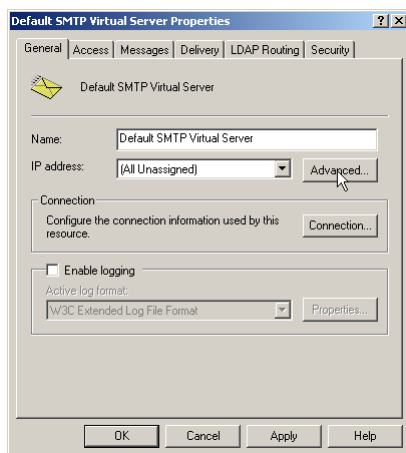


Figure 1 - Policy Patrol processes inbound and outbound mail

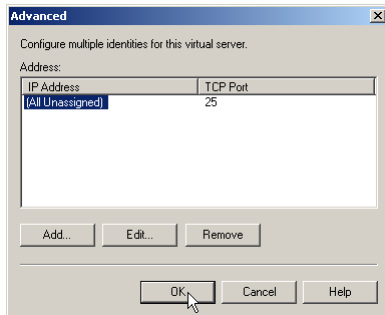
Step 1. Direct incoming mail to the SMTP service on the Policy Patrol machine

Direct your incoming mail to the Windows SMTP service on the Policy Patrol machine (the external DNS servers for your domain must have an mx (mail exchanger) record pointing to the Policy Patrol machine). Furthermore, check the following settings in the Default SMTP Virtual Server:

- On the Policy Patrol machine, go to **Start > Settings > Control Panel > Administrative Tools > Internet Services Manager**.
- Right-click **Default SMTP Virtual Server**, and click **Properties**.
- In the **General** Tab, verify that your IP address is listed as **(All Unassigned)**.

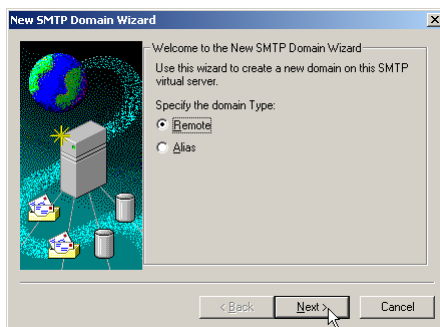


- Click on the **Advanced** button. Verify that the TCP Port is set to 25. Click **OK**.

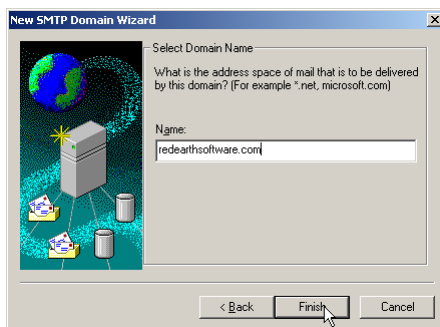


Step 2. Forward mails from the SMTP service to Exchange Server

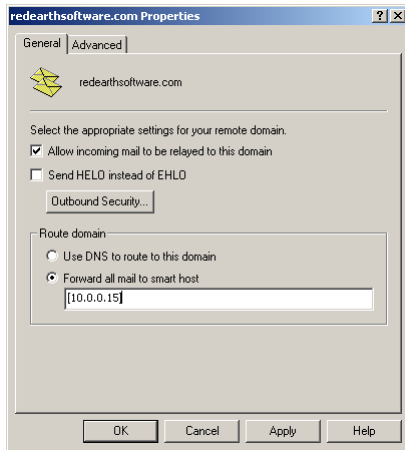
- In the Internet Services Manager, go to **Default SMTP Virtual Server > Domains**.
- Right-click **Domains** and select **New > Domain**.
- The New SMTP Domain Wizard will start up. Select **Remote** and click **Next**.



- Enter the domain name, for instance `reearthsoftware.com`. Click **Finish**.



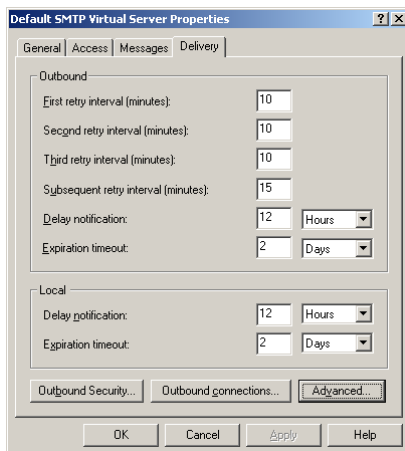
- Select the newly created domain. Right-click and choose **Properties > General Tab**.



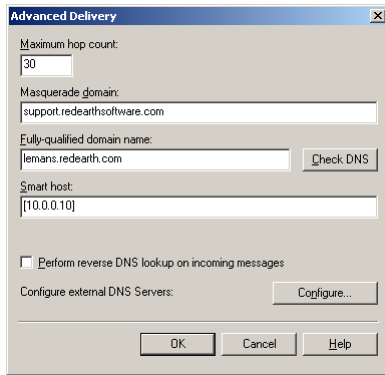
- Tick **Allow incoming mail to be relayed to this domain**. In the 'Route domain' section, select **Forward all mail to smart host** and enter the internal IP address (can be the same as the external IP address) of the Exchange Server in between square brackets, e.g. [10.0.0.15] as per Figure 1. Click **OK**. If you use multiple email domains, repeat step 2 for each email domain.

Step 3. Forward your mails from Exchange Server to the SMTP service

- On the Exchange Server machine, open the Exchange System Manager.
- Expand the **Servers** node. Double-click on **<Exchange Server name> > Protocols > SMTP**. Right-click **Default SMTP virtual server** and select **Properties**.
- Go to the **Delivery** Tab and click on the **Advanced** button.

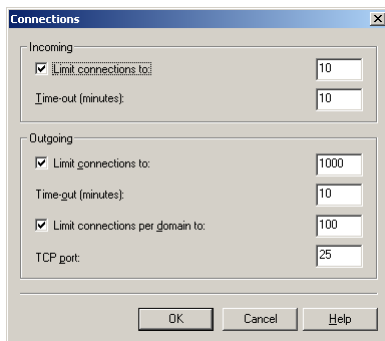


- In the **Smart host** dialog box, enter the IP address of the Policy Patrol machine in square brackets, e.g. [10.0.0.10], and click **OK**.

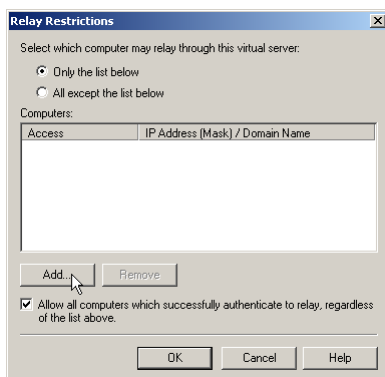


Step 4. Configure the SMTP service to send out mails to the Internet

- On the Policy Patrol machine, go to **Start > Settings > Control Panel > Administrative Tools > Internet Services Manager**.
- Right-click **Default SMTP Virtual Server** and select **Properties**.
- In the **General** tab, click on the **Connection** button. Verify that in the 'Outgoing' section, the TCP port is set to 25. Click **OK**.

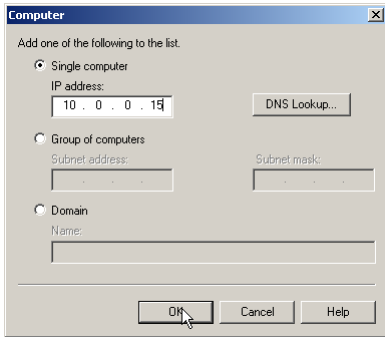


- Go to the **Access** tab and click on the **Relay** button. Select the option **Only the list below** and click on **Add**.

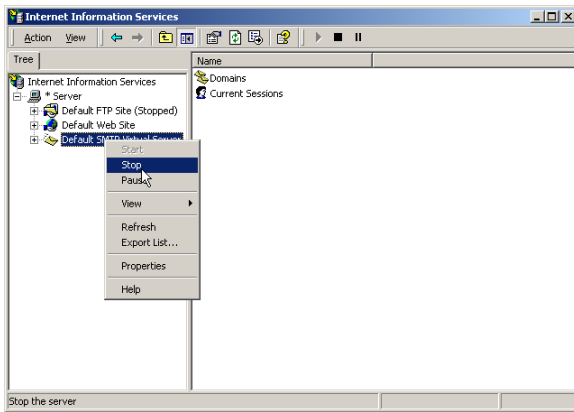


- Enter the internal IP address (can be the same as the external IP address) of the Exchange Server machine in the **Single computer** dialog (in Figure 1 this is 10.0.0.15) and click **OK**. Note: By entering the IP address of the Exchange Server

here, you are effectively blocking relaying for all other machines apart from the Exchange Server, therefore ensuring that your relay server cannot be used for spamming.



- Right-click **Default SMTP Virtual Server** and choose **Stop**. Then right-click again and choose **Start**.



You are now ready to start configuring rules in Policy Patrol to filter all your mails.

Scenario 2: Policy Patrol processes only outbound mail

If you only require Policy Patrol to process outbound mails (for instance if you only want to add a disclaimer to outgoing messages), you just need to forward outbound mails to the Windows SMTP service on the Policy Patrol machine, as per Figure 2 below. Your inbound mails will still arrive directly at your Exchange Server. To configure Policy Patrol to process your outbound mails, follow the next steps:

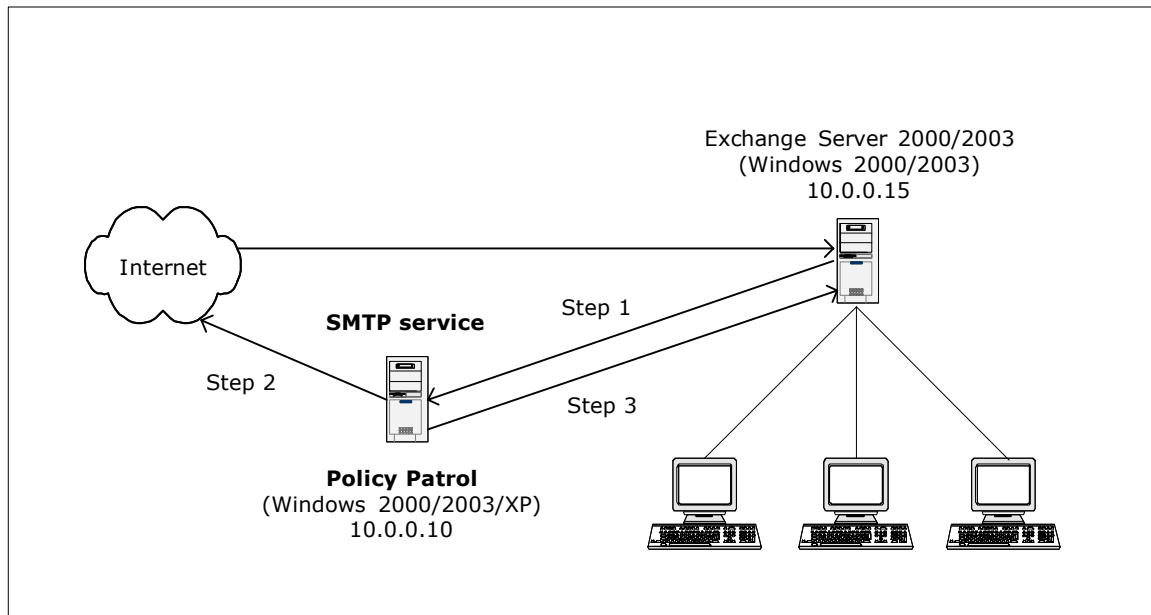
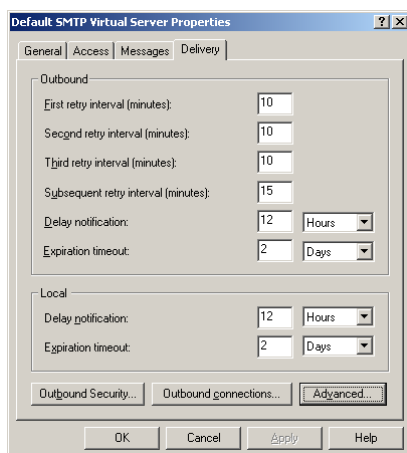


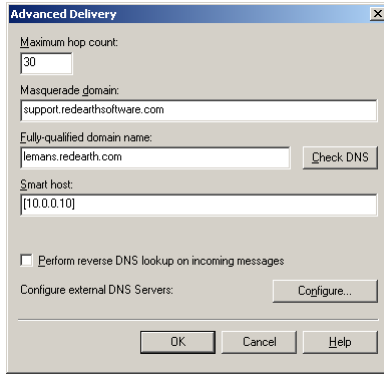
Figure 2 - Policy Patrol processes outbound mail

Step 1. Forward your mails from Exchange Server to the SMTP service

- On the Exchange Server machine, open the Exchange System Manager.
- Expand the **Servers** node. Double-click on **<Exchange Server name> > Protocols > SMTP**. Right-click **Default SMTP virtual server** and select **Properties**.
- Go to the **Delivery** Tab and click on the **Advanced** button.

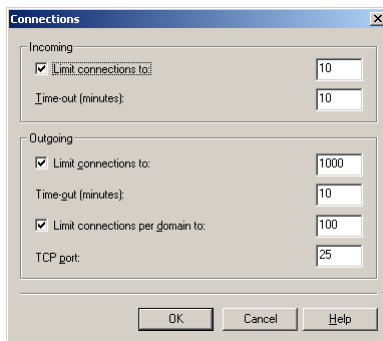


- In the **Smart host** dialog box, enter the IP address of the Policy Patrol machine in square brackets, e.g. [10.0.0.10], and click **OK**.

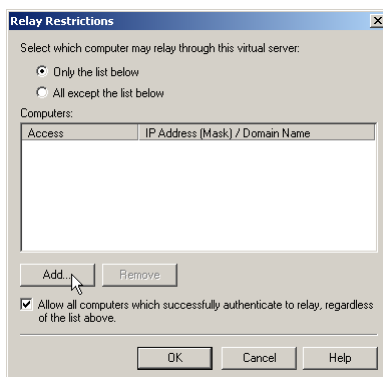


Step 2. Configure the SMTP service to send out mails to the Internet

- On the Policy Patrol machine, go to **Start > Settings > Control Panel > Administrative Tools > Internet Services Manager**.
- Right-click **Default SMTP Virtual Server** and select **Properties**.
- In the **General** tab, click on the **Connection** button. Verify that in the 'Outgoing' section, the TCP port is set to 25. Click **OK**.

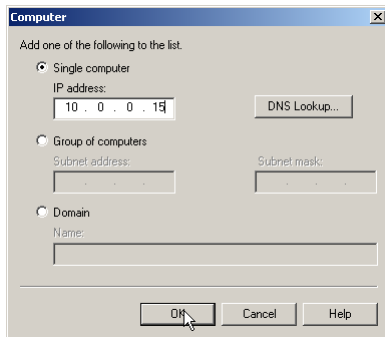


- Go to the **Access** tab and click on the **Relay** button. Select the option **Only the list below** and click on **Add**.

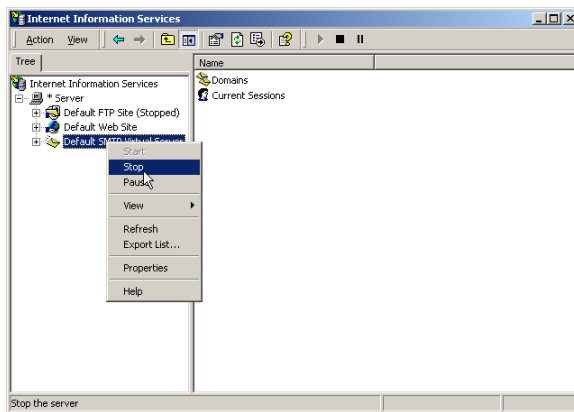


- Enter the internal IP address (can be the same as the external IP address) of the Exchange Server machine in the **Single computer** dialog (in Figure 2 this is 10.0.0.15) and click **OK**. Note: By entering the IP address of the Exchange Server

here, you are effectively blocking relaying for all other machines apart from the Exchange Server, therefore ensuring that your relay server cannot be used for spamming.



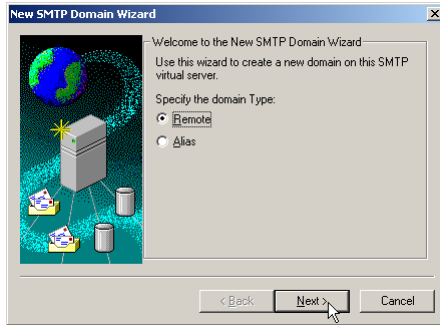
- Right-click **Default SMTP Virtual Server** and choose **Stop**. Then right-click again and choose **Start**.



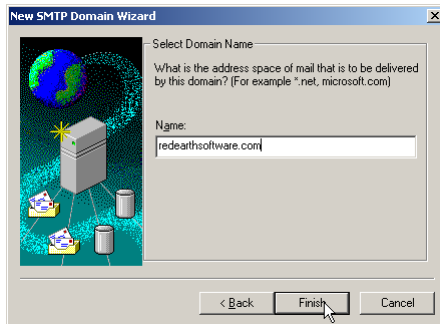
Step 3. Forward mails (NDRs) from the SMTP service to Exchange Server

If the SMTP service cannot deliver a particular message, the Non-delivery messages must be routed back to the Exchange Server. Therefore you must configure the SMTP service to forward messages to the Exchange Server. In this setup, the only messages that will be forwarded are Non-delivery messages.

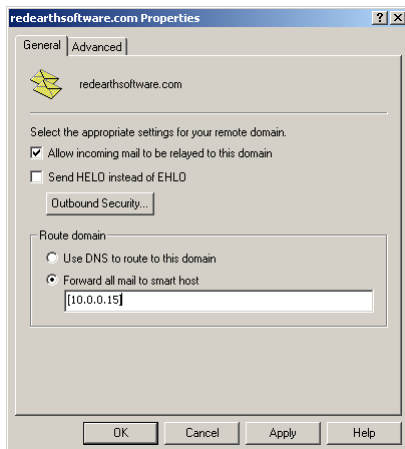
- In the Internet Services Manager, go to **Default SMTP Virtual Server > Domains**.
- Right-click **Domains** and select **New > Domain**.
- The New SMTP Domain Wizard will start up. Select **Remote** and click **Next**.



- Enter the domain name, for instance `redearthsoftware.com`. Click **Finish**.



- Select the newly created domain. Right-click and choose **Properties > General Tab**.
- Tick **Allow incoming mail to be relayed to this domain**. In the 'Route domain' section, select **Forward all mail to smart host** and enter the internal address (can be the same as the external IP address) of the Exchange Server in between square brackets, e.g. `[10.0.0.15]` as per Figure 2. Click **OK**. If you use multiple email domains, repeat step 3 for each email domain.



You are now ready to start configuring rules in Policy Patrol to filter outbound mails.

Scenario 3: Policy Patrol processes only inbound mail

If you only want Policy Patrol to process inbound mails (for instance to stop spam), you just need to forward incoming mails to the Windows SMTP service on the Policy Patrol machine, as per Figure 3 below. Outgoing mails will continue to be sent out by the Exchange Server. To configure Policy Patrol to process your inbound mails, follow the next steps:

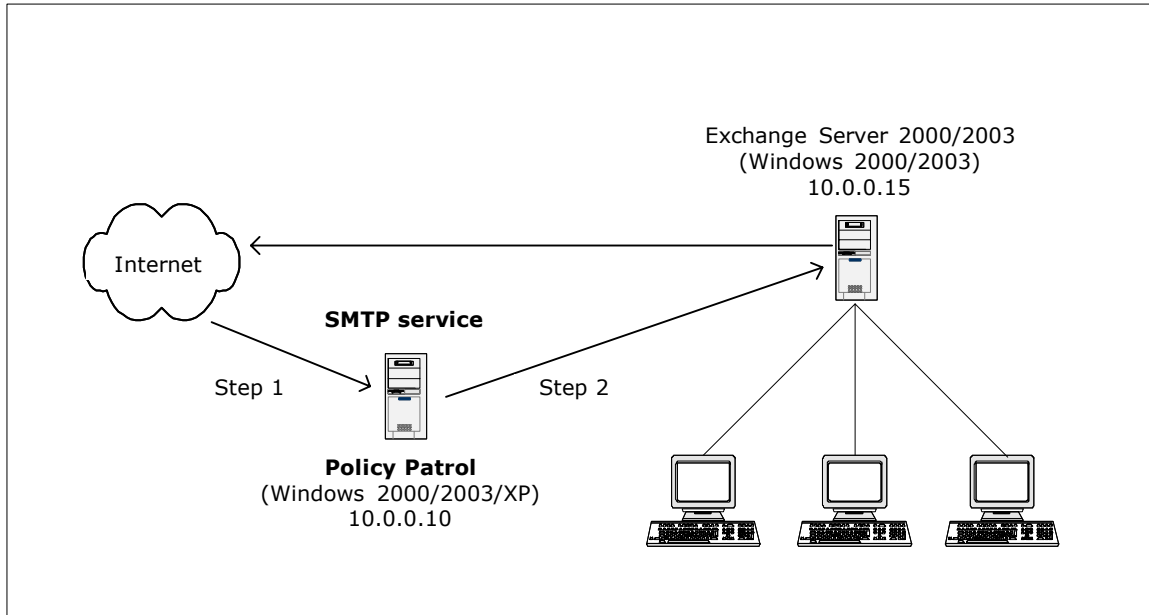
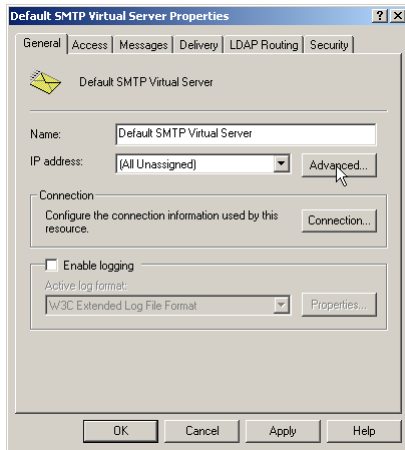


Figure 3 - Policy Patrol processes inbound mail

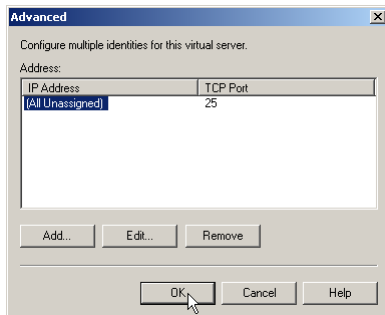
Step 1. Direct incoming mail to the SMTP service on the Policy Patrol machine

Direct your incoming mail to the Windows SMTP service on the Policy Patrol machine (the external DNS servers for your domain must have an mx (mail exchanger) record pointing to the Policy Patrol machine). Furthermore, check the following settings in the Default SMTP Virtual Server:

- On the Policy Patrol machine, go to **Start > Settings > Control Panel > Administrative Tools > Internet Services Manager**.
- Right-click **Default SMTP Virtual Server**, and click **Properties**.
- In the **General** Tab, verify that your IP address is listed as **(All Unassigned)**.

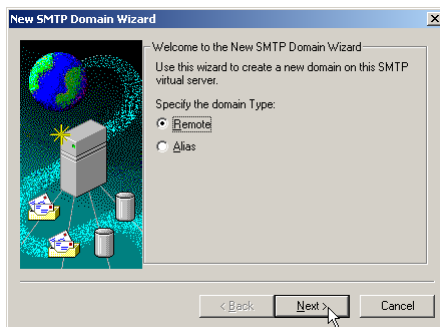


- Click on the **Advanced** button. Verify that the TCP Port is set to 25. Click **OK**.

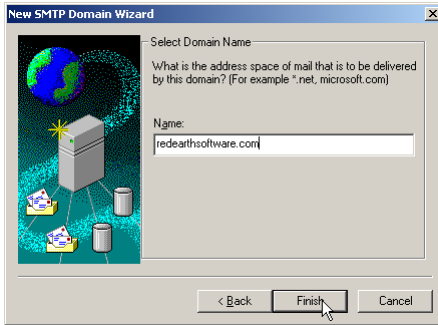


Step 2. Forward mails from the SMTP service to Exchange Server

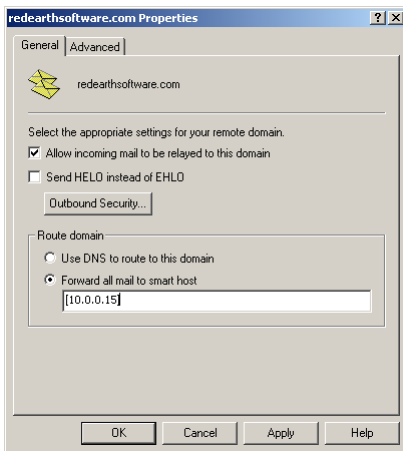
- In the Internet Services Manager, go to **Default SMTP Virtual Server > Domains**.
- Right-click **Domains** and select **New > Domain**.
- The New SMTP Domain Wizard will start up. Select **Remote** and click **Next**.



- Enter the domain name, for instance `redearthsoftware.com`. Click **Finish**.



- Select the newly created domain. Right-click and choose **Properties > General Tab**.
- Tick **Allow incoming mail to be relayed to this domain**. In the 'Route domain' section, select **Forward all mail to smart host** and enter the internal IP address (can be the same as the external IP address) of the Exchange Server in between square brackets, e.g. [10.0.0.15] as per Figure 3. Click **OK**. If you use multiple email domains, repeat step 2 for each email domain.



You are now ready to start configuring rules in Policy Patrol to filter inbound mails.

Topology B: If you have a Bridgehead Exchange Server

If you have deployed a bridgehead Exchange Server, select the scenario that applies to your needs and follow the instructions below.

Scenario 1: Policy Patrol processes inbound and outbound mails

If you want Policy Patrol to filter all your mails, you will need to route all mail through the Windows SMTP service on the Policy Patrol machine, as per Figure 4 below. To do this, follow the next instructions:

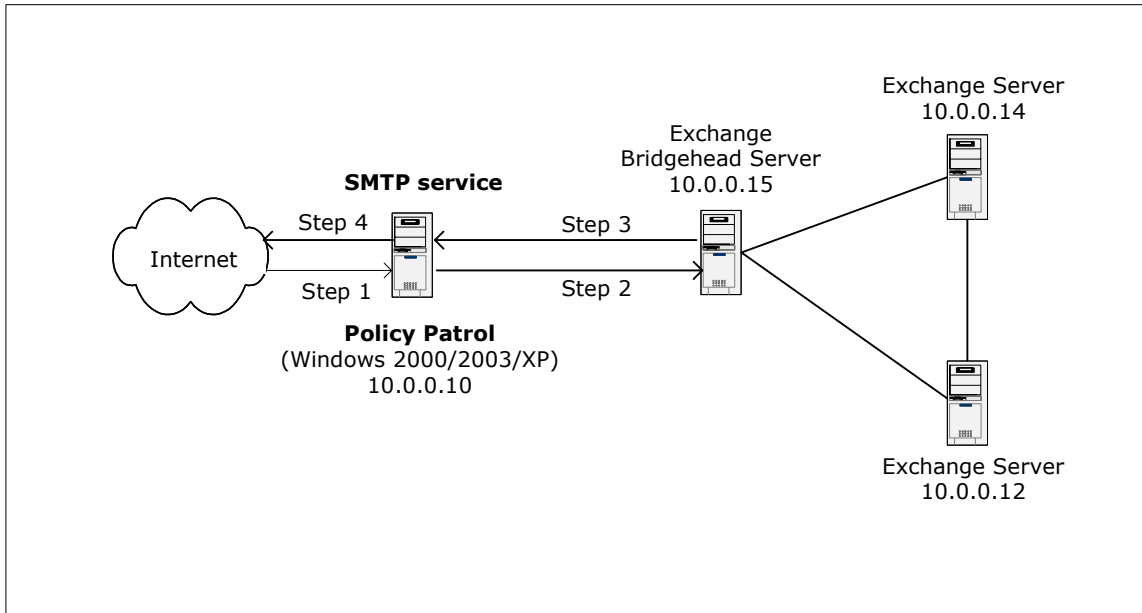
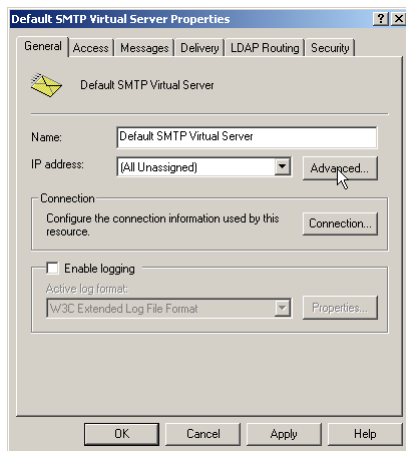


Figure 4 - Policy Patrol processes inbound and outbound mail for the Exchange bridgehead server

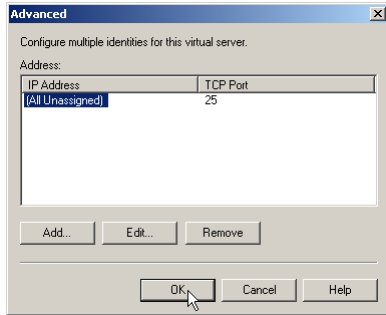
Step 1. Direct incoming mail to the SMTP service on the Policy Patrol machine

Direct your incoming mail to the Windows SMTP service on the Policy Patrol machine (the external DNS servers for your domain must have an mx (mail exchanger) record pointing to the Policy Patrol machine). Furthermore, check the following settings in the Default SMTP Virtual Server:

- On the Policy Patrol machine, go to **Start > Settings > Control Panel > Administrative Tools > Internet Services Manager**.
- Right-click **Default SMTP Virtual Server**, and click **Properties**.
- In the **General** Tab, verify that your IP address is listed as **(All Unassigned)**.

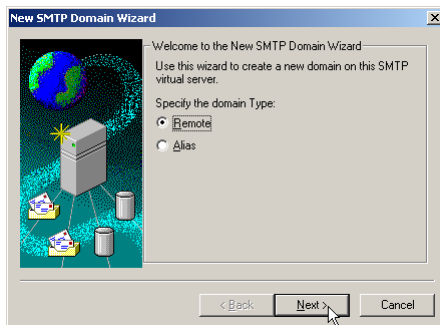


- Click on the **Advanced** button. Verify that the TCP Port is set to 25. Click **OK**.

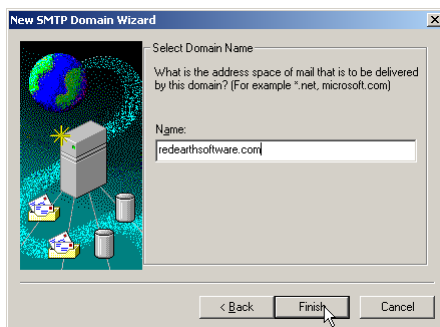


Step 2. Forward mails from the SMTP service to the bridgehead server

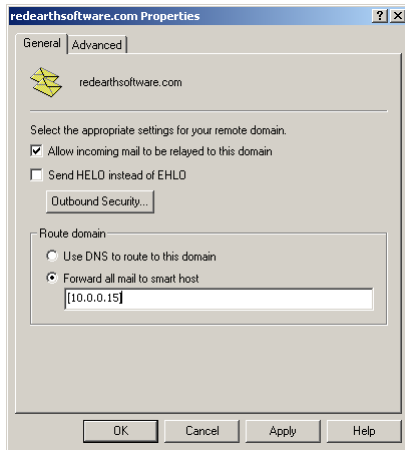
- In the Internet Services Manager, go to **Default SMTP Virtual Server > Domains**.
- Right-click **Domains** and select **New > Domain**.
- The New SMTP Domain Wizard will start up. Select **Remote** and click **Next**.



- Enter the domain name, for instance `redearthsoftware.com`. Click **Finish**.



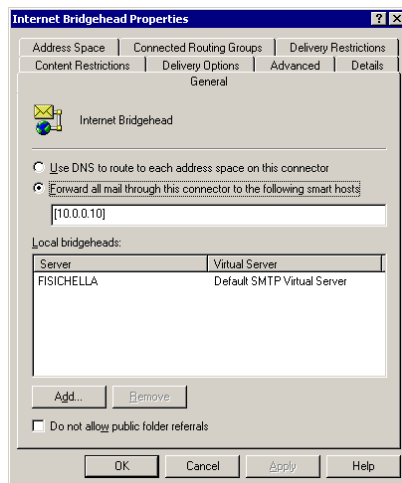
- Select the newly created domain. Right-click and choose **Properties > General Tab**.



- Tick **Allow incoming mail to be relayed to this domain**. In the 'Route domain' section, select **Forward all mail to smart host** and enter the internal IP address (can be the same as the external IP address) of the Bridgehead Exchange Server in between square brackets, e.g. [10.0.0.15] as per Figure 4. Click **OK**. If you use multiple email domains, repeat step 2 for each email domain.

Step 3. Forward your mails from the bridgehead server to the SMTP service

- Open the **Exchange System Manager** and expand the **Connectors** node.
- Right-click **<SMTP Connector name>** and select **Properties**.

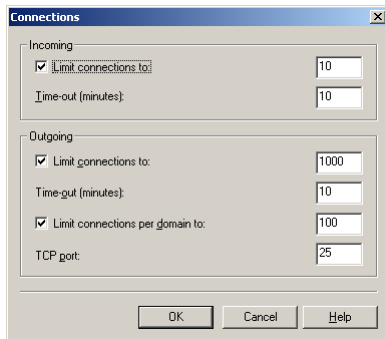


- In the **General** Tab, select **Forward all mail through this connector to the following smart hosts** and enter the IP address of the Policy Patrol machine in square brackets, e.g. [10.0.0.10] as per Figure 4. Click **OK**.

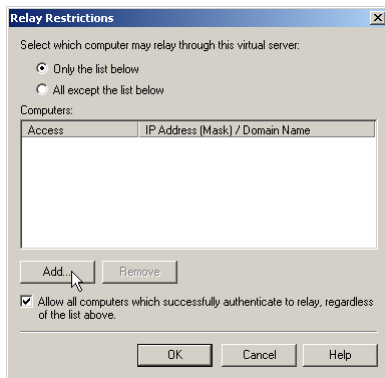
Step 4. Configure the SMTP service to send out mails to the Internet

- On the Policy Patrol machine, go to **Start > Settings > Control Panel > Administrative Tools > Internet Services Manager**.

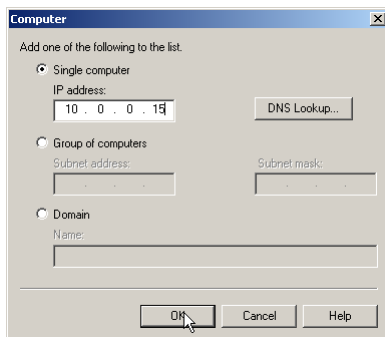
- Right-click **Default SMTP Virtual Server** and select **Properties**.
- In the **General** tab, click on the **Connection** button. Verify that in the 'Outgoing' section, the TCP port is set to 25. Click **OK**.



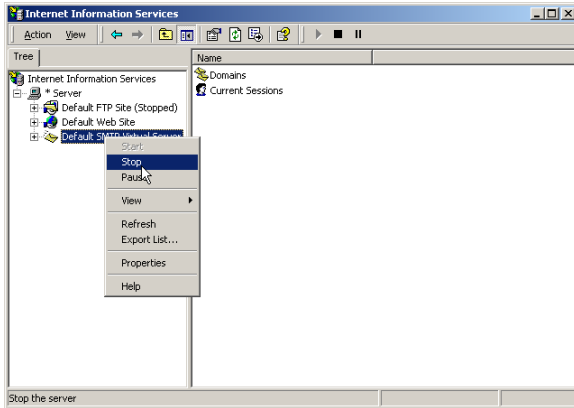
- Go to the **Access** tab and click on the **Relay** button. Select the option **Only the list below** and click on **Add**.



- Enter the internal IP address (can be the same as the external IP address) of the bridgehead server in the **Single computer** dialog (in Figure 4 this is 10.0.0.15) and click **OK**. Note: By entering the IP address of the Exchange bridgehead server here, you are effectively blocking relaying for all other machines apart from the bridgehead server, therefore ensuring that your relay server cannot be used for spamming.



- Right-click **Default SMTP Virtual Server** and choose **Stop**. Then right-click again and choose **Start**.



You are now ready to start configuring rules in Policy Patrol to filter all your mails.

Scenario 2: Policy Patrol processes only outbound mail

If you only require Policy Patrol to process outbound mails (for instance if you only want to add a disclaimer to outgoing messages), you just need to forward outbound mails to the Windows SMTP service on the Policy Patrol machine, as per Figure 5 below. Your inbound mails will still arrive directly at your bridgehead server. To configure Policy Patrol to process your outbound mails, follow the next steps:

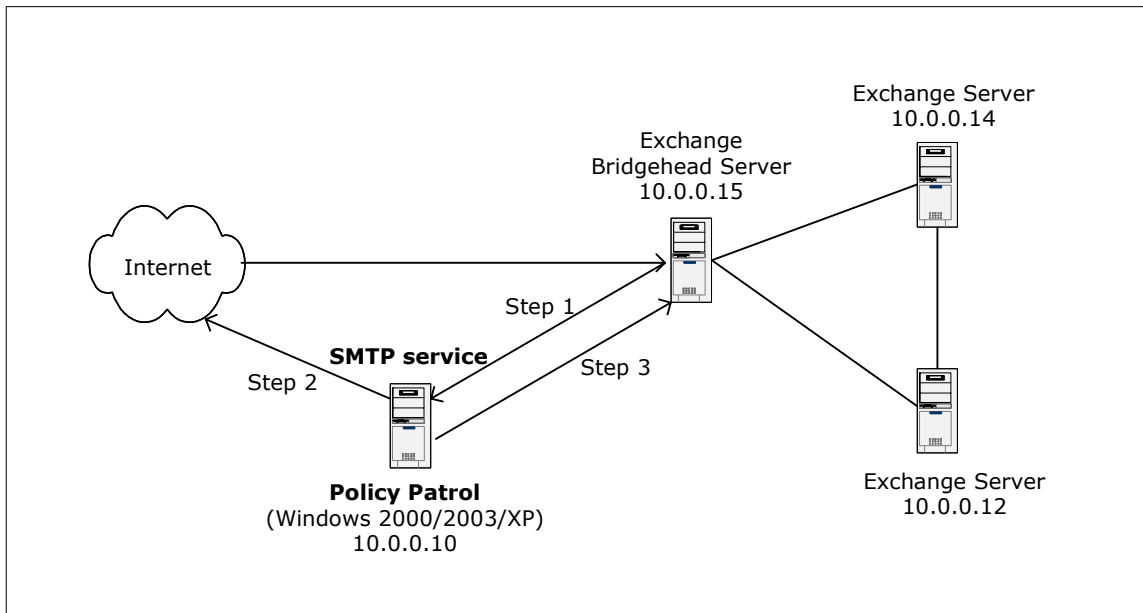
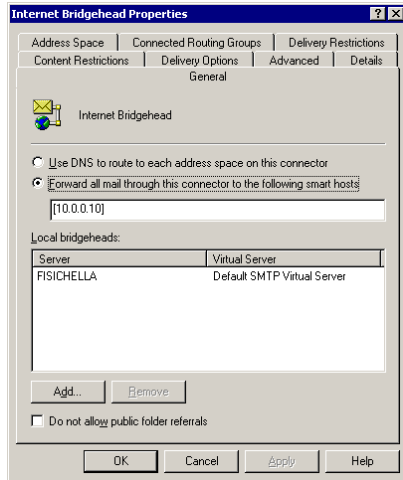


Figure 5 - Policy Patrol processes outbound mail from the Exchange bridgehead server

Step 1. Forward your mails from the bridgehead server to the SMTP service

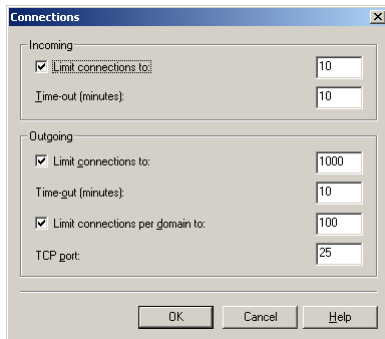
- Open the **Exchange System Manager** and expand the **Connectors** node.
- Right-click **<SMTP Connector name>** and select **Properties**.



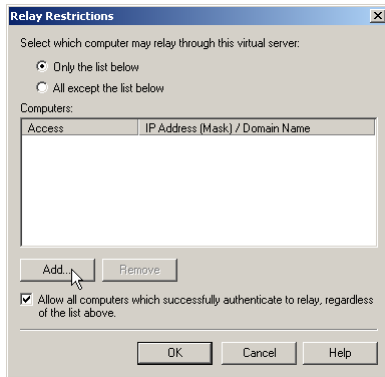
- In the **General** Tab, select **Forward all mail through this connector to the following smart hosts** and enter the IP address of the Policy Patrol machine in square brackets, e.g. [10.0.0.10] as per Figure 5. Click **OK**.

Step 2. Configure the SMTP service to send out mails to the Internet

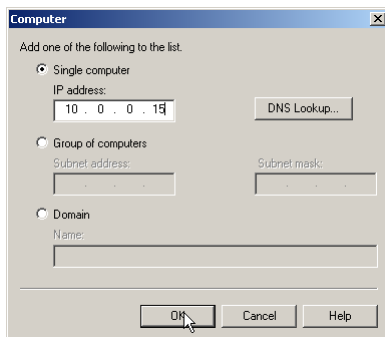
- On the Policy Patrol machine, go to **Start > Settings > Control Panel > Administrative Tools > Internet Services Manager**.
- Right-click **Default SMTP Virtual Server** and select **Properties**.
- In the **General** tab, click on the **Connection** button. Verify that in the 'Outgoing' section, the TCP port is set to 25. Click **OK**.



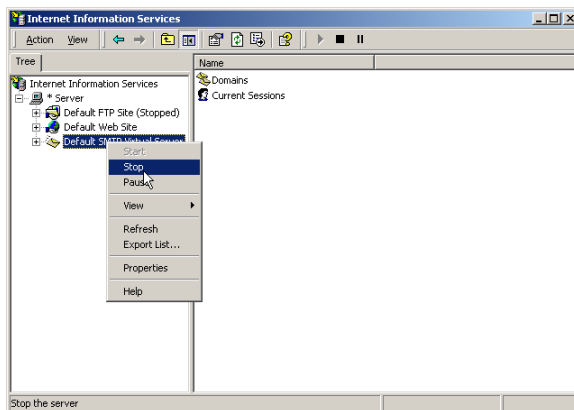
- Go to the **Access** tab and click on the **Relay** button. Select the option **Only the list below** and click on **Add**.



- Enter the internal IP address (can be the same as the external IP address) of the bridgehead server machine in the **Single computer** dialog (in Figure 5 this is 10.0.0.15) and click **OK**. Note: By entering the IP address of the bridgehead server here, you are effectively blocking relaying for all other machines apart from the bridgehead server, therefore ensuring that your relay server cannot be used for spamming.



- Right-click **Default SMTP Virtual Server** and choose **Stop**. Then right-click again and choose **Start**.

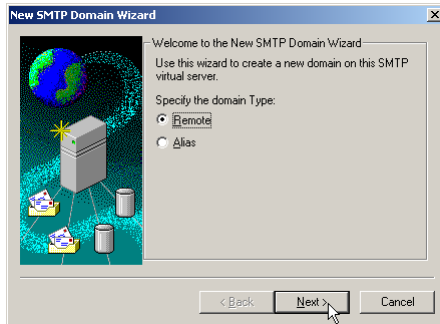


Step 3. Forward NDRs from the SMTP service to the bridgehead server

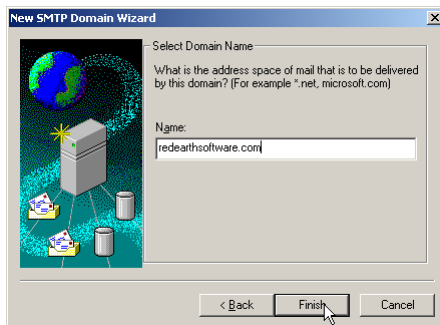
If the SMTP service cannot deliver a particular message, the Non-delivery messages must be routed back to the bridgehead server. Therefore you must configure the SMTP service

to forward messages to the bridgehead server. In this setup, the only messages that will be forwarded are Non-delivery messages.

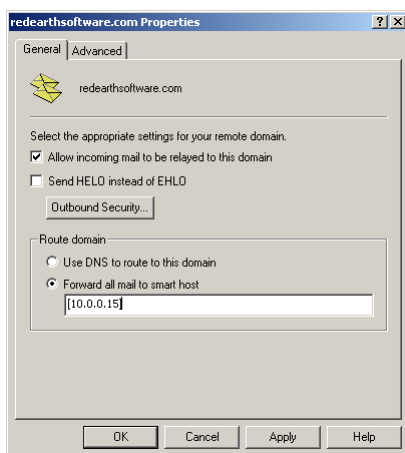
- In the Internet Services Manager, go to **Default SMTP Virtual Server > Domains**.
- Right-click **Domains** and select **New > Domain**.
- The New SMTP Domain Wizard will start up. Select **Remote** and click **Next**.



- Enter the domain name, for instance `redearthsoftware.com`. Click **Finish**.



- Select the newly created domain. Right-click and choose **Properties > General Tab**.



- Tick **Allow incoming mail to be relayed to this domain**. In the 'Route domain' section, select **Forward all mail to smart host** and enter the internal address (can

be the same as the external IP address) of the bridgehead server in between square brackets, e.g. [10.0.0.15] as per Figure 5. Click **OK**. If you use multiple email domains, repeat step 3 for each Exchange email domain.

You are now ready to start configuring rules in Policy Patrol to filter outbound mails.

Scenario 3: Policy Patrol processes only inbound mail

If you only want Policy Patrol to process inbound mails (for instance to stop spam), you just need to forward incoming mails to the Windows SMTP service on the Policy Patrol machine, as per Figure 6 below. Outgoing mails will continue to be sent out by the bridgehead server. To configure Policy Patrol to process your inbound mails, follow the next steps:

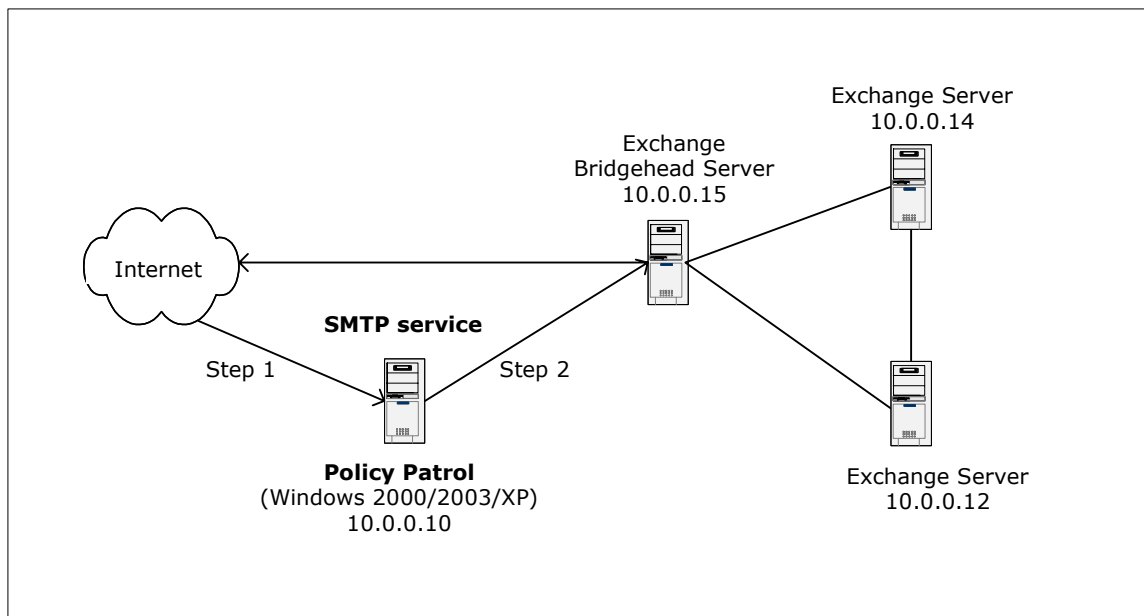
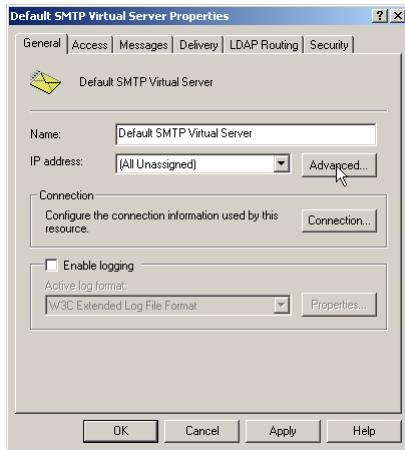


Figure 6 - Policy Patrol processes inbound mail for the Exchange bridgehead server

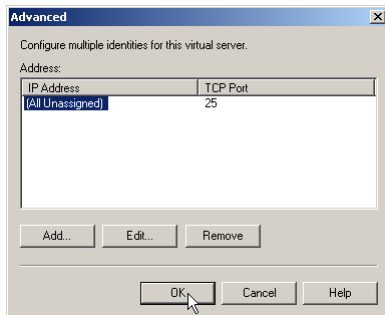
Step 1. Direct incoming mail to the SMTP service on the Policy Patrol machine

Direct your incoming mail to the Windows SMTP service on the Policy Patrol machine (the external DNS servers for your domain must have an mx (mail exchanger) record pointing to the Policy Patrol machine). Furthermore, check the following settings in the Default SMTP Virtual Server:

- On the Policy Patrol machine, go to **Start > Settings > Control Panel > Administrative Tools > Internet Services Manager**.
- Right-click **Default SMTP Virtual Server**, and click **Properties**.
- In the **General** Tab, verify that your IP address is listed as **(All Unassigned)**.

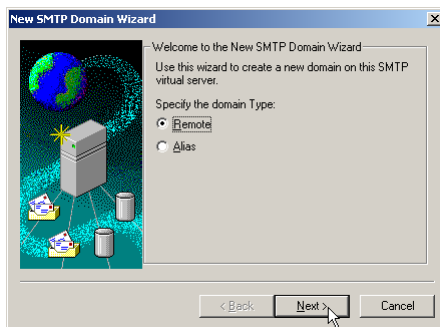


- Click on the **Advanced** button. Verify that the TCP Port is set to 25. Click **OK**.

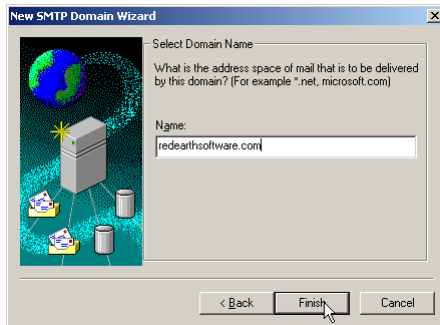


Step 2. Forward mails from the SMTP service to the bridgehead server

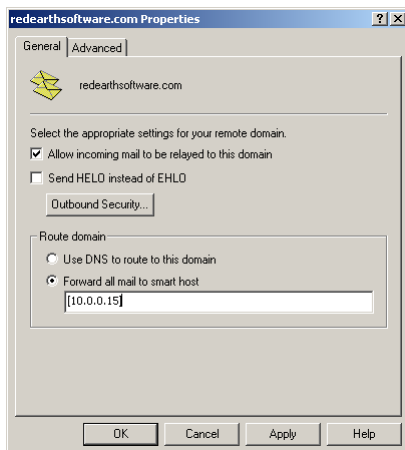
- In the Internet Services Manager, go to **Default SMTP Virtual Server > Domains**.
- Right-click **Domains** and select **New > Domain**.
- The New SMTP Domain Wizard will start up. Select **Remote** and click **Next**.



- Enter the domain name, for instance `reearthsoftware.com`. Click **Finish**.



- Select the newly created domain. Right-click and choose **Properties > General Tab**.



- Tick **Allow incoming mail to be relayed to this domain**. In the 'Route domain' section, select **Forward all mail to smart host** and enter the internal IP address (can be the same as the external IP address) of the bridgehead server in between square brackets, e.g. [10.0.0.15] as per Figure 6. Click **OK**. If you use multiple email domains, repeat step 2 for each email domain.

You are now ready to start configuring rules in Policy Patrol to filter inbound mails.

More information

- ⇒ For more information on how to configure Policy Patrol, please consult the program help or download the product manual from: <http://www.policypatrol.com/docs/policypatrol3manual.pdf>.
- ⇒ If you deploy a Demilitarized Zone (DMZ) and wish to use real-time black lists, please download the following document for further instructions: <http://www.policypatrol.com/docs/Using-Spam-blocker-in-a-DMZ.pdf>.
- ⇒ For more information on relaying your mail through the Windows SMTP service, consult the following Microsoft Knowledge Base article 'XCON: How to set up Windows 2000 as an SMTP Relay Server or Smart Host' at: <http://support.microsoft.com/default.aspx?scid=kb;en-us;293800>.
- ⇒ If you still have questions after reading this document, please consult our online knowledge base at <http://www.redearthsoftware.com/kb.asp>, or send an email to support@redearthsoftware.com.

Contacting Red Earth Software

Red Earth Software LLC
200 Marcy Street
Portsmouth, NH 03801
United States
Phone: (603) 436-1319
Fax: (603) 457-8455
Sales: sales@reearthsoftware.com
Support: support@reearthsoftware.com

Red Earth Software (UK) Ltd
20 Market Place
Kingston-upon-Thames
Surrey KT1 1JP
United Kingdom
Tel: +44-(0)20-8605 9074
Fax: +44-(0)20-8605 9075
Sales: sales@reearthsoftware.co.uk
Support: support@reearthsoftware.co.uk

Policy Patrol® is a registered trademark of Red Earth Software®. Copyright © 2001- 2004 by Red Earth Software.