

Installing Policy Patrol on a separate machine

If you have Microsoft Exchange Server 2000 or 2003 it is recommended to install Policy Patrol on the same machine, since this will allow you to filter your internal mails. However, if you prefer you can also install Policy Patrol on a separate machine. In this case you will need to forward your mails to the Windows SMTP service on the Policy Patrol machine. If installed on a separate machine, Policy Patrol will offer all functionality, apart from internal mail filtering. This is because internal emails will not pass through Policy Patrol if it is not installed on the Exchange 2000/2003 machine.

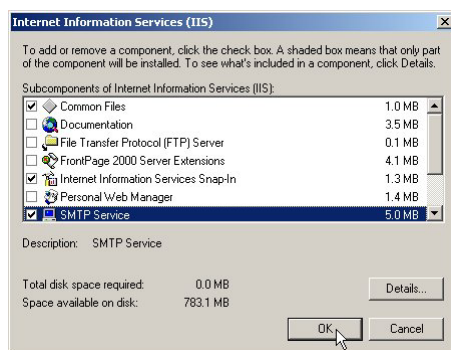
To install Policy Patrol on a separate machine, follow the steps described below.

Step 1. Preparing for installation

System requirements

Before you install Policy Patrol make sure that the following is installed on the machine:

1. Windows 2000 Professional/Server/Advanced Server, Windows Server 2003 or Windows XP Professional.
2. Windows SMTP service (part of Internet Information Services): This is installed by default on Windows 2000 (Advanced) Server and is an option on Windows Server 2003, Windows 2000 Professional and Windows XP Professional. To install the SMTP service, go to **Start > Settings > Control Panel > Add/Remove Programs > Add/Remove Windows Components**. Select **Internet Information Services** and click on **Details**. Check **SMTP service**. Any other required components are checked automatically. Click **OK**. Click **Next** to install the SMTP service.

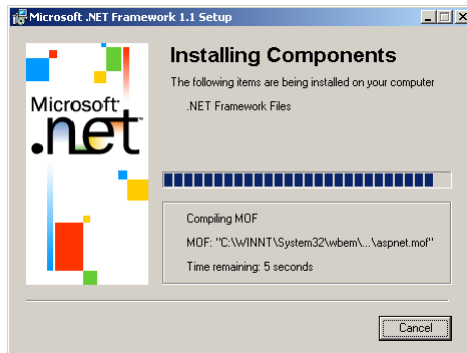


- Microsoft .NET Framework 1.1: If you do not have Microsoft .NET Framework 1.1 installed, the installation program will install it for you (if the Policy Patrol download included the .NET Framework), or download and then install it for you (if the Policy Patrol download did not include the .NET Framework).

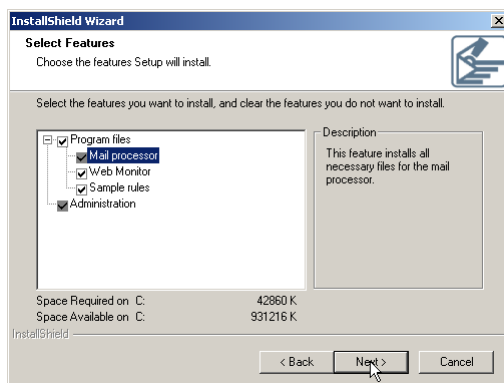
Step 2. Install Policy Patrol

Now install Policy Patrol according to the instructions below:

1. Double-click on **PolicyPatrol.exe**. The Install Program will start up. If you do not have Microsoft .NET Framework 1.1 installed, the installation program will install it for you (if the Policy Patrol download included the .NET Framework), or download and then install it for you (if the Policy Patrol download did not include the .NET Framework).

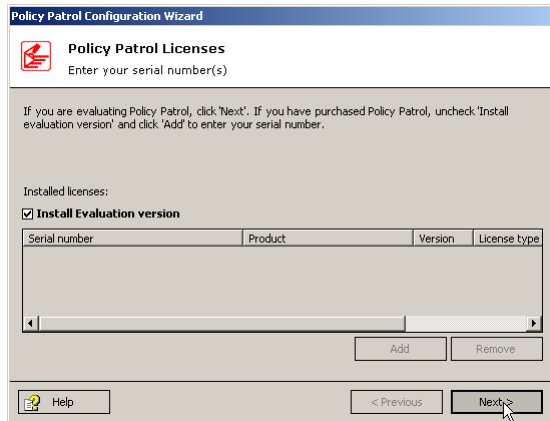


2. In the welcome screen, click **Next**.
3. Read the License Agreement and click **Yes** to accept the agreement.
4. Enter your user name and company name. If you want anyone who is logged on to the computer to be able to access Policy Patrol, select **Anyone who uses this computer (all users)**. If you only wish yourself to be able to access the program, select **Only for me (user name)**. Click **Next**.
5. Select the setup type. If you select **Complete**, the complete program will be installed in the default folder C:\Program Files\Red Earth Software\Policy Patrol. If you select **Custom**, you will be able to change the location of the Policy Patrol folder and specify whether you wish to install the mail processor, Administration console, Web monitor and/or sample rules. Click **Next** to continue.

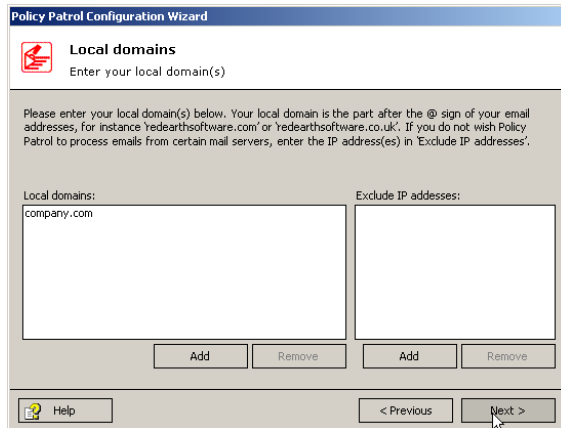


6. Specify the user account that must be used for synchronization. Make sure that this account has access rights to the Active Directory. Click **Next**.

7. Review the installation settings. If they are correct, click **Next** to start copying files.
8. When Policy Patrol has finished copying the files, the Policy Patrol Configuration wizard will start up. In the welcome screen, click **Next** to start the wizard.
9. If you are evaluating Policy Patrol, click **Next**. If you have purchased Policy Patrol, uncheck **Install evaluation version** and click **Add**. Enter your serial number and click **OK**. If you received your serial number via email, you can copy the serial number from your email and click on the 'Paste' button. Click **Next** to continue.

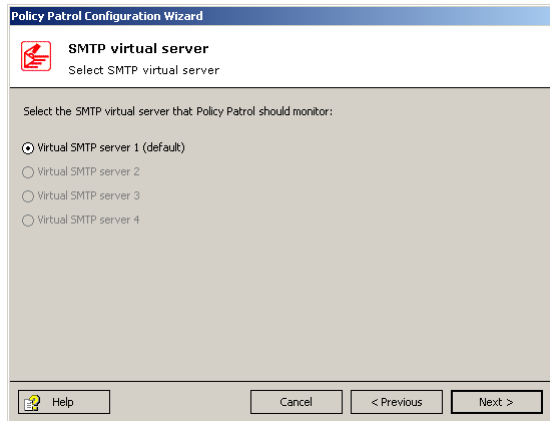


10. Enter your local domain(s). Your local domain is the part after the @ sign of your email address, for instance `redearthsoftware.com`. To add a local domain, click on **Add**. Enter the domain, for instance `redearthsoftware.com`, and click **OK**. To remove a local domain, click **Remove**.

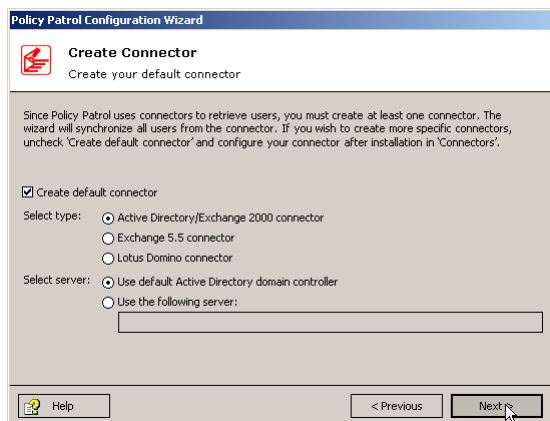


If you do not wish Policy Patrol to process emails from certain mail servers, enter the IP addresses in **Exclude IP addresses**. Click on **Add**, enter the IP address and click **OK**. When you are ready, click **Next**.

11. Select the virtual SMTP server that you wish Policy Patrol to monitor. If you only have one virtual SMTP server, the other options will be grayed out. Click **Next**.



12. Enter the email address(es) for the Policy Patrol Administrator. These addresses will be used for Policy Patrol system notifications and Administrator notifications configured in rules. You can enter a To:, Cc: and Bcc: email address. Remember that the From: field must include an existing, internal email address. Click **Next**.
13. You must configure at least one connector so that Policy Patrol can retrieve your users. Select **Active Directory/Exchange 2000 connector**. You can either use the default Active Directory domain controller, or you can enter the name or IP address of another domain controller.

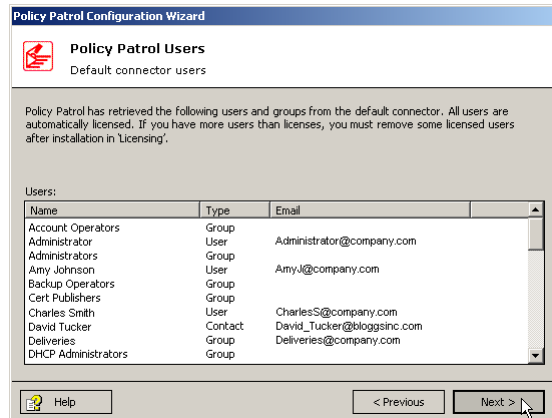


Policy Patrol will synchronize all users from the connector. If you wish to create a more specific connector, uncheck **Create default connector**. You will then be able to configure your connector after installation in 'Connectors'. If you wish to use multiple connectors you can create the default connector during installation, and add more connectors in the Administration console after installation. When you are ready, click **Next**.

Note: The Default connector is not **scheduled**. If you want Policy Patrol to automatically retrieve new users and updated user properties, you must configure scheduling of the Default connector after installation from **Connectors > Default connector > Properties > Schedule** tab.

14. Policy Patrol will now display all the users from the default connector. All users will automatically be licensed. If you have more users than licenses, you must remove

some licensed users after installation in 'Licensing', since otherwise Policy Patrol will select the licensed users randomly. Click **Next**.



15. If you wish the Administrator to receive an email notification when a new Policy Patrol update is available, check the option **Enable automatic update notifications**. In addition to an email notification, the Policy Patrol Update Wizard icon will appear in the system tray. Note that this option requires an Internet connection on the Policy Patrol machine. Click **Next**.

16. If you wish to be able to administer Policy Patrol remotely, you must tick the check box **Enable Remote Administration**. Enter the TCP port to use. By default 8000 is used. If you have multiple Policy Patrol installations that you wish to access remotely, each installation must use a different port. Select **Publish installation** to display the computer in a list that can be connected to from the remote machine.

17. Click **Finish** to exit the configuration wizard.

Step 3. Configure Policy Patrol as a mail gateway

Before Policy Patrol can actually filter your emails, you must ensure that your mail flows through Policy Patrol. The following deployment scenarios are possible:

- Scenario 1: Policy Patrol processes inbound and outbound mail
- Scenario 2: Policy Patrol processes only outbound mail
- Scenario 3: Policy Patrol processes only inbound mail

The instructions for each scenario differ depending on whether you have a single Exchange Server or a Bridgehead Exchange Server topology.

Topology A: If you have a single Exchange Server

If you are running a single Exchange Server, select the scenario that applies to your needs and follow the instructions below.

Scenario 1: Policy Patrol processes inbound and outbound mails

If you want Policy Patrol to filter all your mails, you will need to route all mail through the Windows SMTP service on the Policy Patrol machine, as per Figure 1 below. To do this, follow the next instructions:

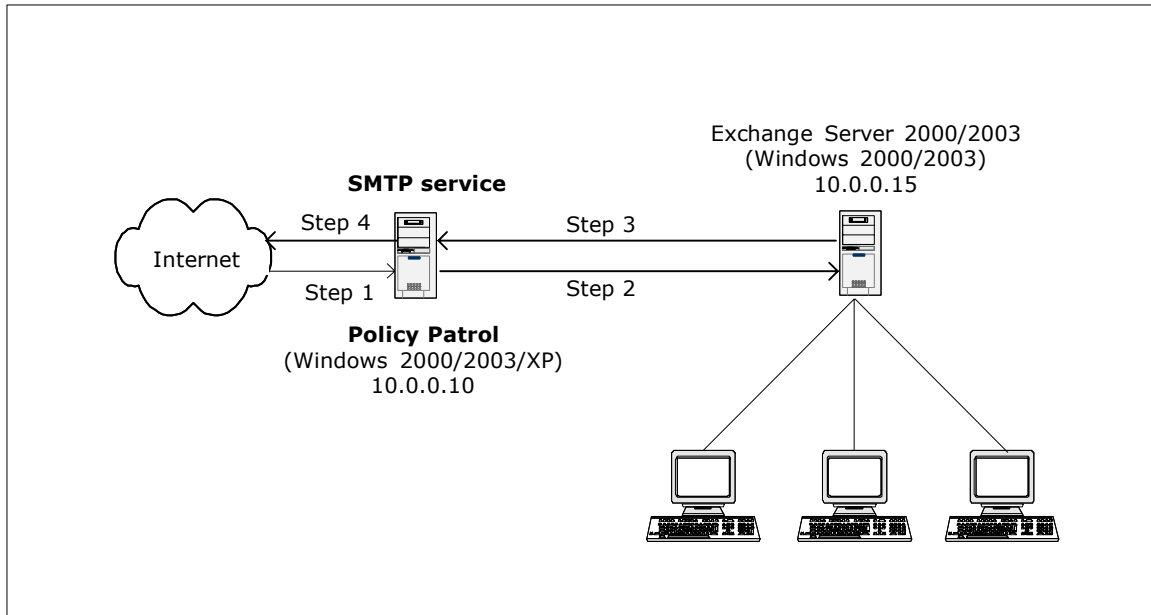
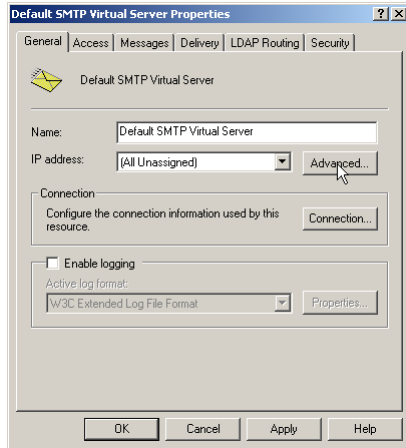


Figure 1 - Policy Patrol processes inbound and outbound mail

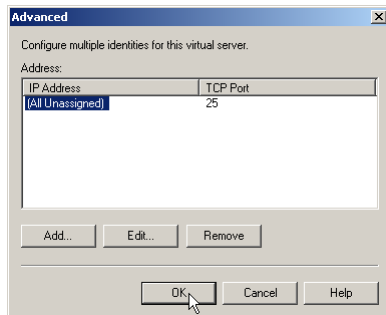
Step 1. Direct incoming mail to the SMTP service on the Policy Patrol machine

Direct your incoming mail to the Windows SMTP service on the Policy Patrol machine (the external DNS servers for your domain must have an mx (mail exchanger) record pointing to the Policy Patrol machine). Furthermore, check the following settings in the Default SMTP Virtual Server:

- On the Policy Patrol machine, go to **Start > Settings > Control Panel > Administrative Tools > Internet Services Manager**.
- Right-click **Default SMTP Virtual Server**, and click **Properties**.
- In the **General** Tab, verify that your IP address is listed as **(All Unassigned)**.

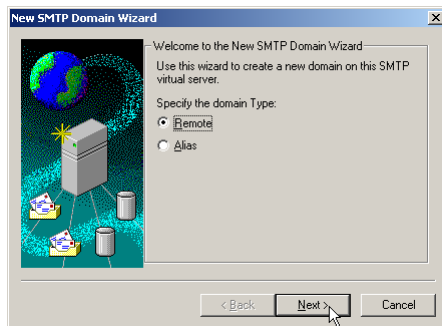


- Click on the **Advanced** button. Verify that the TCP Port is set to 25. Click **OK**.

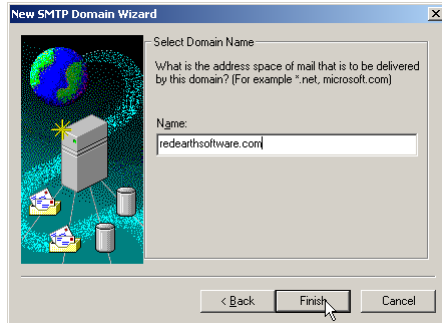


Step 2. Forward mails from the SMTP service to Exchange Server

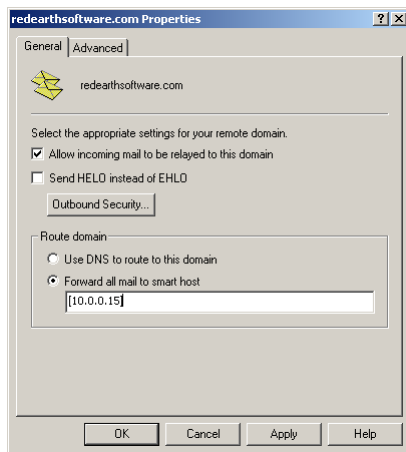
- In the Internet Services Manager, go to **Default SMTP Virtual Server > Domains**.
- Right-click **Domains** and select **New > Domain**.
- The New SMTP Domain Wizard will start up. Select **Remote** and click **Next**.



- Enter the domain name, for instance `redearthsoftware.com`. Click **Finish**.



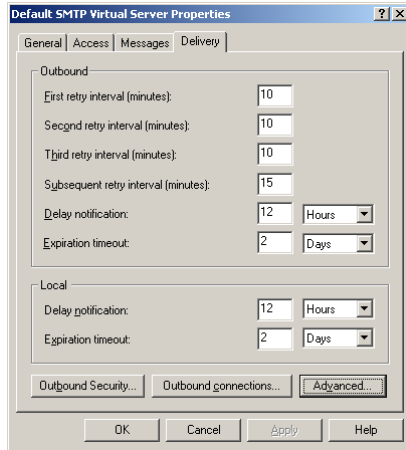
- Select the newly created domain. Right-click and choose **Properties > General Tab**.



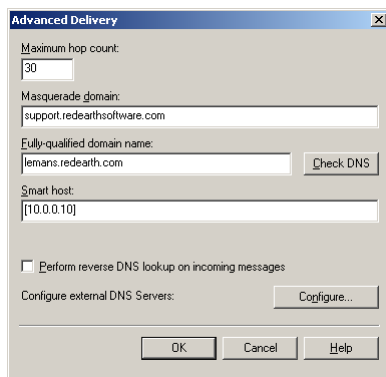
- Tick **Allow incoming mail to be relayed to this domain**. In the 'Route domain' section, select **Forward all mail to smart host** and enter the internal IP address (can be the same as the external IP address) of the Exchange Server in between square brackets, e.g. [10.0.0.15] as per Figure 1. Click **OK**. If you use multiple email domains, repeat step 2 for each email domain.

Step 3. Forward your mails from Exchange Server to the SMTP service

- On the Exchange Server machine, open the Exchange System Manager.
- Expand the **Servers** node. Double-click on **<Exchange Server name> > Protocols > SMTP**. Right-click **Default SMTP virtual server** and select **Properties**.
- Go to the **Delivery** Tab and click on the **Advanced** button.

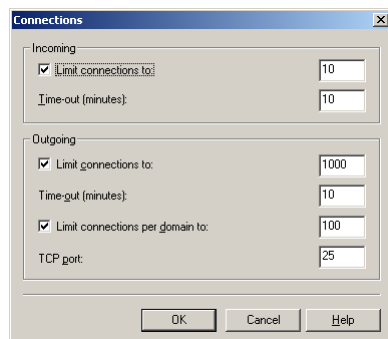


- In the **Smart host** dialog box, enter the IP address of the Policy Patrol machine in square brackets, e.g. [10.0.0.10], and click **OK**.

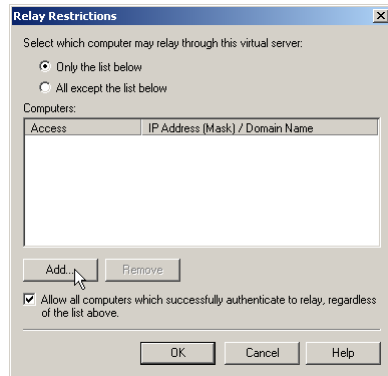


Step 4. Configure the SMTP service to send out mails to the Internet

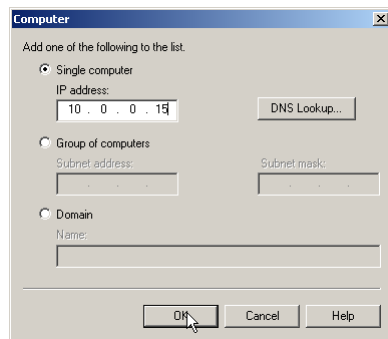
- On the Policy Patrol machine, go to **Start > Settings > Control Panel > Administrative Tools > Internet Services Manager**.
- Right-click **Default SMTP Virtual Server** and select **Properties**.
- In the **General** tab, click on the **Connection** button. Verify that in the 'Outgoing' section, the TCP port is set to 25. Click **OK**.



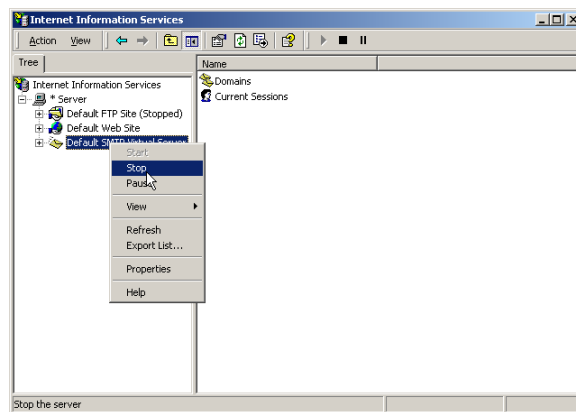
- Go to the **Access** tab and click on the **Relay** button. Select the option **Only the list below** and click on **Add**.



- Enter the internal IP address (can be the same as the external IP address) of the Exchange Server machine in the **Single computer** dialog (in Figure 1 this is 10.0.0.15) and click **OK**. Note: By entering the IP address of the Exchange Server here, you are effectively blocking relaying for all other machines apart from the Exchange Server, therefore ensuring that your relay server cannot be used for spamming.



- Right-click **Default SMTP Virtual Server** and choose **Stop**. Then right-click again and choose **Start**.



You are now ready to start configuring rules in Policy Patrol to filter all your mails.

Scenario 2: Policy Patrol processes only outbound mail

If you only require Policy Patrol to process outbound mails (for instance if you only want to add a disclaimer to outgoing messages), you just need to forward outbound mails to the Windows SMTP service on the Policy Patrol machine, as per Figure 2 below. Your inbound mails will still arrive directly at your Exchange Server. To configure Policy Patrol to process your outbound mails, follow the next steps:

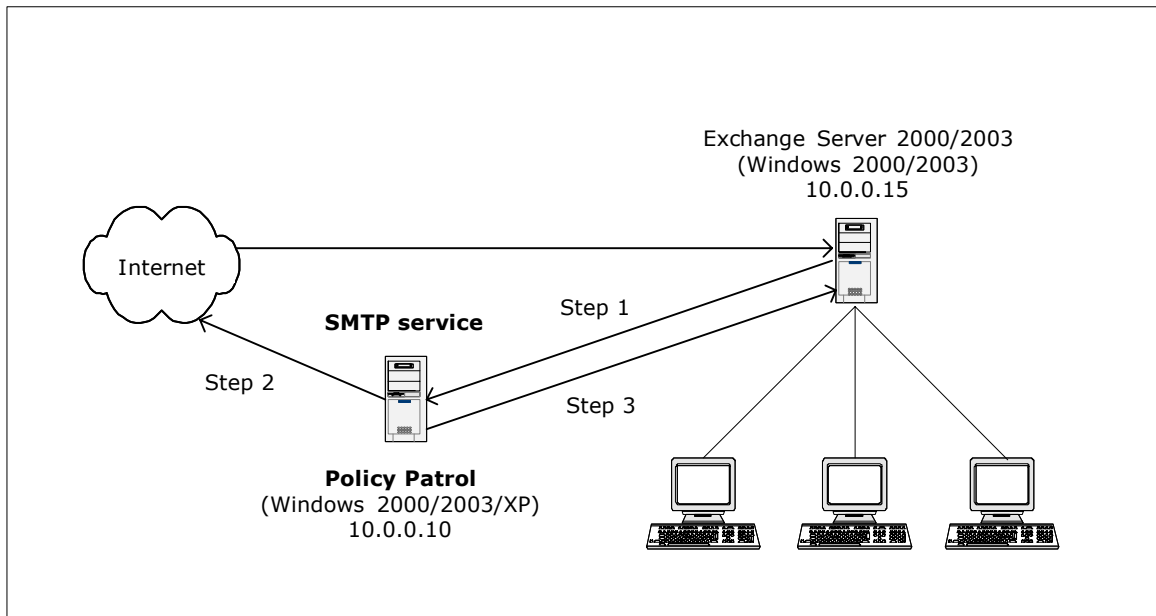
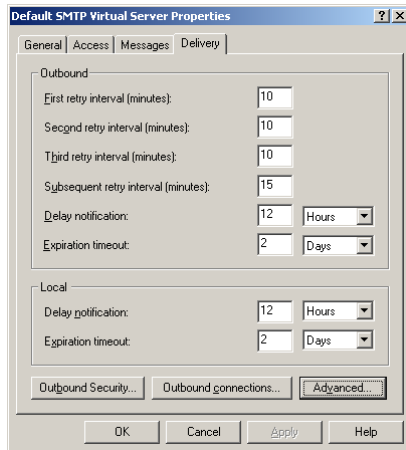


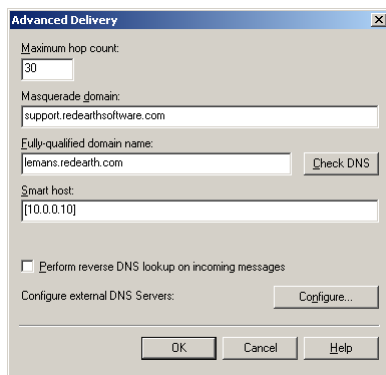
Figure 2 - Policy Patrol processes outbound mail

Step 1. Forward your mails from Exchange Server to the SMTP service

- On the Exchange Server machine, open the Exchange System Manager.
- Expand the **Servers** node. Double-click on **<Exchange Server name> > Protocols > SMTP**. Right-click **Default SMTP virtual server** and select **Properties**.
- Go to the **Delivery** Tab and click on the **Advanced** button.

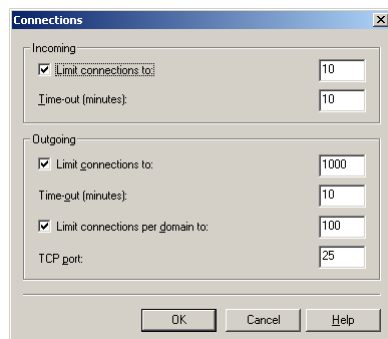


- In the **Smart host** dialog box, enter the IP address of the Policy Patrol machine in square brackets, e.g. [10.0.0.10], and click **OK**.

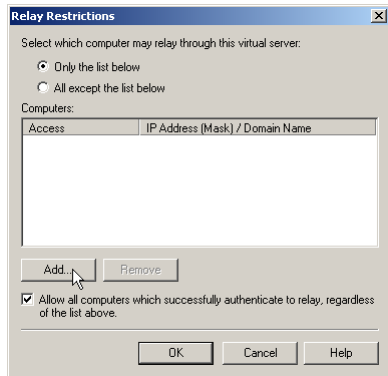


Step 2. Configure the SMTP service to send out mails to the Internet

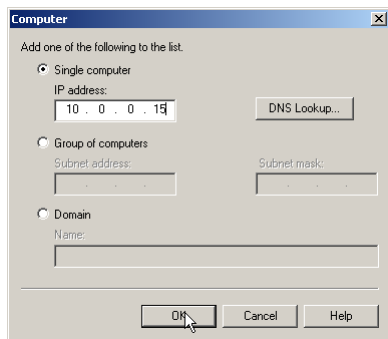
- On the Policy Patrol machine, go to **Start > Settings > Control Panel > Administrative Tools > Internet Services Manager**.
- Right-click **Default SMTP Virtual Server** and select **Properties**.
- In the **General** tab, click on the **Connection** button. Verify that in the 'Outgoing' section, the TCP port is set to 25. Click **OK**.



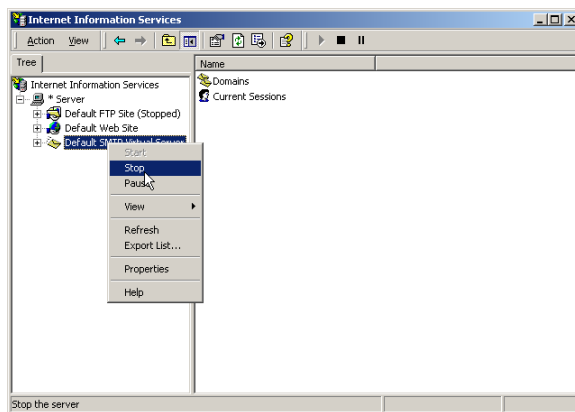
- Go to the **Access** tab and click on the **Relay** button. Select the option **Only the list below** and click on **Add**.



- Enter the internal IP address (can be the same as the external IP address) of the Exchange Server machine in the **Single computer** dialog (in Figure 2 this is 10.0.0.15) and click **OK**. Note: By entering the IP address of the Exchange Server here, you are effectively blocking relaying for all other machines apart from the Exchange Server, therefore ensuring that your relay server cannot be used for spamming.



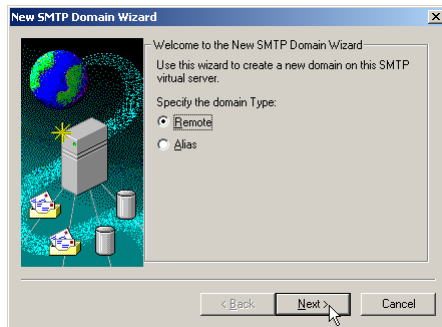
- Right-click **Default SMTP Virtual Server** and choose **Stop**. Then right-click again and choose **Start**.



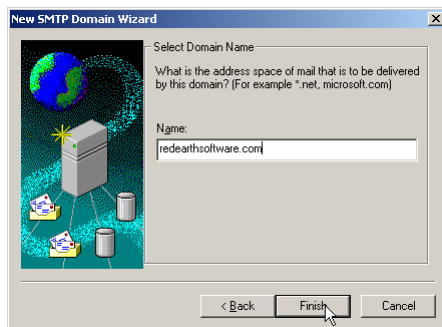
Step 3. Forward mails (NDRs) from the SMTP service to Exchange Server

If the SMTP service cannot deliver a particular message, the Non-delivery messages must be routed back to the Exchange Server. Therefore you must configure the SMTP service to forward messages to the Exchange Server. In this setup, the only messages that will be forwarded are Non-delivery messages.

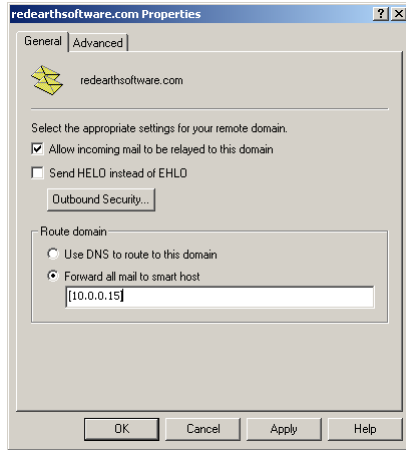
- In the Internet Services Manager, go to **Default SMTP Virtual Server > Domains**.
- Right-click **Domains** and select **New > Domain**.
- The New SMTP Domain Wizard will start up. Select **Remote** and click **Next**.



- Enter the domain name, for instance `reearthsoftware.com`. Click **Finish**.



- Select the newly created domain. Right-click and choose **Properties > General Tab**.
- Tick **Allow incoming mail to be relayed to this domain**. In the 'Route domain' section, select **Forward all mail to smart host** and enter the internal address (can be the same as the external IP address) of the Exchange Server in between square brackets, e.g. `[10.0.0.15]` as per Figure 2. Click **OK**. If you use multiple email domains, repeat step 3 for each email domain.



You are now ready to start configuring rules in Policy Patrol to filter outbound mails.

Scenario 3: Policy Patrol processes only inbound mail

If you only want Policy Patrol to process inbound mails (for instance to stop spam), you just need to forward incoming mails to the Windows SMTP service on the Policy Patrol machine, as per Figure 3 below. Outgoing mails will continue to be sent out by the Exchange Server. To configure Policy Patrol to process your inbound mails, follow the next steps:

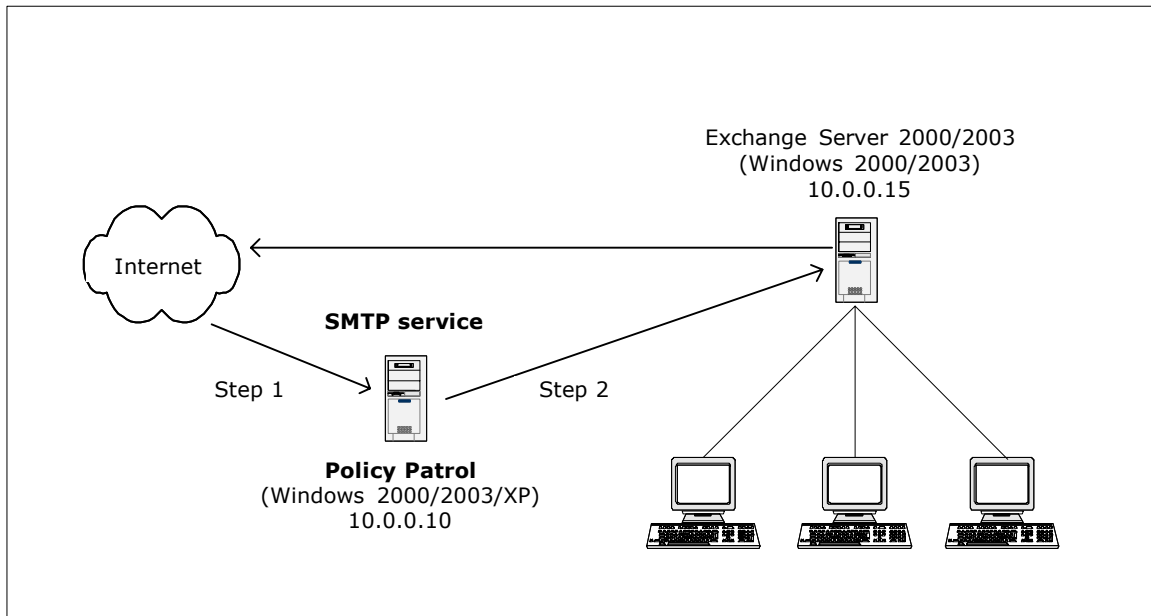
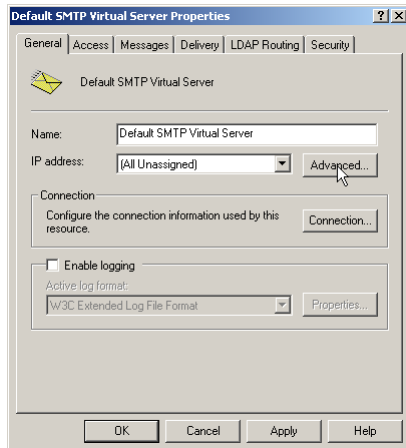


Figure 3 - Policy Patrol processes inbound mail

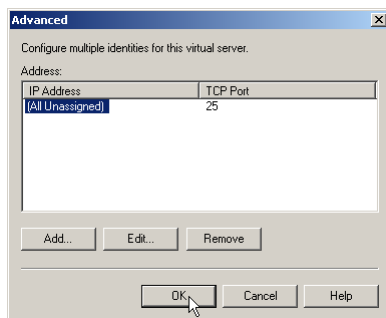
Step 1. Direct incoming mail to the SMTP service on the Policy Patrol machine

Direct your incoming mail to the Windows SMTP service on the Policy Patrol machine (the external DNS servers for your domain must have an mx (mail exchanger) record pointing to the Policy Patrol machine). Furthermore, check the following settings in the Default SMTP Virtual Server:

- On the Policy Patrol machine, go to **Start > Settings > Control Panel > Administrative Tools > Internet Services Manager**.
- Right-click **Default SMTP Virtual Server**, and click **Properties**.
- In the **General** Tab, verify that your IP address is listed as **(All Unassigned)**.

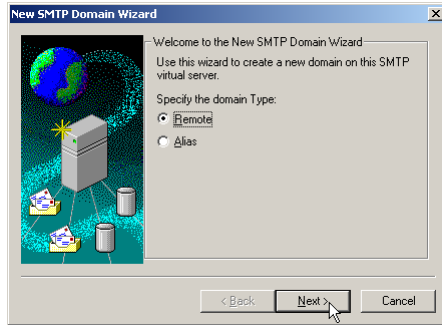


- Click on the **Advanced** button. Verify that the TCP Port is set to 25. Click **OK**.

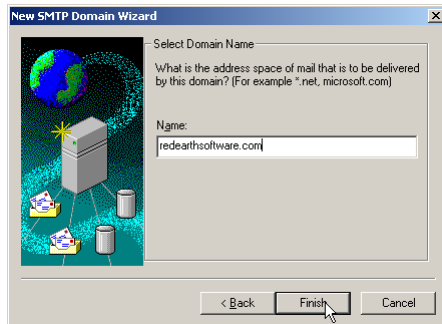


Step 2. Forward mails from the SMTP service to Exchange Server

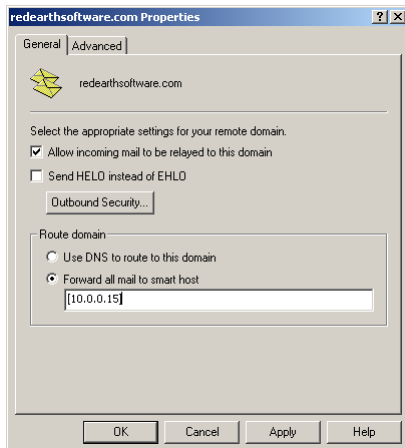
- In the Internet Services Manager, go to **Default SMTP Virtual Server > Domains**.
- Right-click **Domains** and select **New > Domain**.
- The New SMTP Domain Wizard will start up. Select **Remote** and click **Next**.



- Enter the domain name, for instance `redeathsoftware.com`. Click **Finish**.



- Select the newly created domain. Right-click and choose **Properties > General Tab**.
- Tick **Allow incoming mail to be relayed to this domain**. In the 'Route domain' section, select **Forward all mail to smart host** and enter the internal IP address (can be the same as the external IP address) of the Exchange Server in between square brackets, e.g. `[10.0.0.15]` as per Figure 3. Click **OK**. If you use multiple email domains, repeat step 2 for each email domain.



You are now ready to start configuring rules in Policy Patrol to filter inbound mails.

Topology B: If you have a Bridgehead Exchange Server

If you have deployed a bridgehead Exchange Server, select the scenario that applies to your needs and follow the instructions below.

Scenario 1: Policy Patrol processes inbound and outbound mails

If you want Policy Patrol to filter all your mails, you will need to route all mail through the Windows SMTP service on the Policy Patrol machine, as per Figure 4 below. To do this, follow the next instructions:

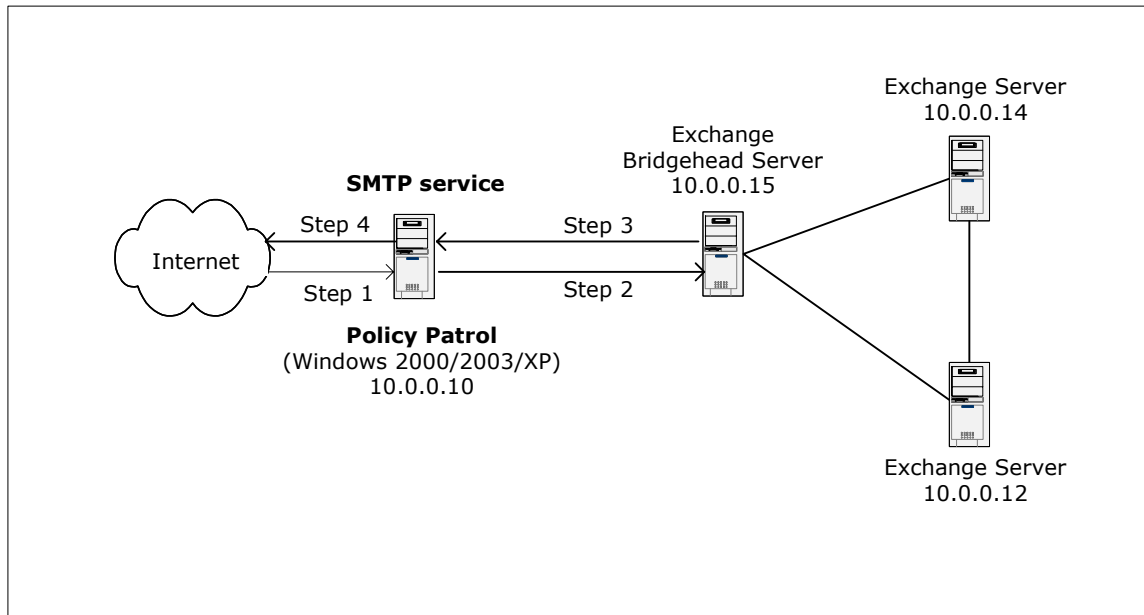
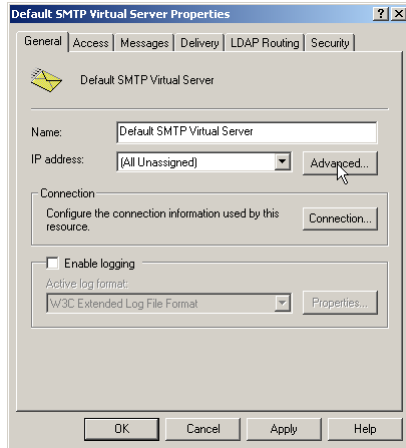


Figure 4 - Policy Patrol processes inbound and outbound mail for the Exchange bridgehead server

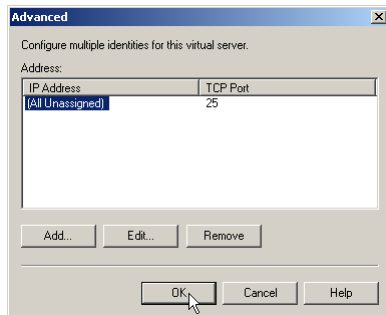
Step 1. Direct incoming mail to the SMTP service on the Policy Patrol machine

Direct your incoming mail to the Windows SMTP service on the Policy Patrol machine (the external DNS servers for your domain must have an mx (mail exchanger) record pointing to the Policy Patrol machine). Furthermore, check the following settings in the Default SMTP Virtual Server:

- On the Policy Patrol machine, go to **Start > Settings > Control Panel > Administrative Tools > Internet Services Manager**.
- Right-click **Default SMTP Virtual Server**, and click **Properties**.
- In the **General** Tab, verify that your IP address is listed as **(All Unassigned)**.

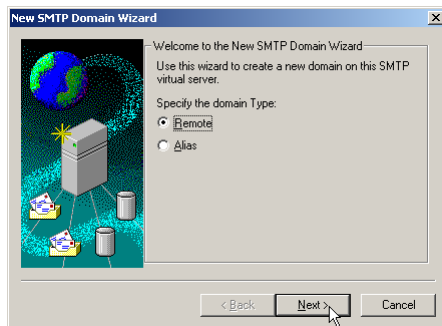


- Click on the **Advanced** button. Verify that the TCP Port is set to 25. Click **OK**.

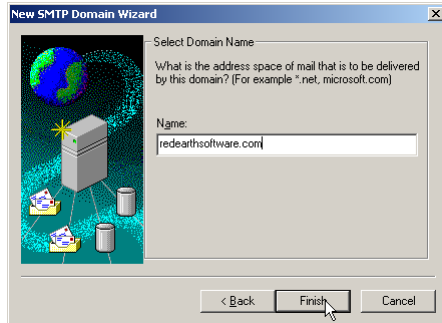


Step 2. Forward mails from the SMTP service to the bridgehead server

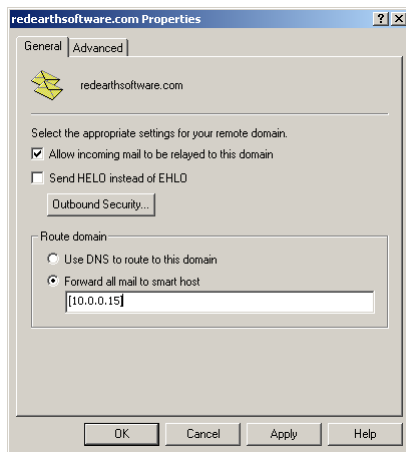
- In the Internet Services Manager, go to **Default SMTP Virtual Server > Domains**.
- Right-click **Domains** and select **New > Domain**.
- The New SMTP Domain Wizard will start up. Select **Remote** and click **Next**.



- Enter the domain name, for instance `redearthsoftware.com`. Click **Finish**.



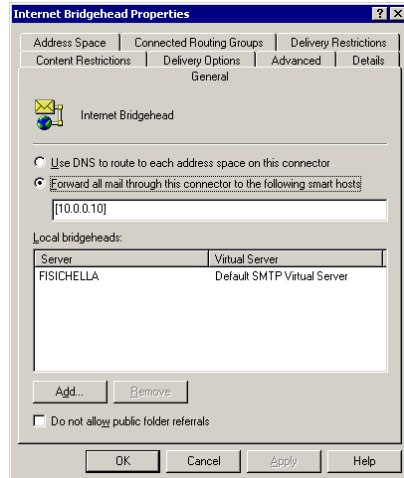
- Select the newly created domain. Right-click and choose **Properties > General Tab**.



- Tick **Allow incoming mail to be relayed to this domain**. In the 'Route domain' section, select **Forward all mail to smart host** and enter the internal IP address (can be the same as the external IP address) of the Bridgehead Exchange Server in between square brackets, e.g. [10.0.0.15] as per Figure 4. Click **OK**. If you use multiple email domains, repeat step 2 for each email domain.

Step 3. Forward your mails from the bridgehead server to the SMTP service

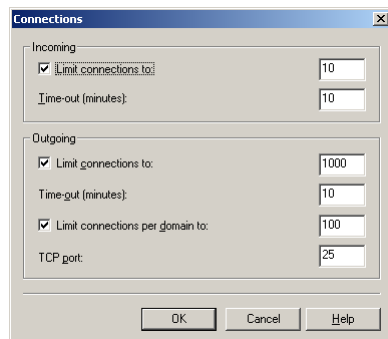
- Open the **Exchange System Manager** and expand the **Connectors** node.
- Right-click **<SMTP Connector name>** and select **Properties**.



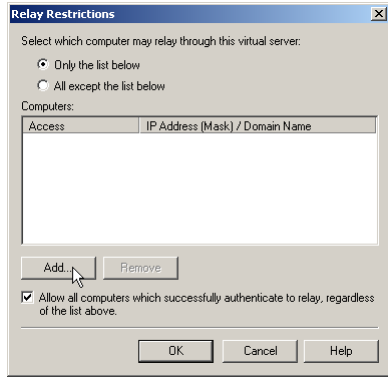
- In the **General** Tab, select **Forward all mail through this connector to the following smart hosts** and enter the IP address of the Policy Patrol machine in square brackets, e.g. [10.0.0.10] as per Figure 4. Click **OK**.

Step 4. Configure the SMTP service to send out mails to the Internet

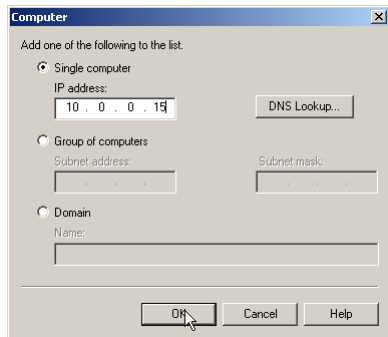
- On the Policy Patrol machine, go to **Start > Settings > Control Panel > Administrative Tools > Internet Services Manager**.
- Right-click **Default SMTP Virtual Server** and select **Properties**.
- In the **General** tab, click on the **Connection** button. Verify that in the 'Outgoing' section, the TCP port is set to 25. Click **OK**.



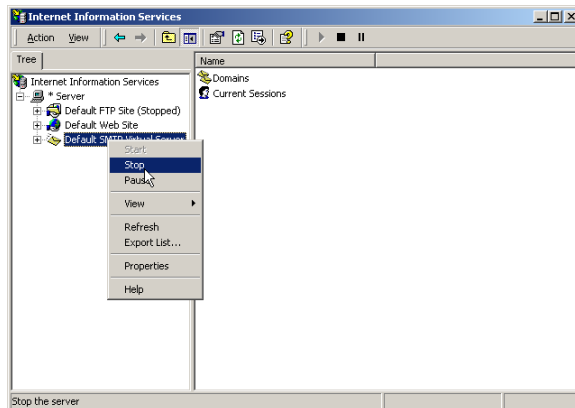
- Go to the **Access** tab and click on the **Relay** button. Select the option **Only the list below** and click on **Add**.



- Enter the internal IP address (can be the same as the external IP address) of the bridgehead server in the **Single computer** dialog (in Figure 4 this is 10.0.0.15) and click **OK**. Note: By entering the IP address of the Exchange bridgehead server here, you are effectively blocking relaying for all other machines apart from the bridgehead server, therefore ensuring that your relay server cannot be used for spamming.



- Right-click **Default SMTP Virtual Server** and choose **Stop**. Then right-click again and choose **Start**.



You are now ready to start configuring rules in Policy Patrol to filter all your mails.

Scenario 2: Policy Patrol processes only outbound mail

If you only require Policy Patrol to process outbound mails (for instance if you only want to add a disclaimer to outgoing messages), you just need to forward outbound mails to the Windows SMTP service on the Policy Patrol machine, as per Figure 5 below. Your inbound mails will still arrive directly at your bridgehead server. To configure Policy Patrol to process your outbound mails, follow the next steps:

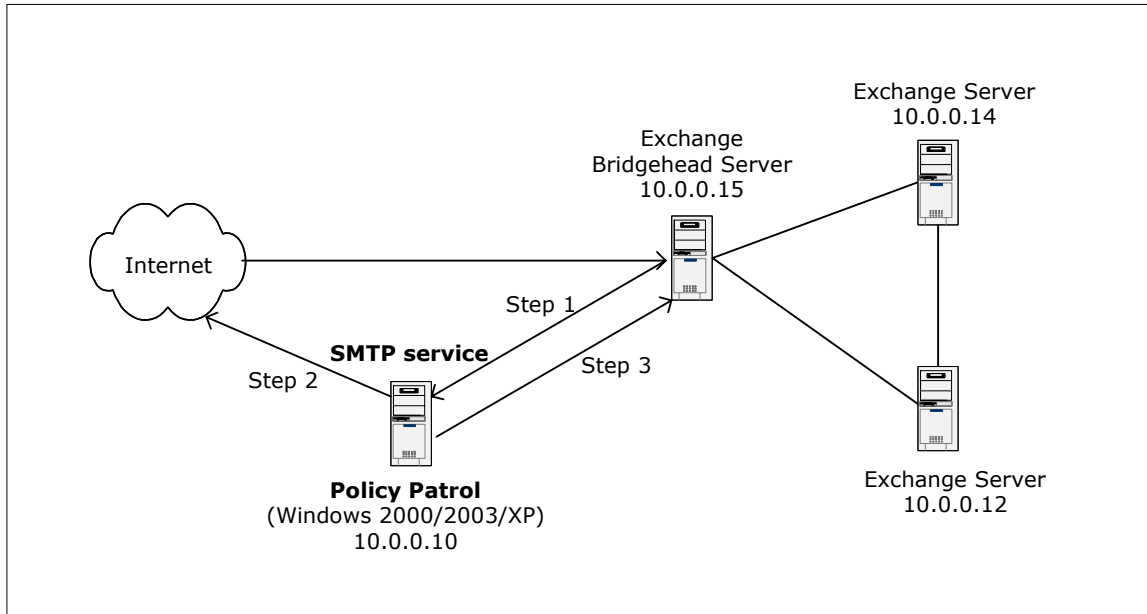
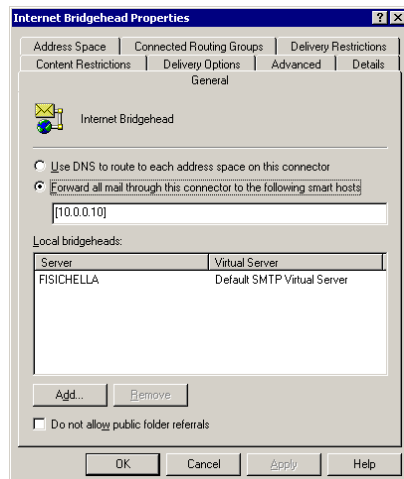


Figure 5 - Policy Patrol processes outbound mail from the Exchange bridgehead server

Step 1. Forward your mails from the bridgehead server to the SMTP service

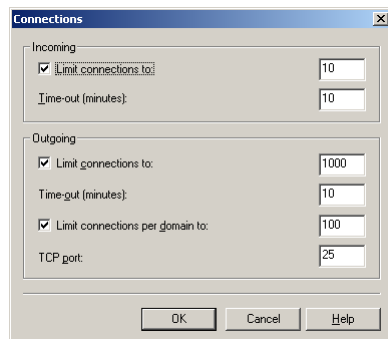
- Open the **Exchange System Manager** and expand the **Connectors** node.
- Right-click **<SMTP Connector name>** and select **Properties**.



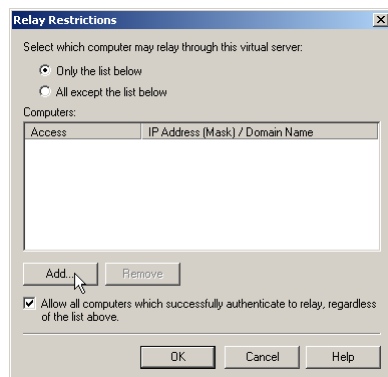
- In the **General** Tab, select **Forward all mail through this connector to the following smart hosts** and enter the IP address of the Policy Patrol machine in square brackets, e.g. [10.0.0.10] as per Figure 5. Click **OK**.

Step 2. Configure the SMTP service to send out mails to the Internet

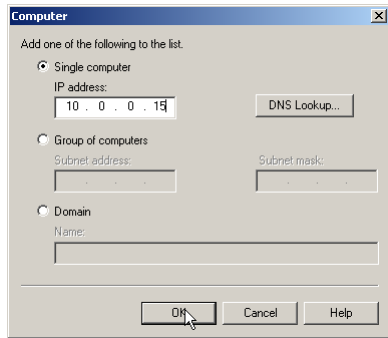
- On the Policy Patrol machine, go to **Start > Settings > Control Panel > Administrative Tools > Internet Services Manager**.
- Right-click **Default SMTP Virtual Server** and select **Properties**.
- In the **General** tab, click on the **Connection** button. Verify that in the 'Outgoing' section, the TCP port is set to 25. Click **OK**.



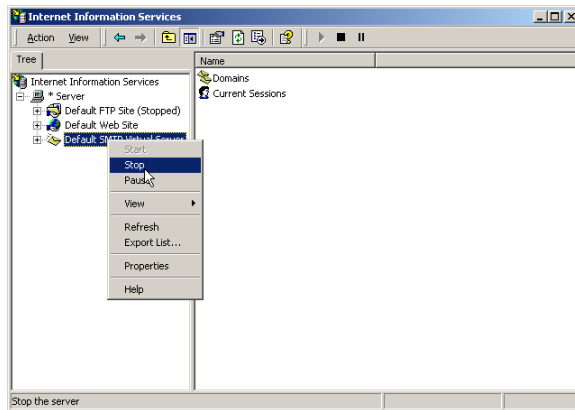
- Go to the **Access** tab and click on the **Relay** button. Select the option **Only the list below** and click on **Add**.



- Enter the internal IP address (can be the same as the external IP address) of the bridgehead server machine in the **Single computer** dialog (in Figure 5 this is 10.0.0.15) and click **OK**. Note: By entering the IP address of the bridgehead server here, you are effectively blocking relaying for all other machines apart from the bridgehead server, therefore ensuring that your relay server cannot be used for spamming.



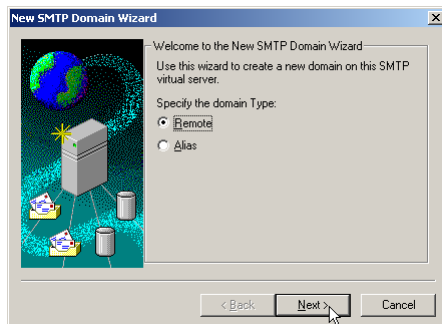
- Right-click **Default SMTP Virtual Server** and choose **Stop**. Then right-click again and choose **Start**.



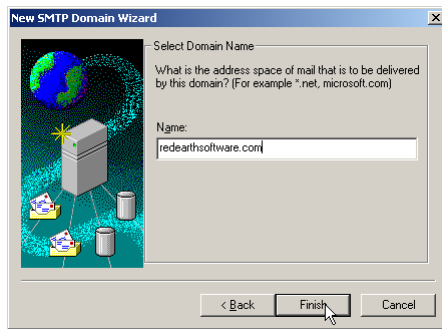
Step 3. Forward NDRs from the SMTP service to the bridgehead server

If the SMTP service cannot deliver a particular message, the Non-delivery messages must be routed back to the bridgehead server. Therefore you must configure the SMTP service to forward messages to the bridgehead server. In this setup, the only messages that will be forwarded are Non-delivery messages.

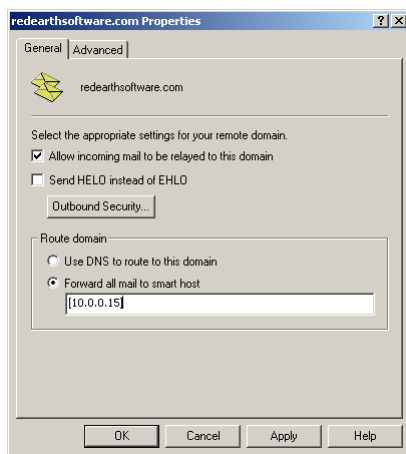
- In the Internet Services Manager, go to **Default SMTP Virtual Server > Domains**.
- Right-click **Domains** and select **New > Domain**.
- The New SMTP Domain Wizard will start up. Select **Remote** and click **Next**.



- Enter the domain name, for instance `reearthsoftware.com`. Click **Finish**.



- Select the newly created domain. Right-click and choose **Properties > General Tab**.



- Tick **Allow incoming mail to be relayed to this domain**. In the 'Route domain' section, select **Forward all mail to smart host** and enter the internal address (can be the same as the external IP address) of the bridgehead server in between square brackets, e.g. `[10.0.0.15]` as per Figure 5. Click **OK**. If you use multiple email domains, repeat step 3 for each Exchange email domain.

You are now ready to start configuring rules in Policy Patrol to filter outbound mails.

Scenario 3: Policy Patrol processes only inbound mail

If you only want Policy Patrol to process inbound mails (for instance to stop spam), you just need to forward incoming mails to the Windows SMTP service on the Policy Patrol machine, as per Figure 6 below. Outgoing mails will continue to be sent out by the bridgehead server. To configure Policy Patrol to process your inbound mails, follow the next steps:

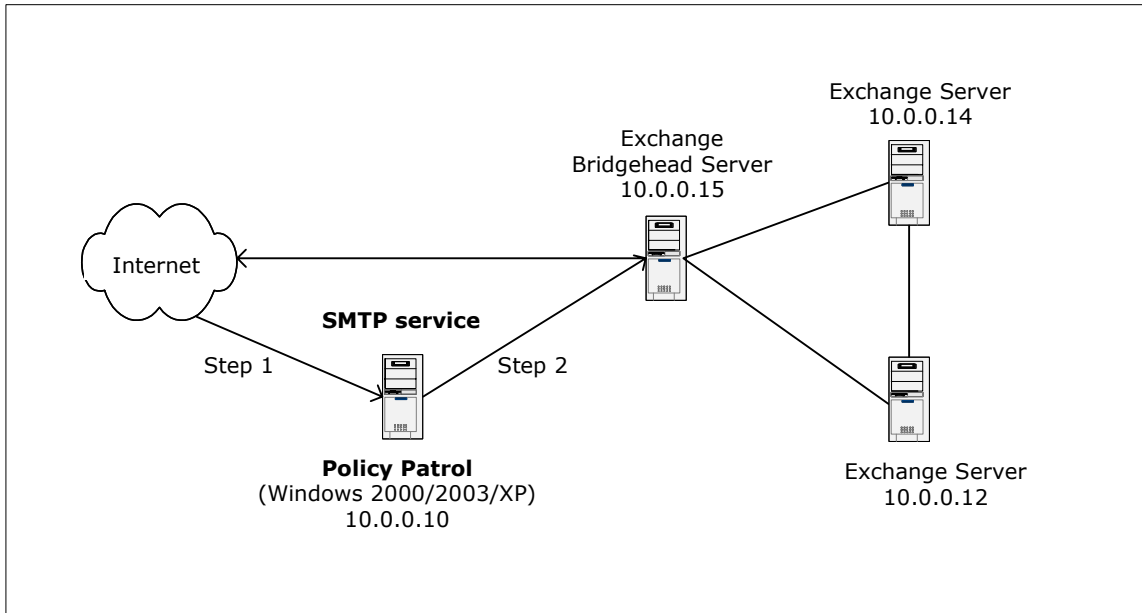
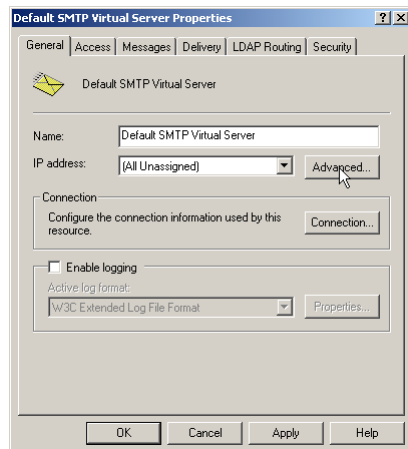


Figure 6 - Policy Patrol processes inbound mail for the Exchange bridgehead server

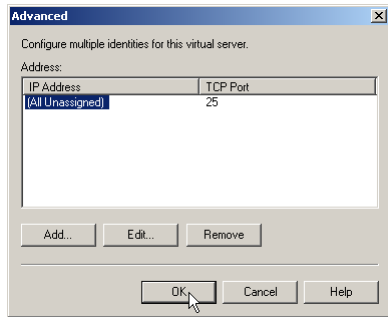
Step 1. Direct incoming mail to the SMTP service on the Policy Patrol machine

Direct your incoming mail to the Windows SMTP service on the Policy Patrol machine (the external DNS servers for your domain must have an mx (mail exchanger) record pointing to the Policy Patrol machine). Furthermore, check the following settings in the Default SMTP Virtual Server:

- On the Policy Patrol machine, go to **Start > Settings > Control Panel > Administrative Tools > Internet Services Manager**.
- Right-click **Default SMTP Virtual Server**, and click **Properties**.
- In the **General** Tab, verify that your IP address is listed as **(All Unassigned)**.

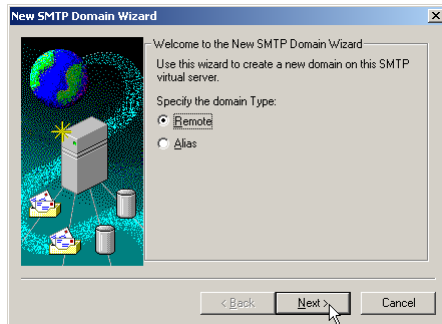


- Click on the **Advanced** button. Verify that the TCP Port is set to 25. Click **OK**.

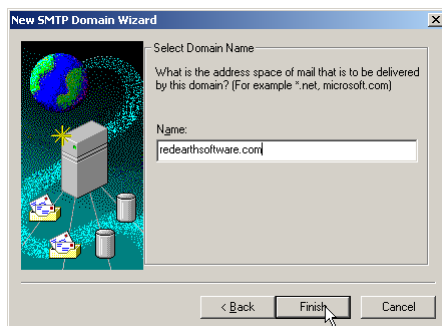


Step 2. Forward mails from the SMTP service to the bridgehead server

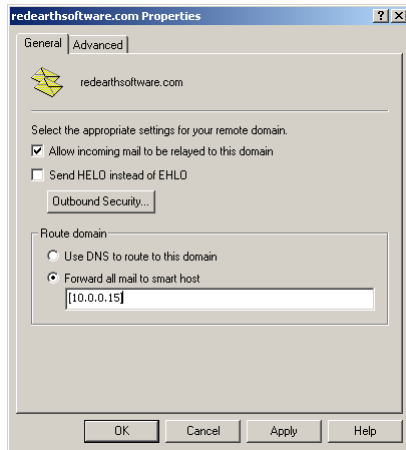
- In the Internet Services Manager, go to **Default SMTP Virtual Server > Domains**.
- Right-click **Domains** and select **New > Domain**.
- The New SMTP Domain Wizard will start up. Select **Remote** and click **Next**.



- Enter the domain name, for instance `reearthsoftware.com`. Click **Finish**.



- Select the newly created domain. Right-click and choose **Properties > General Tab**.



- Tick **Allow incoming mail to be relayed to this domain**. In the 'Route domain' section, select **Forward all mail to smart host** and enter the internal IP address (can be the same as the external IP address) of the bridgehead server in between square brackets, e.g. [10.0.0.15] as per Figure 6. Click **OK**. If you use multiple email domains, repeat step 2 for each email domain.

You are now ready to start configuring rules in Policy Patrol to filter inbound mails.

More information

- ⇒ For more information on how to configure Policy Patrol, please consult the program help or download the product manual from: <http://www.policypatrol.com/docs/policypatrol2manual.pdf>.
- ⇒ If you deploy a Demilitarized Zone (DMZ) and wish to use real-time black lists, please download the following document for further instructions: <http://www.policypatrol.com/docs/Using-Spam-blocker-in-a-DMZ.pdf>.
- ⇒ For more information on relaying your mail through the Windows SMTP service, consult the following Microsoft Knowledge Base article 'XCON: How to set up Windows 2000 as an SMTP Relay Server or Smart Host' at: <http://support.microsoft.com/default.aspx?scid=kb;en-us;293800>.
- ⇒ For more information on how to configure Policy Patrol to stop junk mail, please download the document 'How to filter spam with Policy Patrol' from: <http://www.policypatrol.com/docs/How-to-filter-spam-with-Policy-Patrol.pdf>.
- ⇒ If you still have questions after reading this document, please consult our online knowledge base at <http://www.redearthsoftware.com/kb.asp>, or send an email to support@redearthsoftware.com.

Contacting Red Earth Software

Red Earth Software LLC
200 Marcy Street
Portsmouth, NH 03801
United States
Phone: (603) 436-1319

Fax: (603) 457-8455
Sales: sales@reearthsoftware.com
Support: support@reearthsoftware.com

Red Earth Software (UK) Ltd
20 Market Place
Kingston-upon-Thames
Surrey KT1 1JP
United Kingdom
Tel: +44-(0)20-8605 9074
Fax: +44-(0)20-8605 9075
Sales: sales@reearthsoftware.co.uk
Support: support@reearthsoftware.co.uk

Policy Patrol® is a registered trademark of Red Earth Software®. Copyright © 2001- 2003 by Red Earth Software.